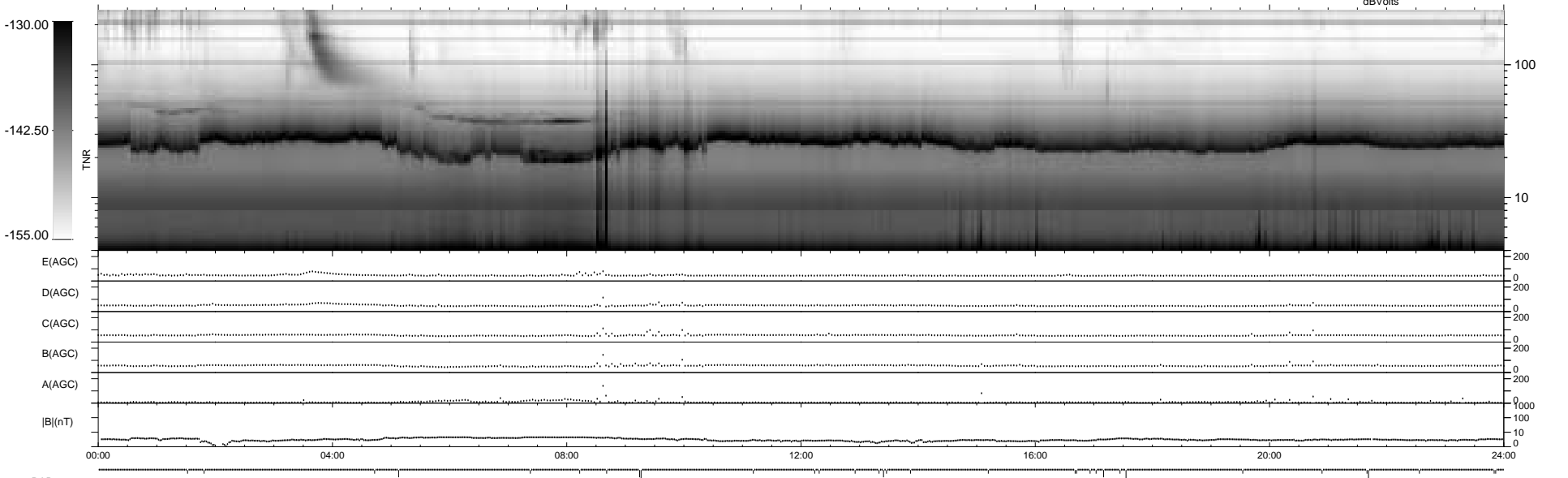
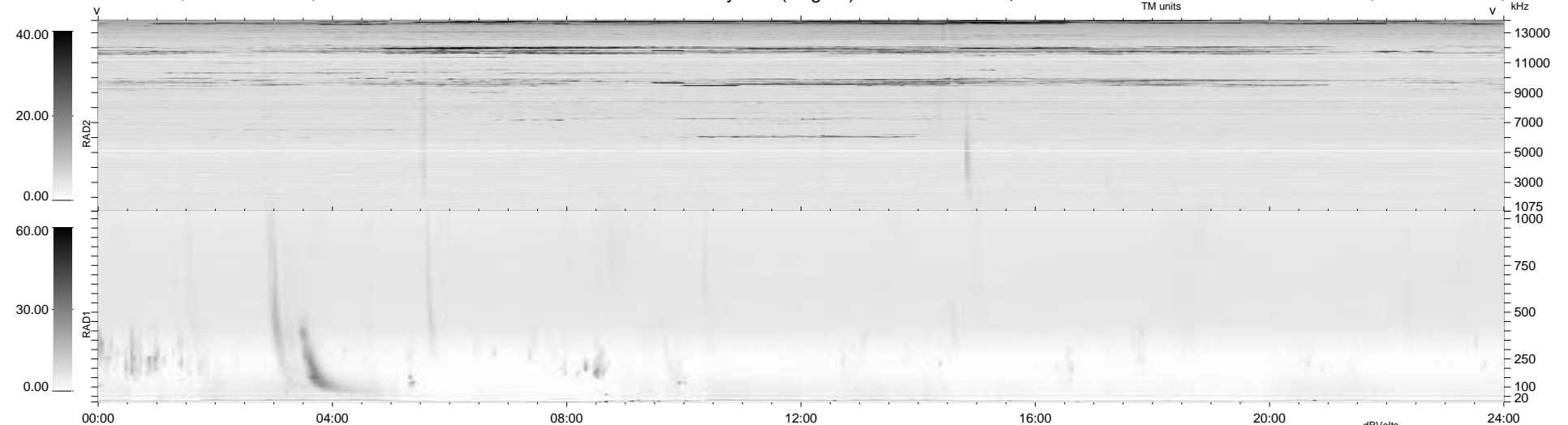


32 bad + 907 good MF/939MF projected (96%) - 0 missing MFs
 Avg interval = 180 secs
 Re = 180.41 (179.69, 6.54, 14.73 GSE)

1.7d VMS-SunOS LZ version = v01
 DAILY Tue Sep 23, 2008
 Re = 177.26 (176.55, 7.51, 13.94 GSE)

WIND/WAVES Summary Plot (Page 1) for 19-MAY-1997, DOY = 139



RAD2
 Antenna Ey
 Mode LIN(1)
 SUM/SEP SUM
 Toggle OFF

RAD1
 Antenna Ex
 Mode LIS(2,3)
 SUM/SEP SUM
 Toggle OFF

TNR
 Antenna ExEy
 Mode A-32
 Sweep ABCDE