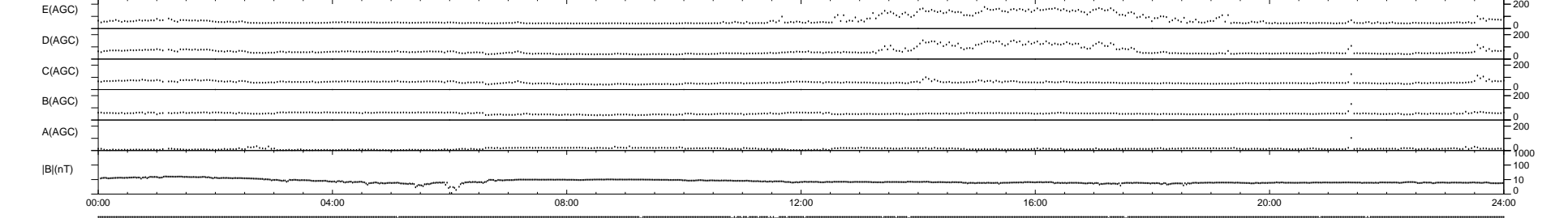
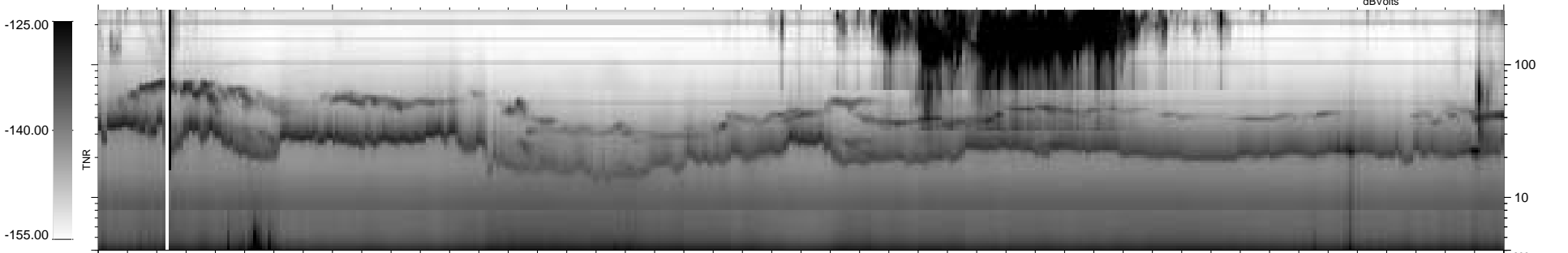
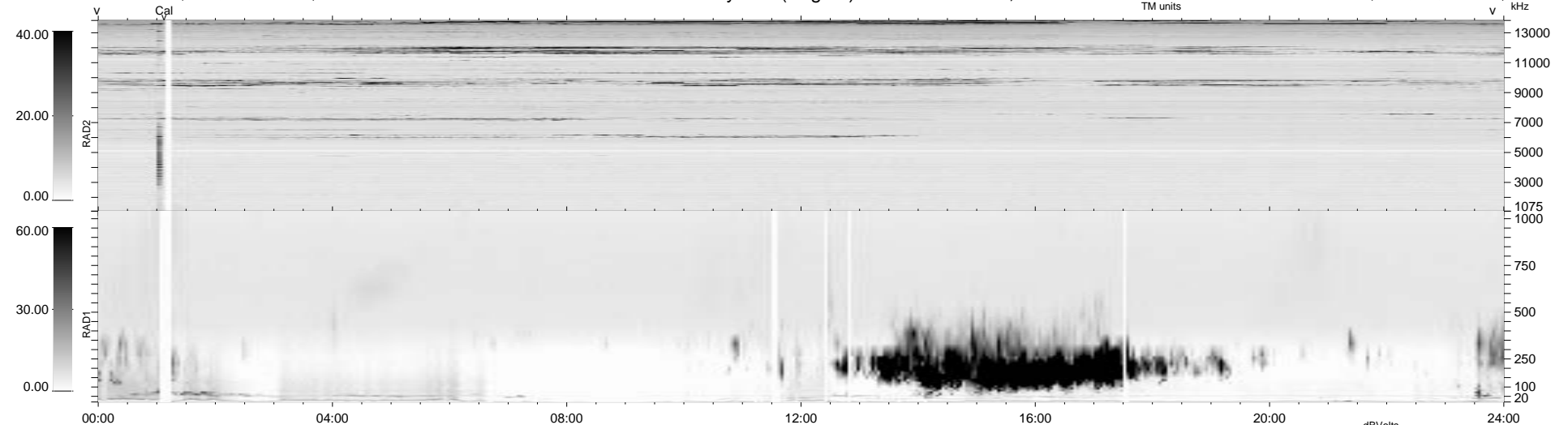


26 bad + 914 good MF/940MF projected (97%) - 0 missing MFs
 Avg interval = 180 secs
 Re = - 189.13 (188.33, 4.00, 16.92 GSE)

1.7d VMS-SunOS LZ version = v01
 DAILY Tue Sep 23, 2008
 Re = 186.37 (185.60, 4.78, 16.23 GSE)

WIND/WAVES Summary Plot (Page 1) for 16-MAY-1997, DOY = 136



RAD2
 Antenna Ey
 Mode LIN(1)
 SUM/SEP SUM
 Toggle OFF
 RAD1
 Antenna Ex
 Mode LIS(2,3)
 SUM/SEP SUM
 Toggle OFF
 TNR
 Antenna ExEy
 Mode A-32
 Sweep ABCDE