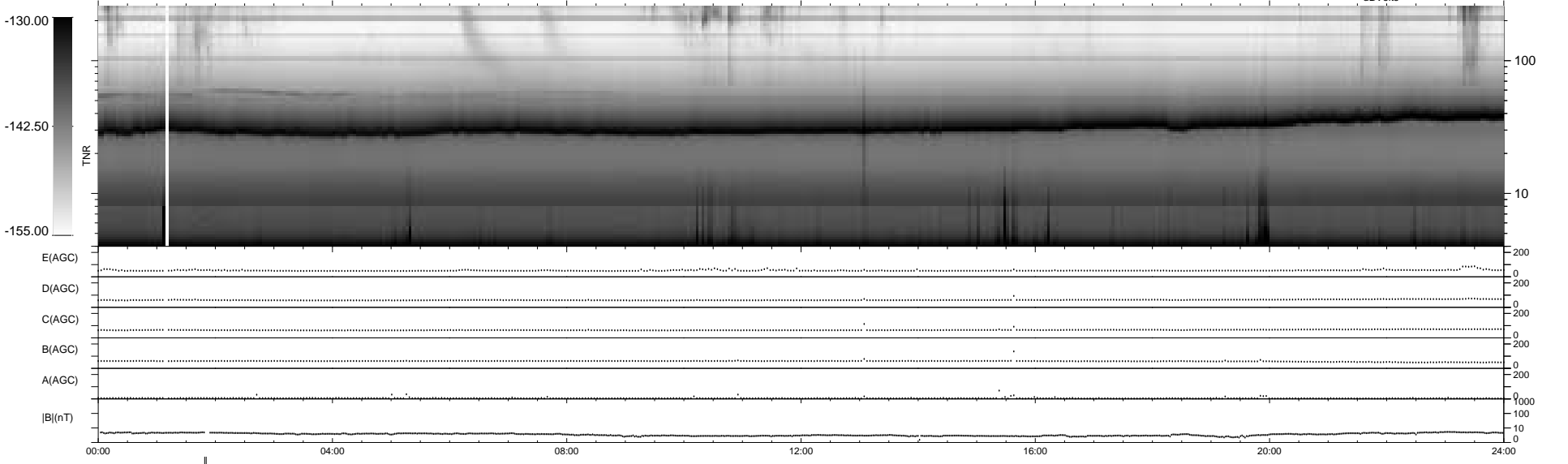
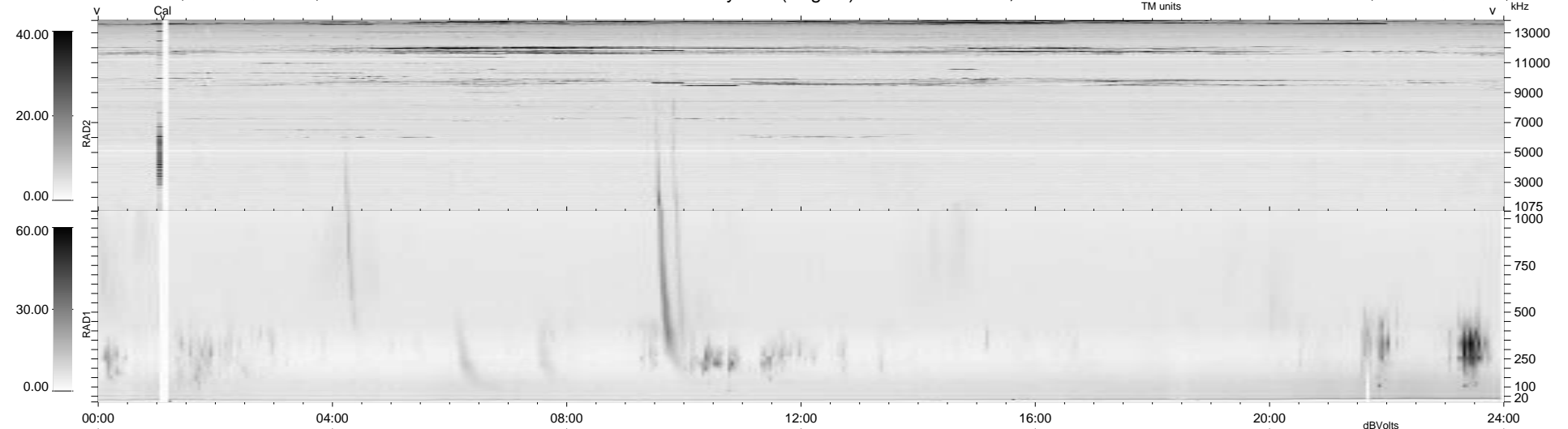


15 bad + 922 good MF/939MF projected (98%) - 2 missing MFs  
 Avg interval = 180 secs  
 Re = 207.15 (206.02, -0.58, 21.58 GSE)

1.7d VMS-SunOS LZ version = v01  
 DAILY Tue Sep 23, 2008  
 Re = 205.32 (204.24, -0.17, 21.11 GSE)

WIND/WAVES Summary Plot (Page 1) for 08-MAY-1997, DOY = 128



RAD2  
 Antenna Ey  
 Mode LIN(1)  
 SUM/SEP SUM  
 Toggle OFF

RAD1  
 Antenna Ex  
 Mode LIS(2,3)  
 SUM/SEP SUM  
 Toggle OFF

TNR  
 Antenna ExEy  
 Mode A-32  
 Sweep ABCDE