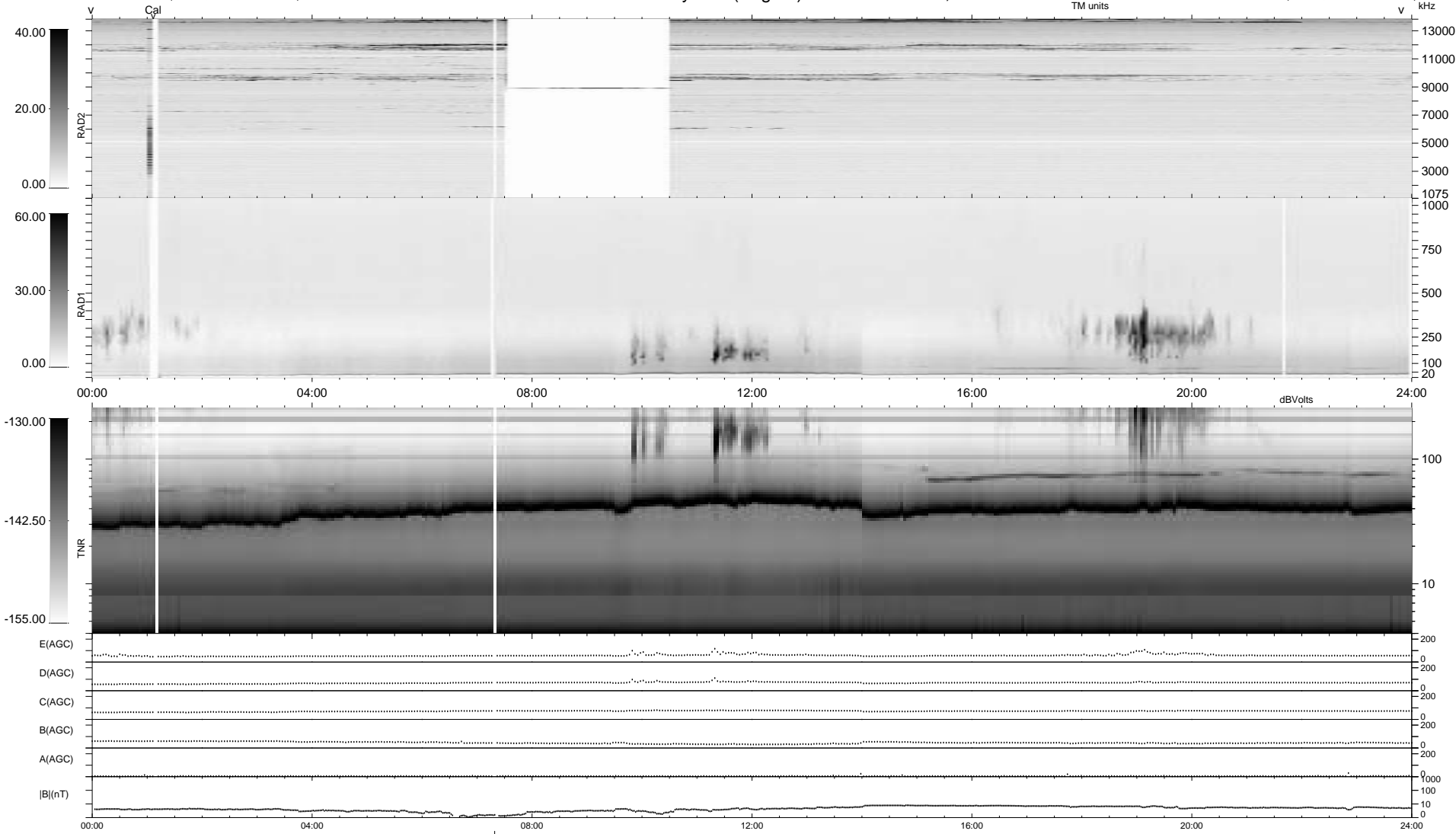


10 bad + 928 good MF/939MF projected (98%) - 1 missing MF  
 Avg interval = 180 secs  
 Re = 219.73 (218.36, -1.14, 24.44 GSE)

1.7d VMS-SunOS LZ version = v01  
 DAILY Tue Sep 23, 2008  
 Re = 218.83 (217.47, -1.42, 24.32 GSE)

WIND/WAVES Summary Plot (Page 1) for 28-APR-1997, DOY = 118



RAD2 Antenna Ey .....  
 Mode LIN(1) .....  
 SUM/SEP SUM .....  
 Toggle OFF .....  
 RAD1 Antenna Ex .....  
 Mode LIS(2,3) .....  
 SUM/SEP SUM .....  
 Toggle OFF .....  
 TNR Antenna ExEy .....  
 Mode A-32 .....  
 Sweep ABCDE .....