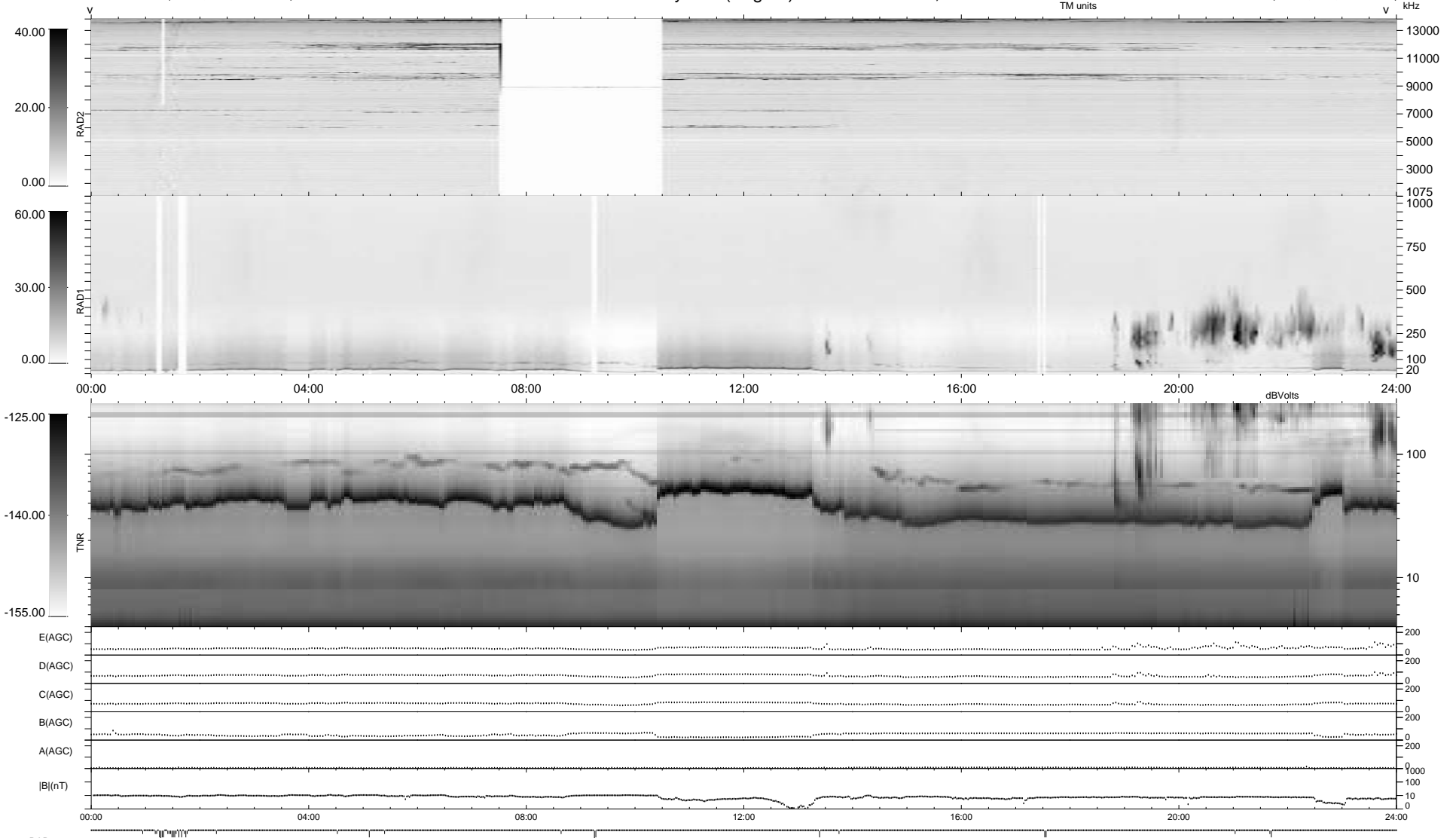


33 bad + 907 good MF/940MF projected (96%) - 0 missing MFs  
 Avg interval = 180 secs  
 Re = 223.74 (222.39, 1.13, 24.51 GSE)

1.7d VMS-SunOS LZ version = v01  
 DAILY Tue Sep 23, 2008  
 Re = 222.99 (221.63, 0.59, 24.57 GSE)

### WIND/WAVES Summary Plot (Page 1) for 23-APR-1997, DOY = 113



```

RAD2
Antenna Ey .....
Mode LIN(1) .....
SUM/SEP SUM .....
Toggle OFF .....

RAD1
Antenna Ex .....
Mode LIS(2,3) .....
SUM/SEP SUM .....
Toggle OFF .....

TNR
Antenna ExEy .....
Mode A-32 .....
Sweep ABCDE .....
  
```