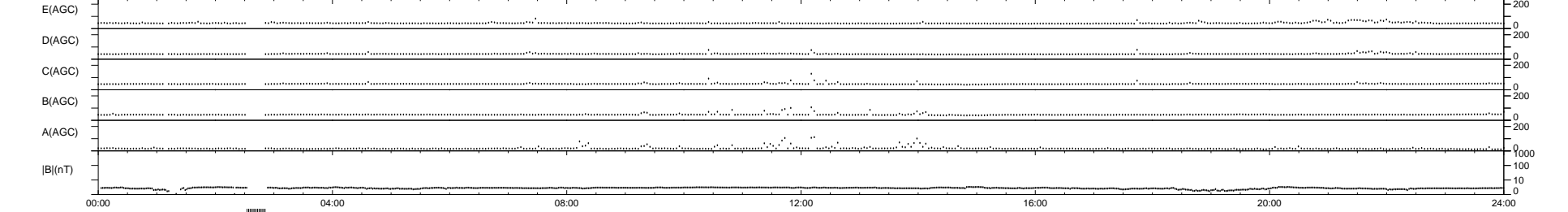
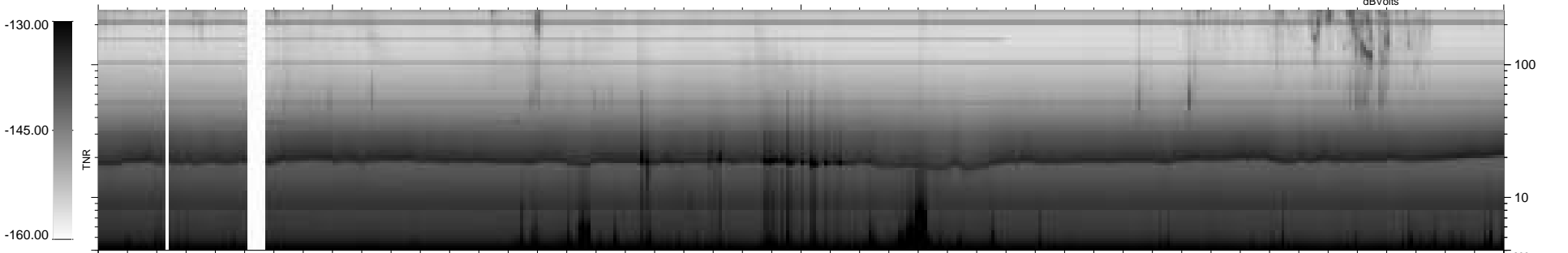
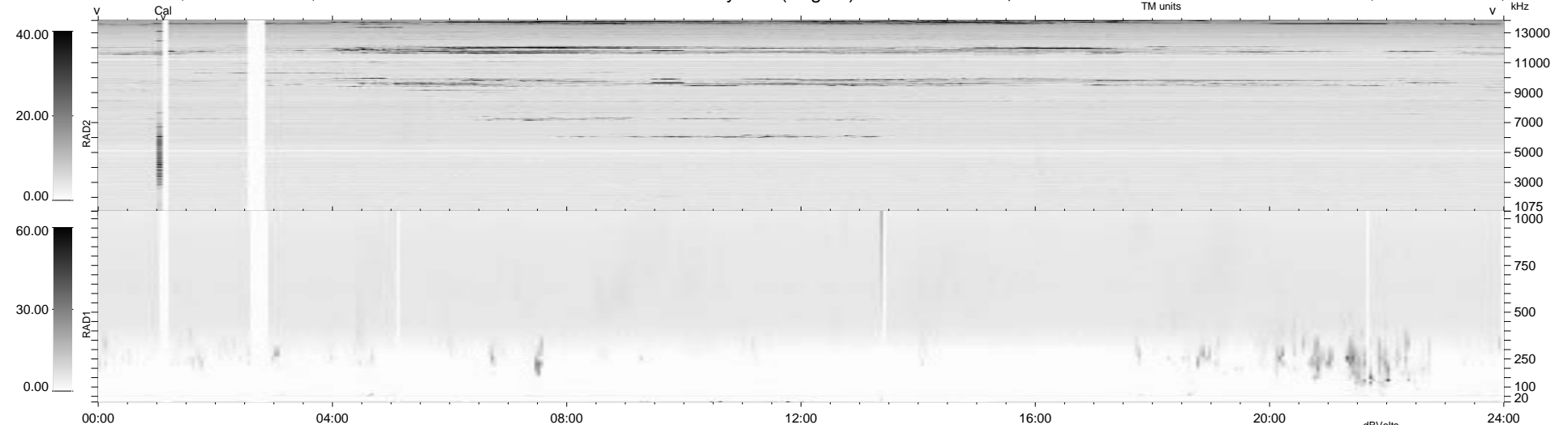


24 bad + 902 good MF/939MF projected (96%) - 13 missing MFs
 Avg interval = 180 secs
 Re = - 225.89 (224.58, 2.89, 24.13 GSE)

1.7d VMS-SunOS LZ version = v01
 DAILY Tue Sep 23, 2008
 Re = 225.20 (223.87, 2.29, 24.29 GSE)

WIND/WAVES Summary Plot (Page 1) for 20-APR-1997, DOY = 110



```

RAD2
Antenna Ey
Mode LIN(1)
SUM/SEP SUM
Toggle OFF

RAD1
Antenna Ex
Mode LIS(2.8)
SUM/SEP SUM
Toggle OFF

TNR
Antenna ExEy
Mode A-32
Sweep ABCDE
  
```