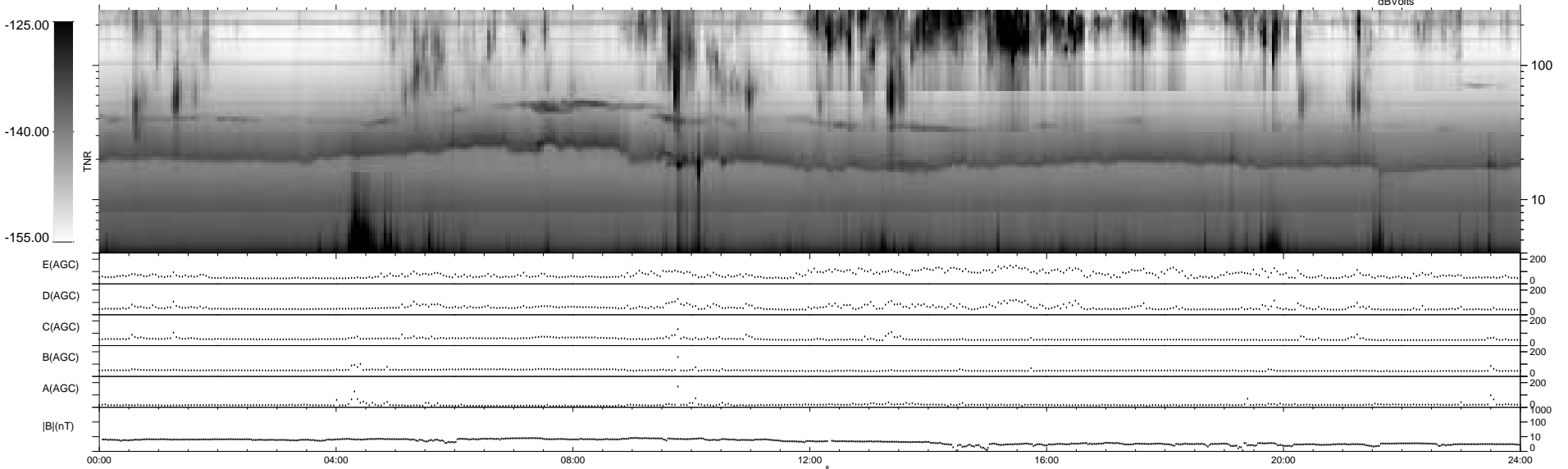
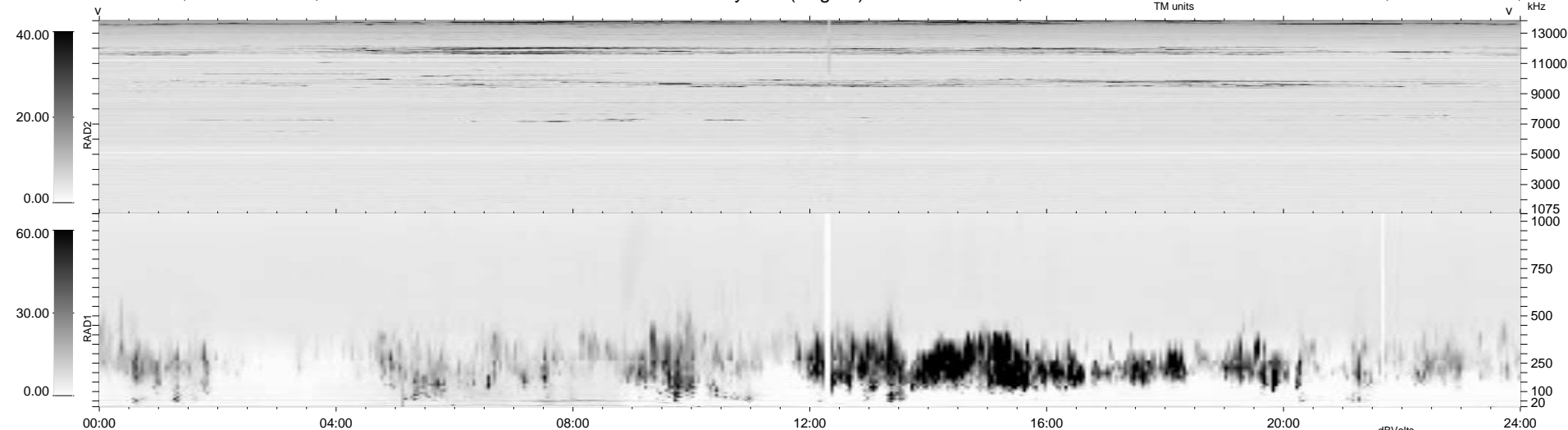


9 bad + 928 good MF/939MF projected (98%) - 2 missing MFs
 Avg interval = 180 secs
 Re = - 226.57 (225.28, 3.49, 23.94 GSE)

1.7d VMS-SunOS LZ version = v01

WIND/WAVES Summary Plot (Page 1) for 19-APR-1997, DOY = 109

DAILY Tue Sep 23, 2008
 Re = 225.90 (224.58, 2.89, 24.13 GSE)



RAD2
 Antenna Ey
 Mode LIN(1)
 SUM/SEP SUM
 Toggle OFF

RAD1
 Antenna Ex
 Mode LIS(2,3)
 SUM/SEP SUM
 Toggle OFF

TNR
 Antenna ExEy
 Mode A-32
 Sweep ABCDE