

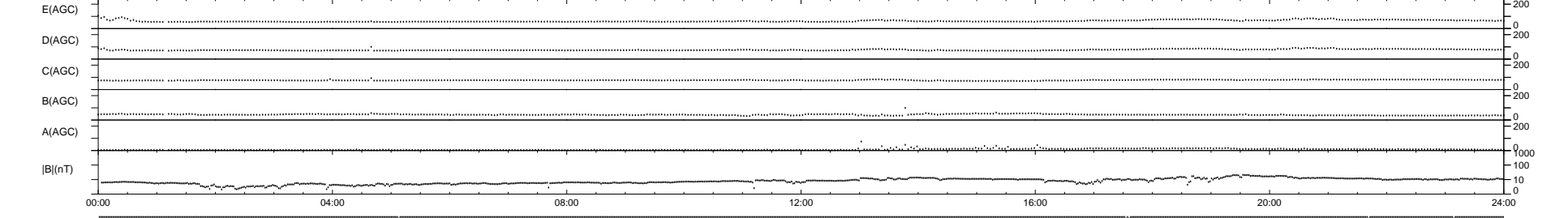
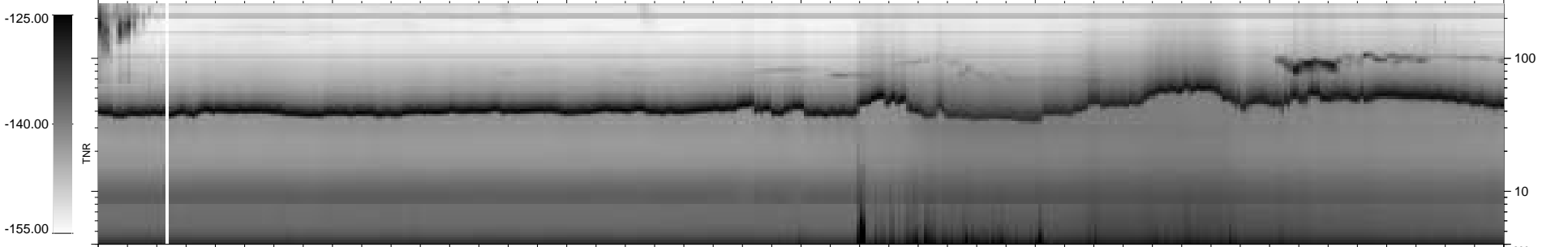
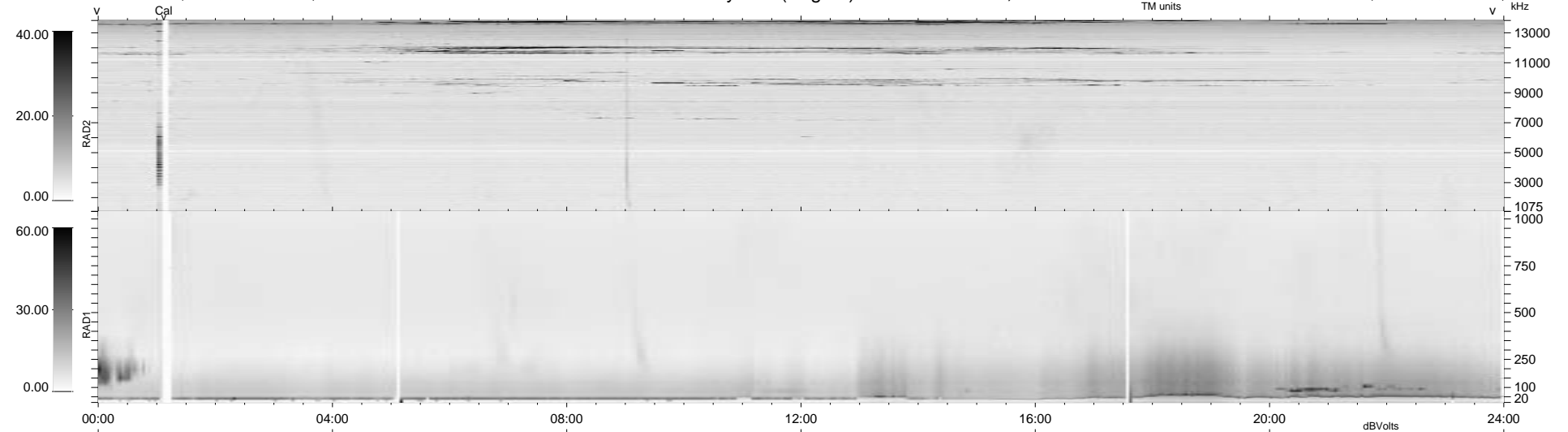
5 bad + 934 good MF/939MF projected (99%) - 0 missing MFs
 Avg interval = 180 secs
 Re = -231.30 (230.20, 8.35, 20.99 GSE)

1.7d VMS-SunOS

LZ version = v02

WIND/WAVES Summary Plot (Page 1) for 10-APR-1997, DOY = 100

DAILY Tue Sep 23, 2008
 Re = 230.96 (229.83, 7.90, 21.41 GSE)



```

RAD2
Antenna Ey
Mode LIN(1)
SUM/SEP SUM
Toggle OFF

RAD1
Antenna Ex
Mode LIS(0.2)
SUM/SEP SUM
Toggle OFF

TNR
Antenna ExEy
Mode A-32
Sweep ABCDE
  
```