

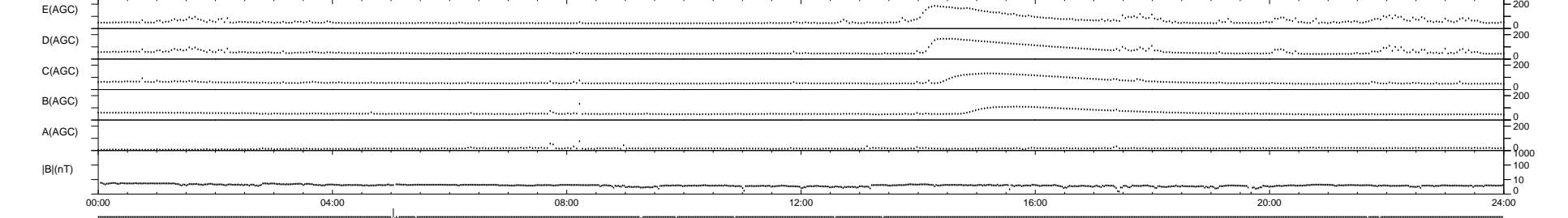
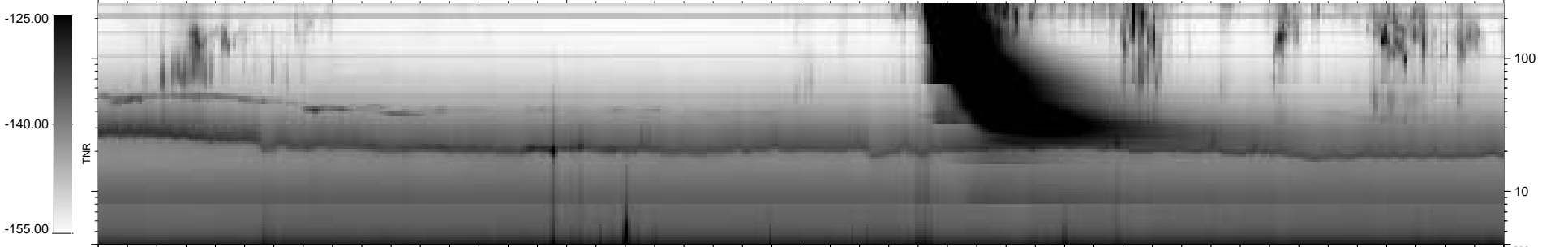
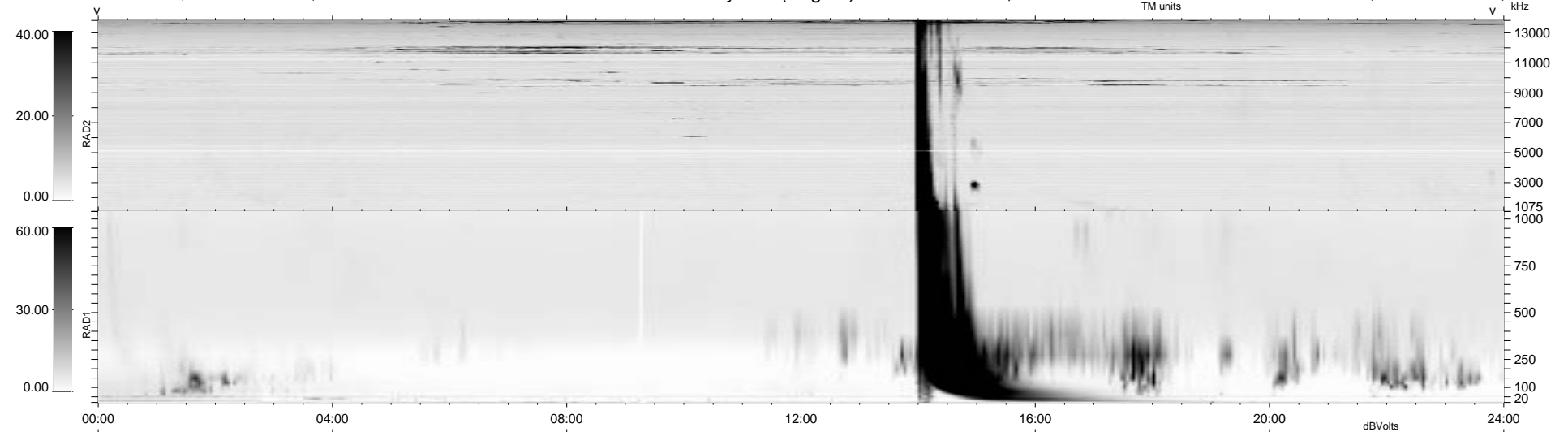
12 bad + 926 good MF/939MF projected (98%) - 1 missing MF
 Avg interval = 180 secs
 Re = - 231.95 (230.93, 9.67, 19.56 GSE)

1.7d VMS-SunOS

LZ version = v02

WIND/WAVES Summary Plot (Page 1) for 07-APR-1997, DOY = 97

DAILY Mon Sep 22, 2008
 Re = 231.81 (230.75, 9.24, 20.05 GSE)



```

RAD2
Antenna Ey .....
Mode LIN(1) .....
SUM/SEP SUM .....
Toggle OFF .....

RAD1
Antenna Ex .....
Mode LIS(0.2) .....
SUM/SEP SUM .....
Toggle OFF .....

TNR
Antenna ExEy .....
Mode A-32 .....
Sweep ABCDE .....
  
```