

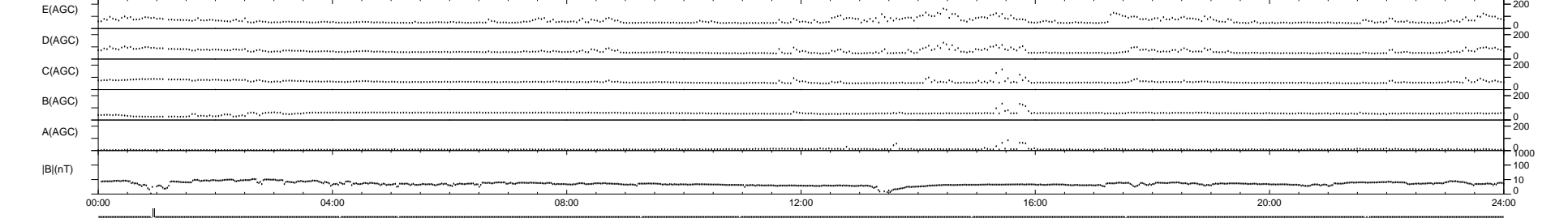
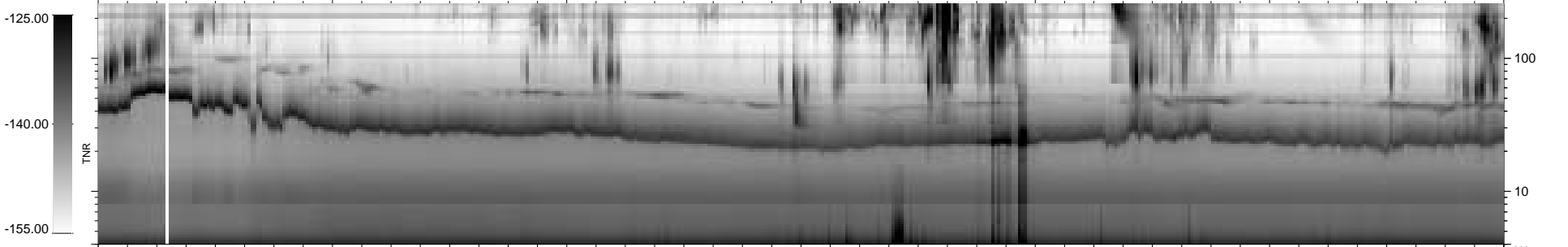
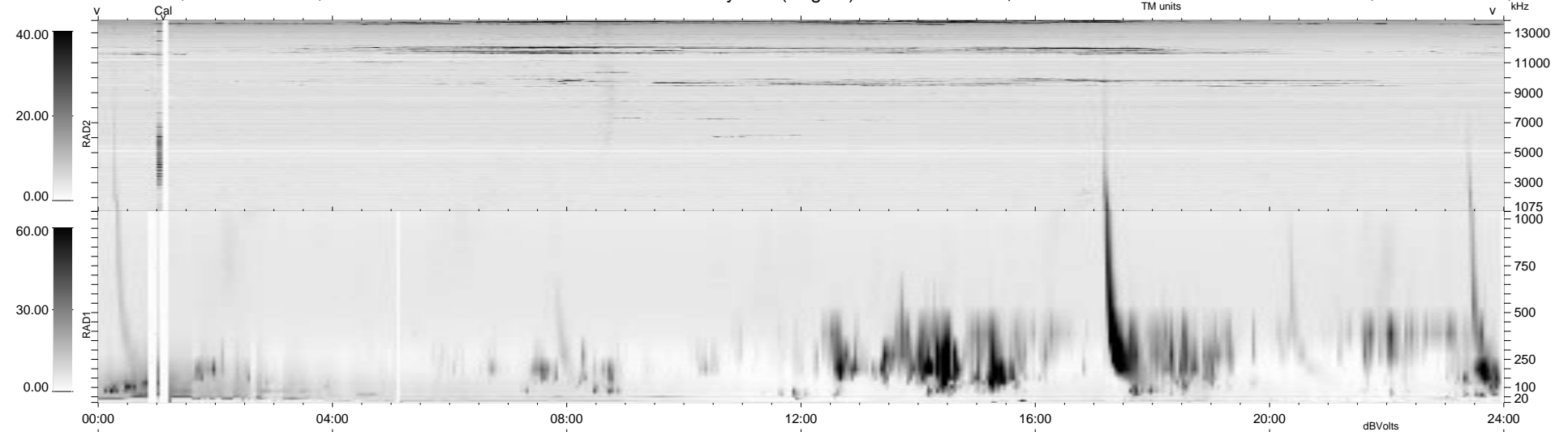
9 bad + 928 good MF/939MF projected (98%) - 2 missing MFs
 Avg interval = 180 secs
 Re = 232.01 (231.06, 11.00, 17.92 GSE)

1.7d VMS-SunOS

LZ version = v01

WIND/WAVES Summary Plot (Page 1) for 04-APR-1997, DOY = 94

DAILY Mon Sep 22, 2008
 Re = 232.05 (231.07, 10.55, 18.49 GSE)



RAD2
 Antenna Ey
 Mode LIN(1)
 SUM/SEP SUM
 Toggle OFF
 RAD1
 Antenna Ex
 Mode LIS(0.2)
 SUM/SEP SUM
 Toggle OFF
 TNR
 Antenna ExEy
 Mode A-32
 Sweep ABCDE