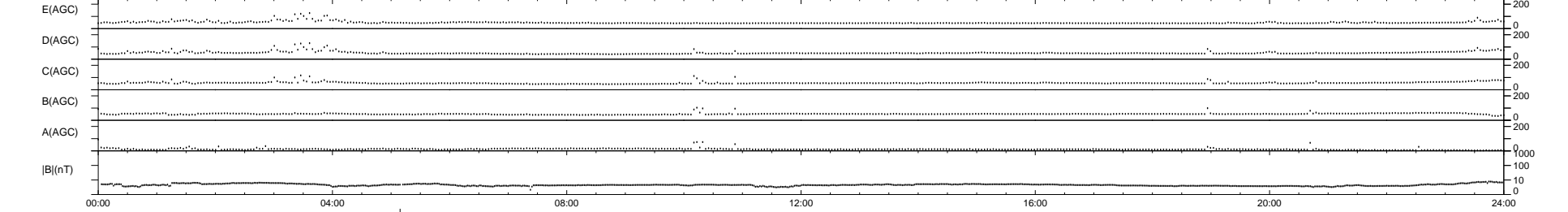
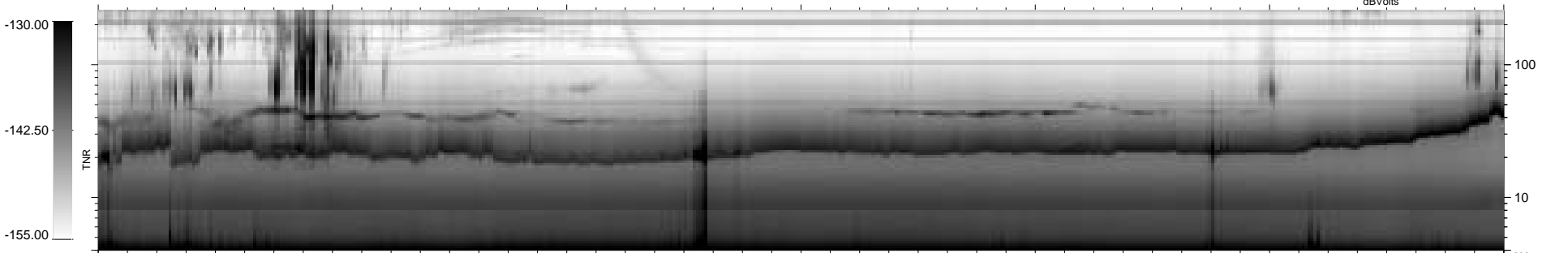
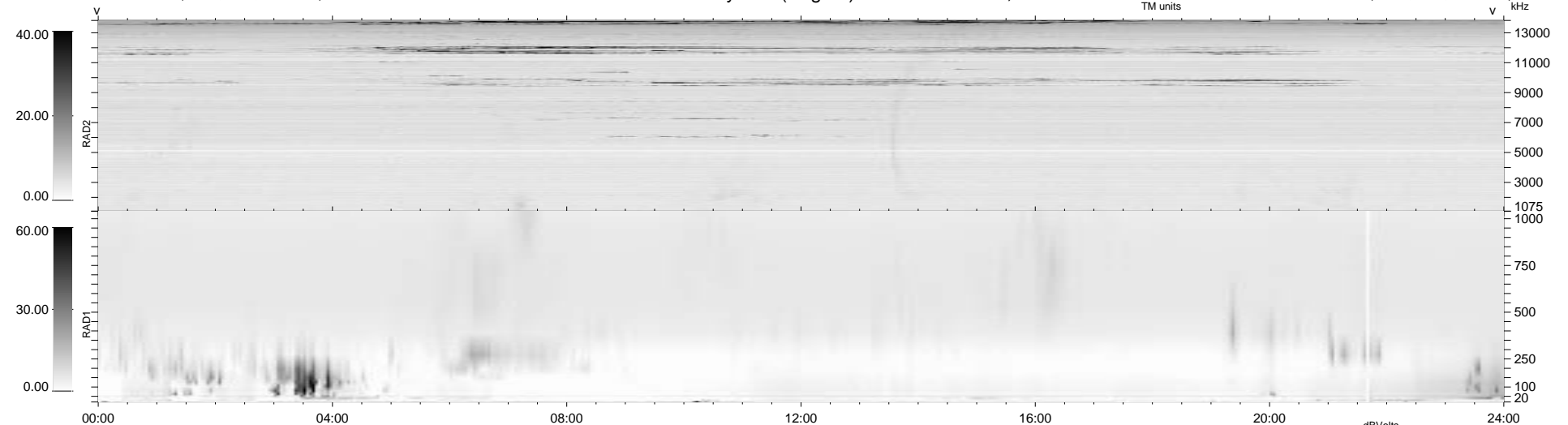


10 bad + 928 good MF/939MF projected (98%) - 1 missing MF
 Avg interval = 180 secs
 Re = - 231.92 (230.98, 11.48, 17.32 GSE)

1.7d VMS-SunOS LZ version = v01
 DAILY Mon Sep 22, 2008
 Re = 232.01 (231.06, 11.00, 17.92 GSE)

WIND/WAVES Summary Plot (Page 1) for 03-APR-1997, DOY = 93



RAD2
 Antenna Ey
 Mode LIN(1)
 SUM/SEP SUM
 Toggle OFF

RAD1
 Antenna Ex
 Mode LIS(0.2)
 SUM/SEP SUM
 Toggle OFF

TNR
 Antenna ExEy
 Mode A-32
 Sweep ABCDE