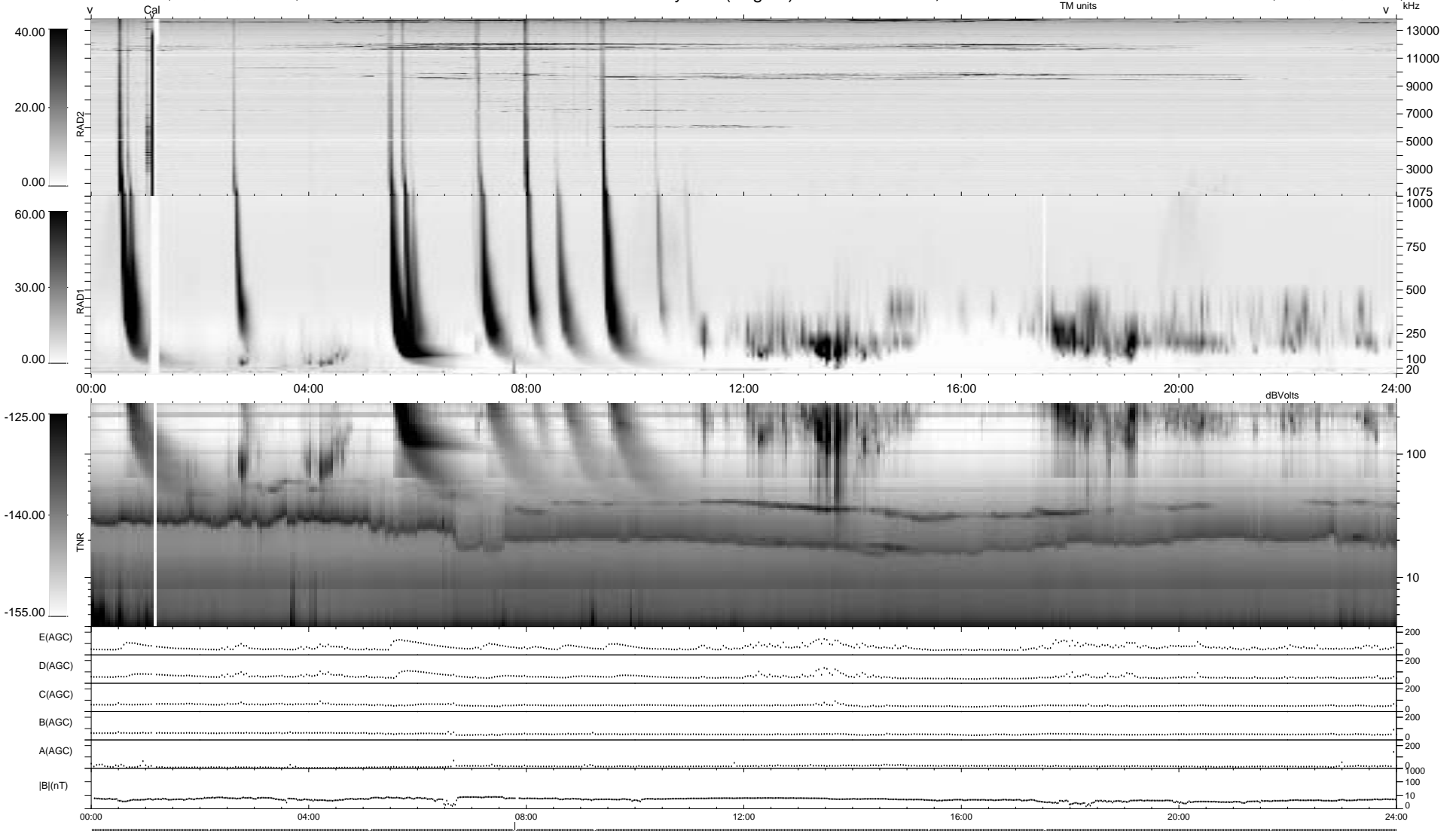


11 bad + 927 good MF/939MF projected (98%) - 1 missing MF  
 Avg interval = 180 secs  
 Re = -231.78 (230.86, 11.99, 16.71 GSE)

1.7d VMS-SunOS LZ version = v01  
 DAILY Mon Sep 22, 2008  
 Re = 231.92 (230.98, 11.49, 17.32 GSE)

WIND/WAVES Summary Plot (Page 1) for 02-APR-1997, DOY = 92



```

RAD2
Antenna Ey .....
Mode LIN(1) .....
SUM/SEP SUM .....
Toggle OFF .....

RAD1
Antenna Ex .....
Mode LIS(0.2) .....
SUM/SEP SUM .....
Toggle OFF .....

TNR
Antenna ExEy .....
Mode A-32 .....
Sweep ABCDE .....
  
```