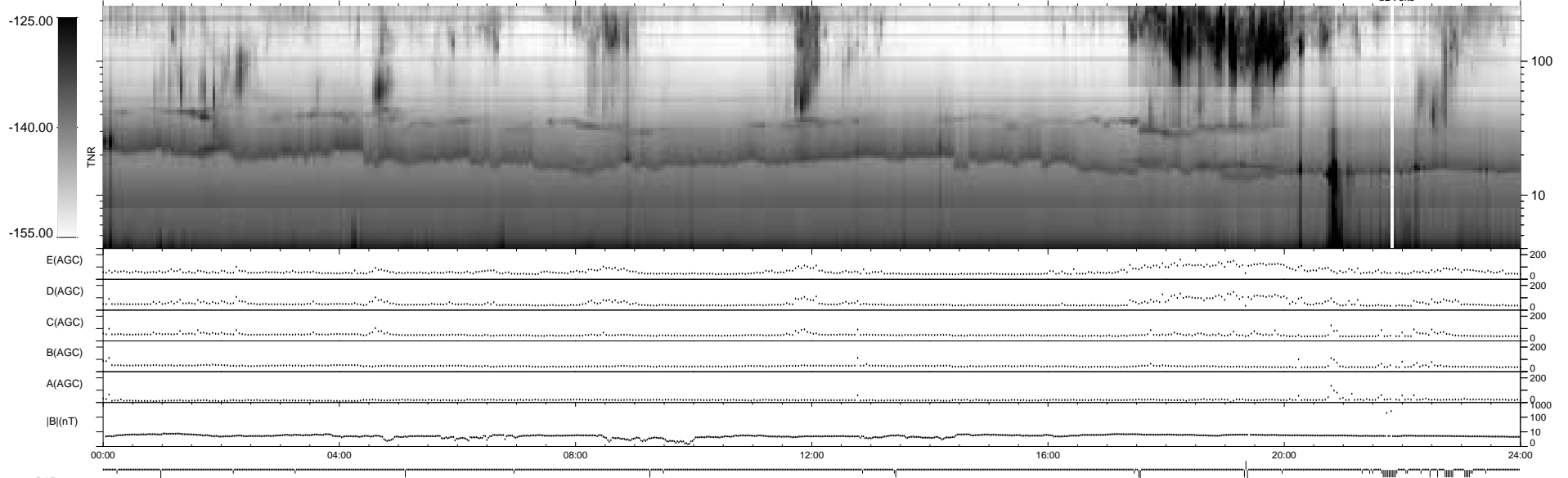
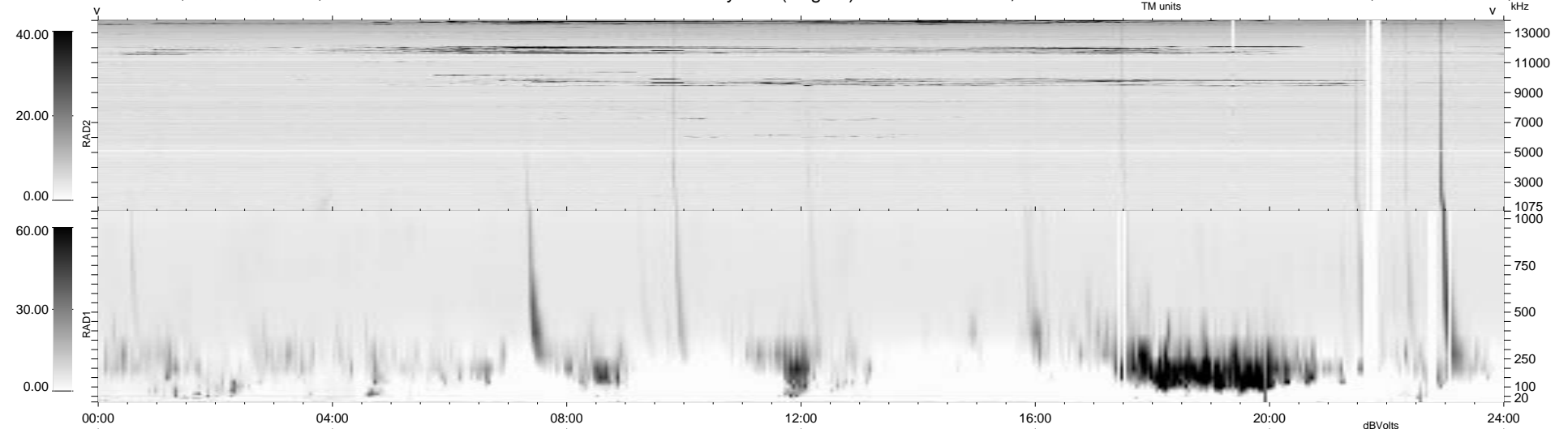


49 bad + 889 good MF/939MF projected (94%) - 1 missing MF  
 Avg interval = 180 secs  
 Re = - 231.19 (230.32, 13.65, 14.71 GSE)

1.7d VMS-SunOS LZ version = v01  
 DAILY Mon Sep 22, 2008  
 Re = 231.41 (230.52, 13.07, 15.39 GSE)

WIND/WAVES Summary Plot (Page 1) for 30-MAR-1997, DOY = 89



RAD2  
 Antenna Ey  
 Mode LIN(1)  
 SUM/SEP SUM  
 Toggle OFF

RAD1  
 Antenna Ex  
 Mode LIS(0.2)  
 SUM/SEP SUM  
 Toggle OFF

TNR  
 Antenna ExEy  
 Mode A-32  
 Sweep ABCDE