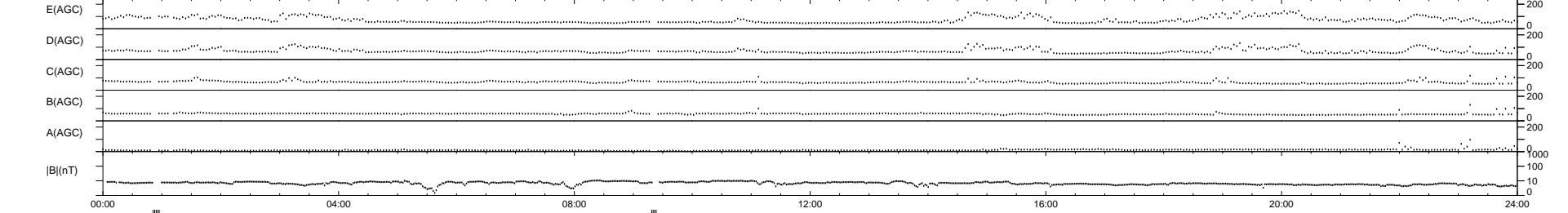
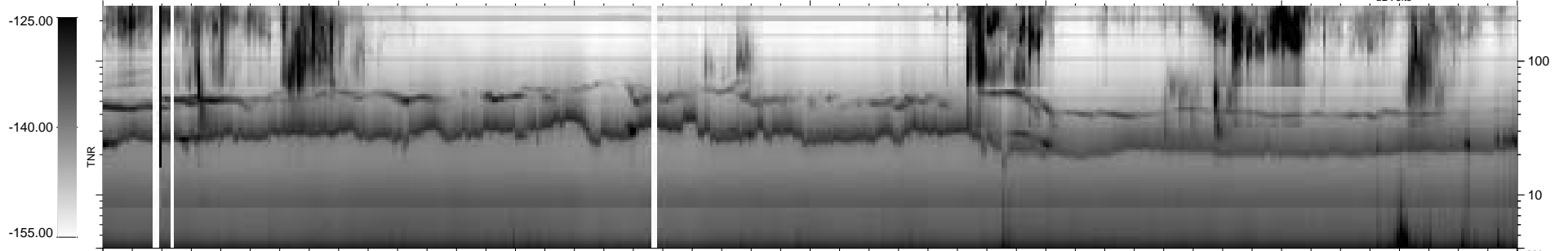
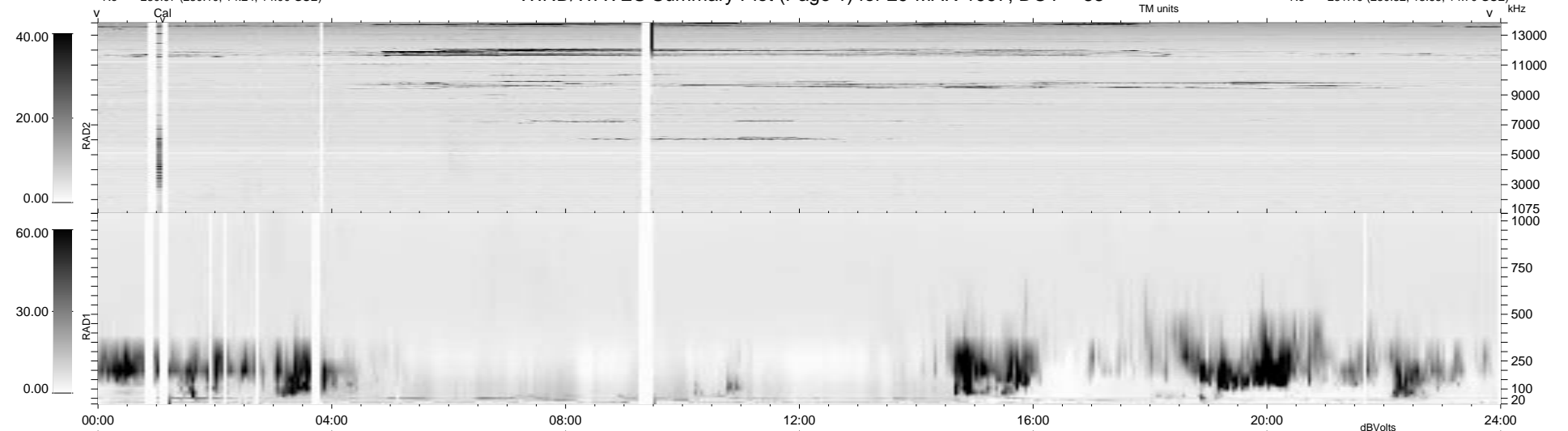


47 bad + 883 good MF/939MF projected (94%) - 9 missing MFs
 Avg interval = 180 secs
 Re = -230.97 (230.10, 14.24, 14.00 GSE)

1.7d VMS-SunOS LZ version = v01

WIND/WAVES Summary Plot (Page 1) for 29-MAR-1997, DOY = 88

DAILY Mon Sep 22, 2008
 Re = 231.19 (230.32, 13.65, 14.70 GSE)



```

RAD2
Antenna Ey .....
Mode LIN(1) .....
SUM/SEP SUM .....
Toggle OFF .....

RAD1
Antenna Ex .....
Mode LIS(0.2) .....
SUM/SEP SUM .....
Toggle OFF .....

TNR
Antenna ExEy .....
Mode A-32 .....
Sweep ABCDE .....
  
```