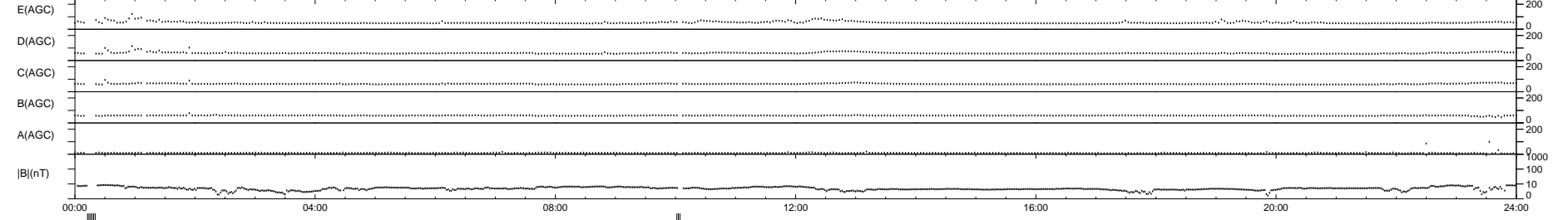
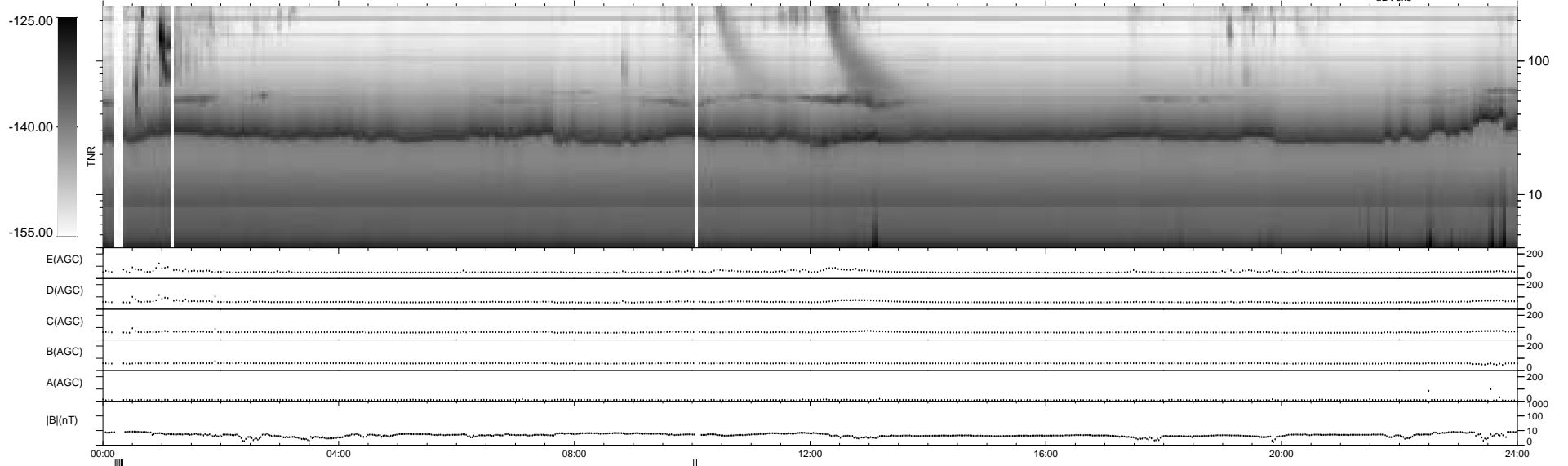
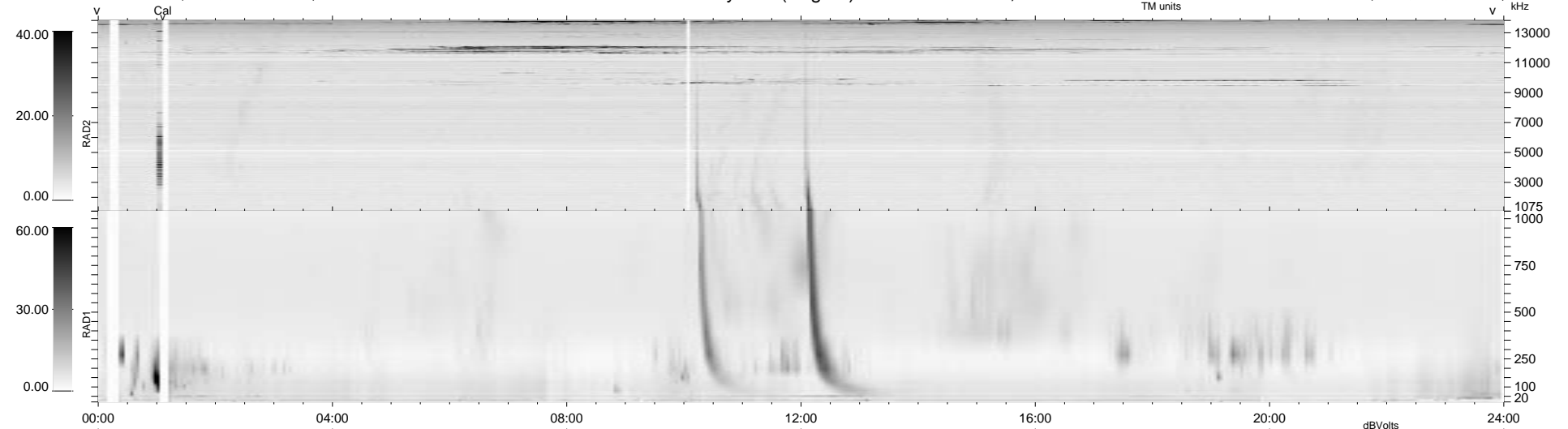


15 bad + 915 good MF/939MF projected (97%) - 9 missing MFs
 Avg interval = 180 secs
 Re = 227.90 (226.94, 20.73, 2.58 GSE)

1.7d VMS-SunOS LZ version = v01
 DAILY Mon Sep 22, 2008
 Re = 228.16 (227.21, 20.56, 3.43 GSE)

WIND/WAVES Summary Plot (Page 1) for 15-MAR-1997, DOY = 74



RAD2
 Antenna Ey
 Mode LIN(1)
 SUM/SEP SUM
 Toggle OFF

RAD1
 Antenna Ex
 Mode LIS(0.2)
 SUM/SEP SUM
 Toggle OFF

TNR
 Antenna ExEy
 Mode A-32
 Sweep ABCDE