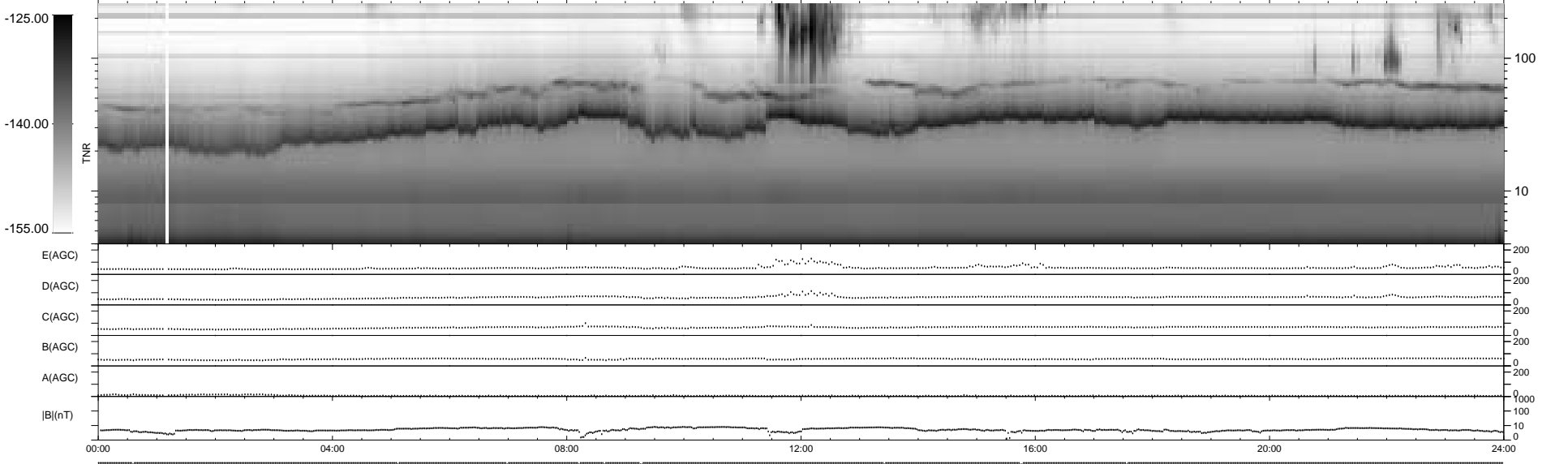
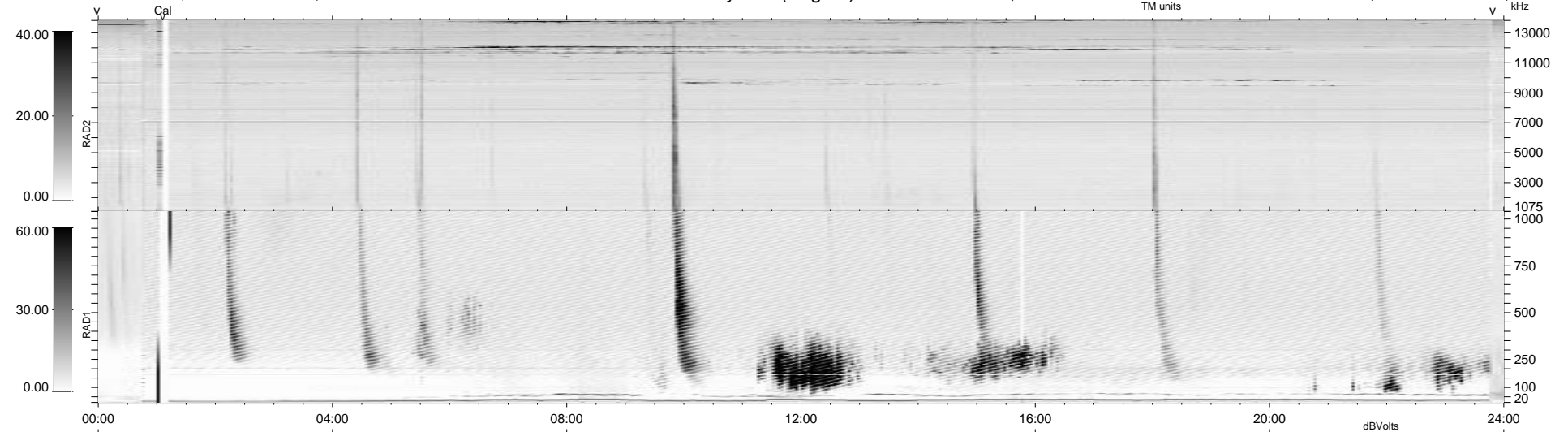


11 bad + 928 good MF/939MF projected (98%) - 0 missing MFs
 Avg interval = 180 secs
 Re = 224.16 (223.22, 19.99, -4.24 GSE)

1.7d VMS-SunOS LZ version = v01
 DAILY Mon Sep 22, 2008
 Re = 224.82 (223.88, 20.24, -3.40 GSE)

WIND/WAVES Summary Plot (Page 1) for 07-MAR-1997, DOY = 66



E(AGC) 200
 D(AGC) 200
 C(AGC) 200
 B(AGC) 200
 A(AGC) 200
 |B|(nT) 1000
 100
 10
 0

00:00 04:00 08:00 12:00 16:00 20:00 24:00

```

RAD2
Antenna Ey .....
Mode LIN(1) .....
SUM/SEP SUM ..... SUM
Toggle OFF .....

RAD1
Antenna Ex .....
Mode LIS(0.2) ..... LIS(0.2)
SUM/SEP SUM ..... SUM
Toggle OFF .....

TNR
Antenna ExEy .....
Mode A-32 .....
Sweep ABCDE .....
  
```