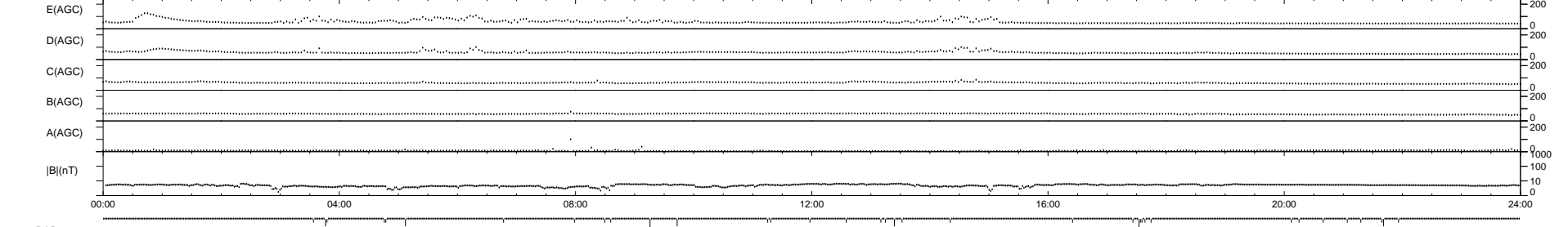
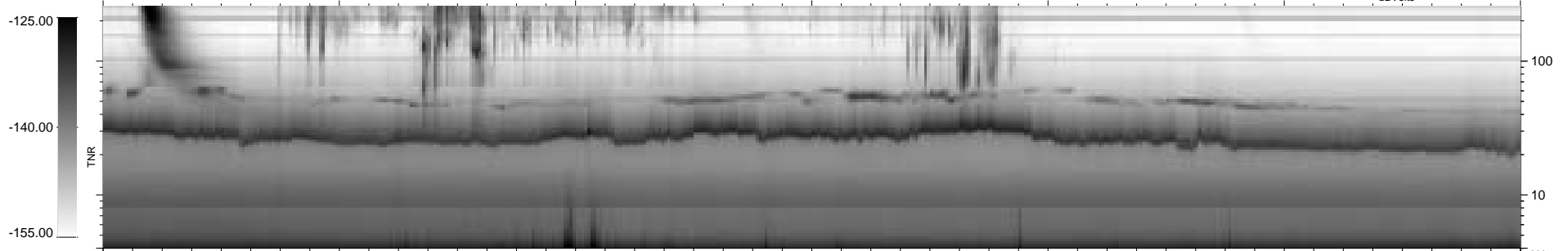
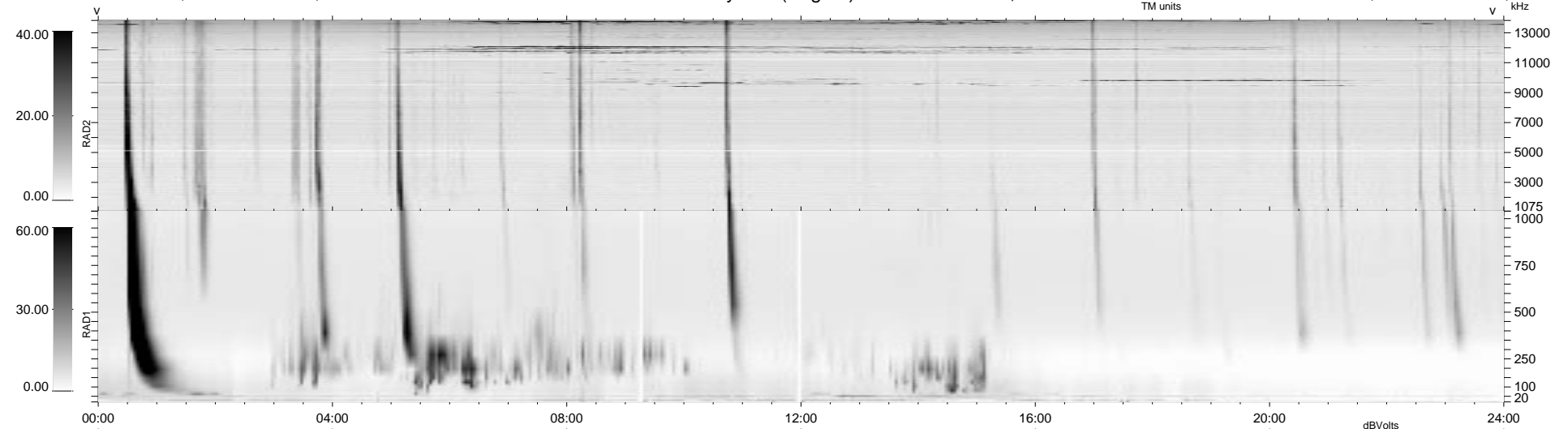


36 bad + 903 good MF/939MF projected (96%) - 0 missing MFs
 Avg interval = 180 secs
 Re = 223.44 (222.50, 19.72, -5.08 GSE)

1.7d VMS-SunOS LZ version = v01
 DAILY Mon Sep 22, 2008
 Re = 224.15 (223.22, 19.99, -4.25 GSE)

WIND/WAVES Summary Plot (Page 1) for 06-MAR-1997, DOY = 65



RAD2
 Antenna Ey
 Mode LIN(1)
 SUM/SEP SUM
 Toggle OFF

RAD1
 Antenna Ex
 Mode LIS(0.2)
 SUM/SEP SUM
 Toggle OFF

TNR
 Antenna ExEy
 Mode A-32
 Sweep ABCDE