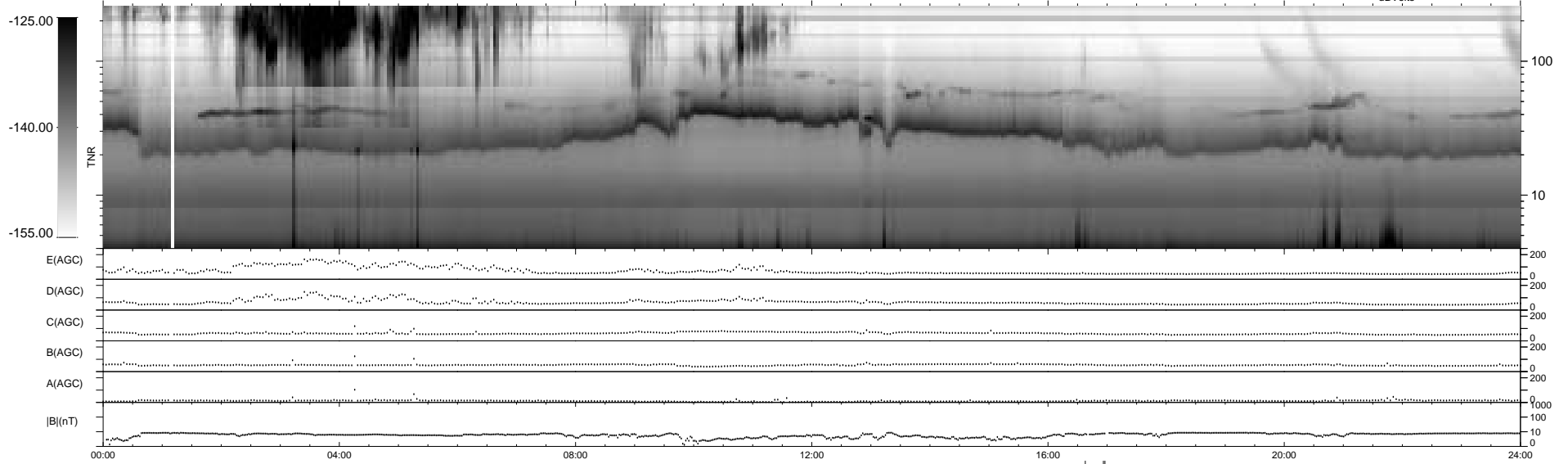
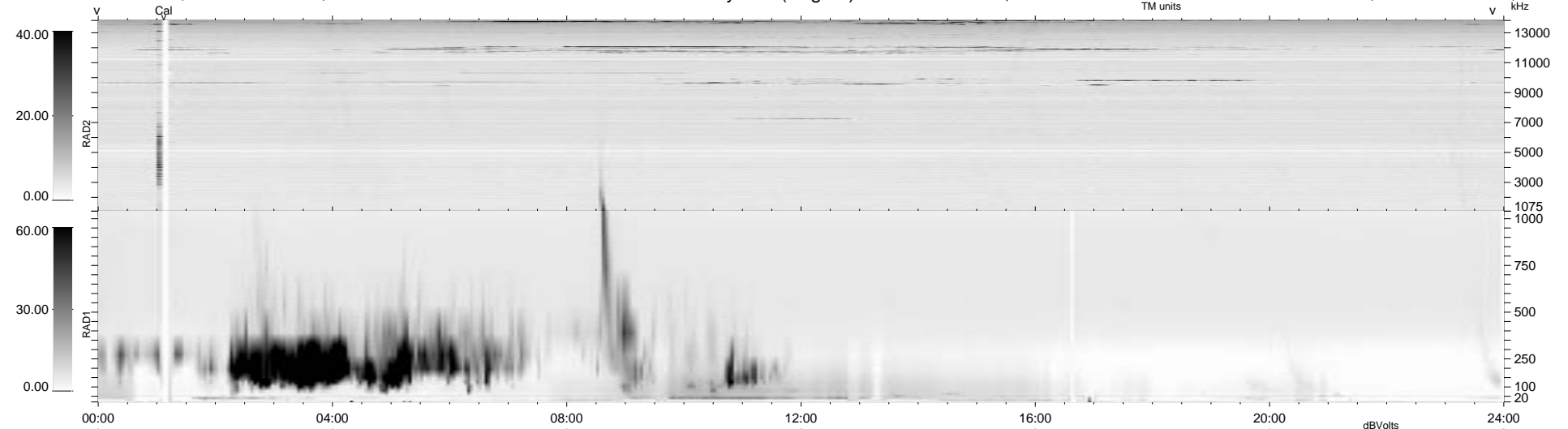


17 bad + 919 good MF/939MF projected (97%) - 3 missing MFs
 Avg interval = 180 secs
 Re = - 213.75 (212.77, 15.72, -13.00 GSE)

1.7d VMS-SunOS LZ version = v01
 DAILY Mon Sep 22, 2008
 Re = 214.67 (213.70, 16.21, -12.50 GSE)

WIND/WAVES Summary Plot (Page 1) for 23-FEB-1997, DOY = 54



```

RAD2
Antenna Ey .....
Mode LIN(1) .....
SUM/SEP SUM .....
Toggle OFF .....

RAD1
Antenna Ex .....
Mode LIS(0.2) .....
SUM/SEP SUM .....
Toggle OFF .....

TNR
Antenna ExEy .....
Mode A-32 .....
Sweep ABCDE .....
  
```