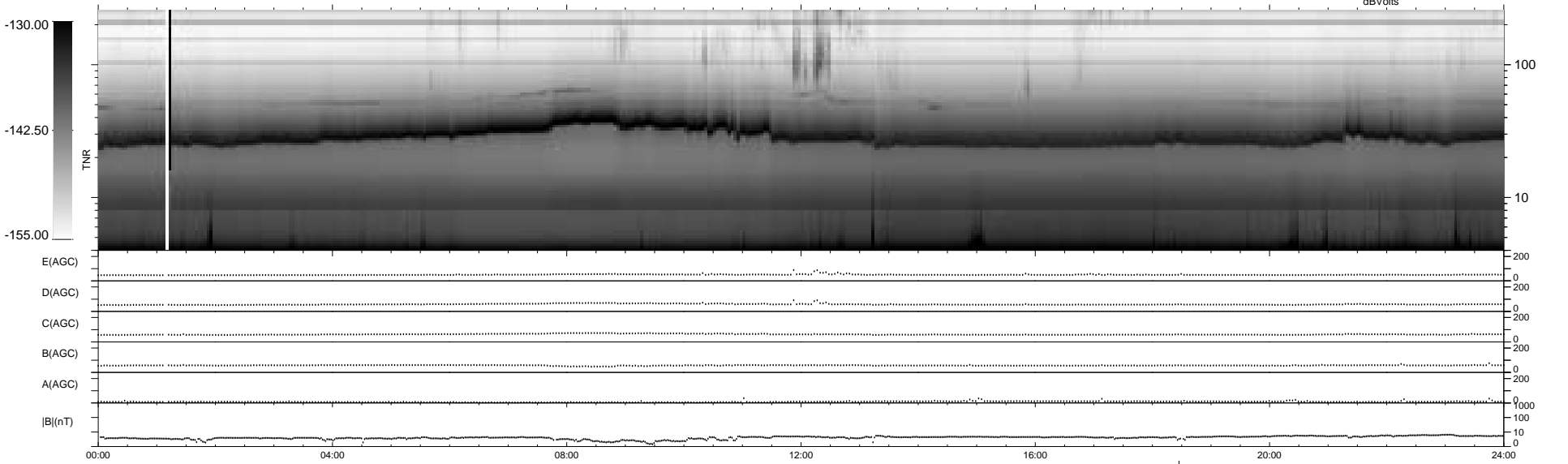
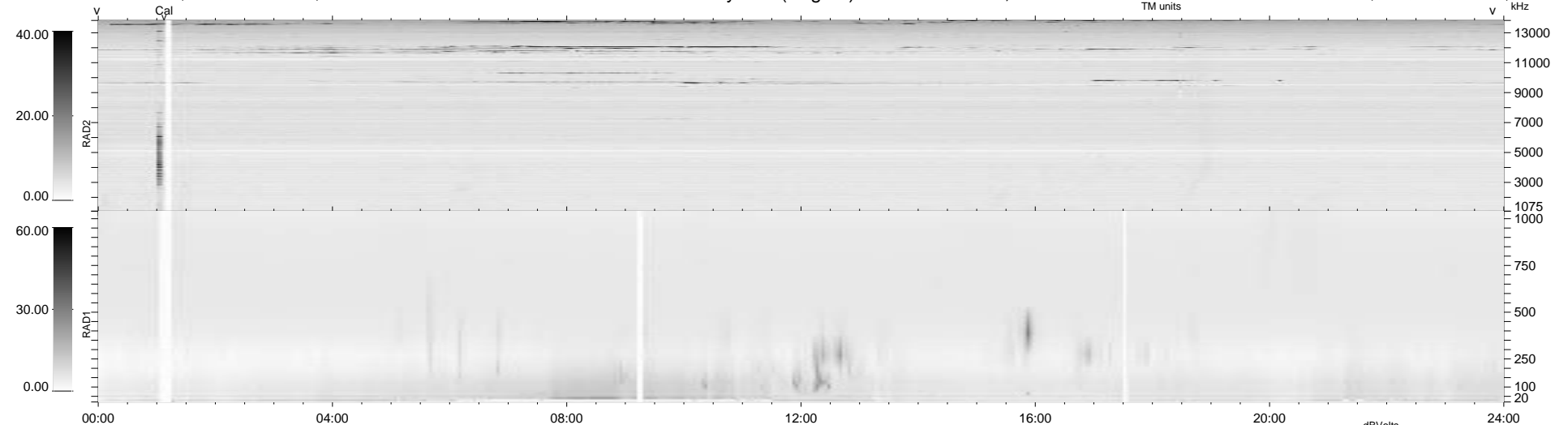


12 bad + 927 good MF/940MF projected (98%) - 1 missing MF  
 Avg interval = 180 secs  
 Re = 203.62 (202.80, 7.39, -16.72 GSE)

1.7d VMS-SunOS LZ version = v01  
 DAILY Mon Sep 22, 2008  
 Re = 204.76 (203.92, 8.56, -16.47 GSE)

### WIND/WAVES Summary Plot (Page 1) for 13-FEB-1997, DOY = 44



```

RAD2
Antenna Ey
Mode LIN(1)
SUM/SEP SUM
Toggle OFF

RAD1
Antenna Ex
Mode LIS(0.2)
SUM/SEP SUM
Toggle OFF

TNR
Antenna ExEy
Mode A-32
Sweep ABCDE
  
```