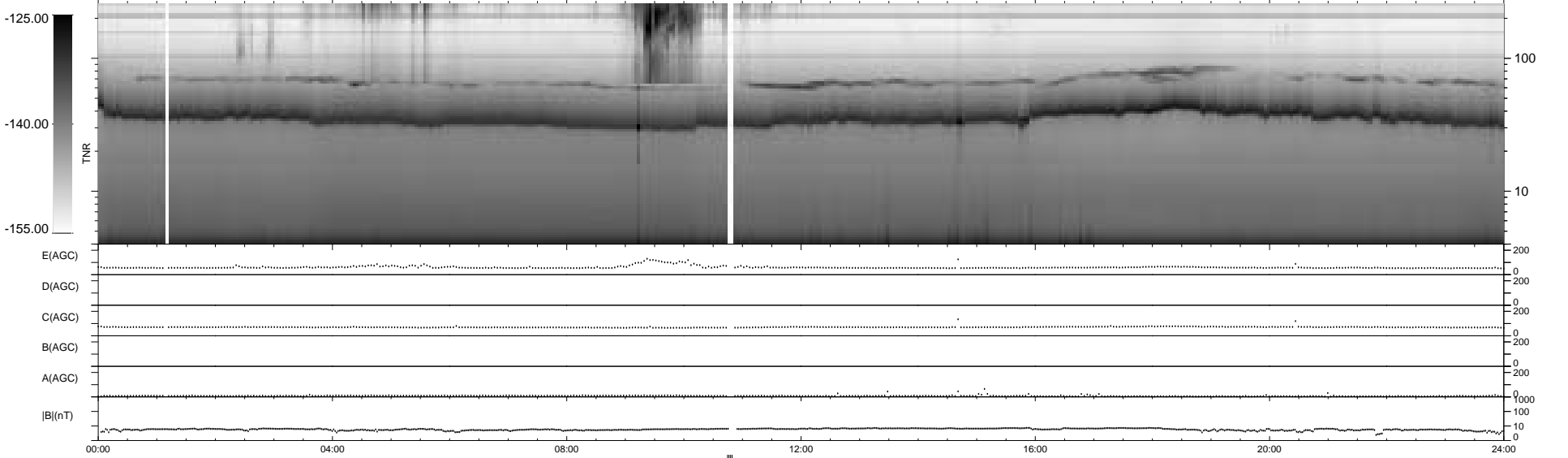
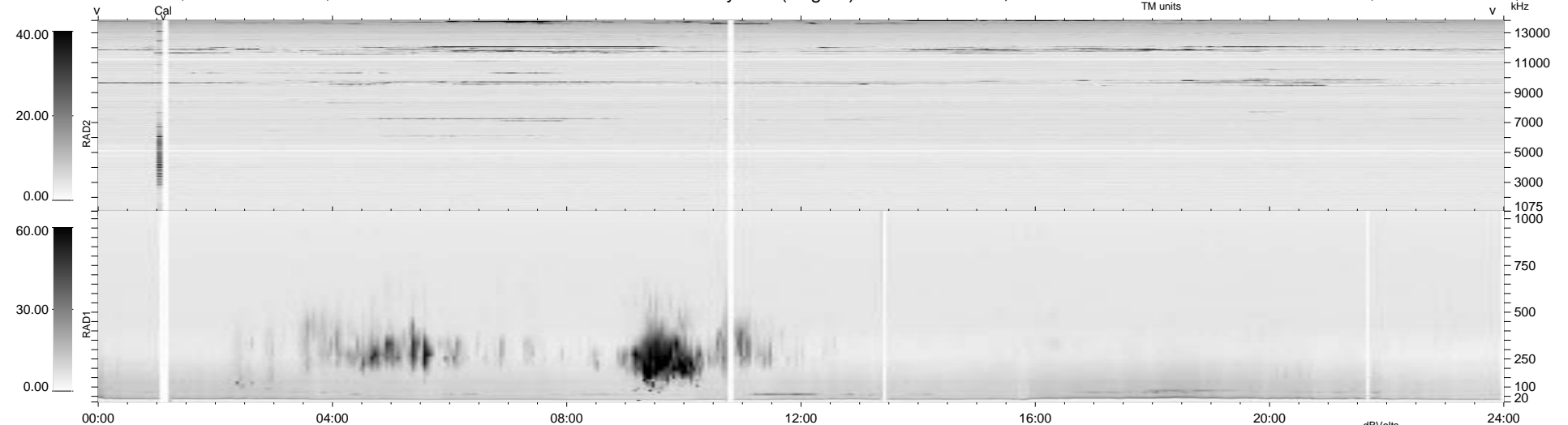


7 bad + 928 good MF/939MF projected (98%) - 4 missing MFs  
 Avg interval = 180 secs  
 Re = 142.79 (136.29, -41.11, -11.09 GSE)

1.7d VMS-SunOS LZ version = v01  
 DAILY Mon Sep 22, 2008  
 Re = 146.55 (140.82, -38.78, -11.83 GSE)

### WIND/WAVES Summary Plot (Page 1) for 18-JAN-1997, DOY = 18



```

RAD2
Antenna Ey .....
Mode LIN(1) .....
SUM/SEP SUM .....
Toggle OFF .....

RAD1
Antenna Ex .....
Mode LIS(2,3) .....
SUM/SEP SUM .....
Toggle OFF .....

TNR
Antenna ExEy .....
Mode A-32 .....
Sweep ACE .....
  
```