

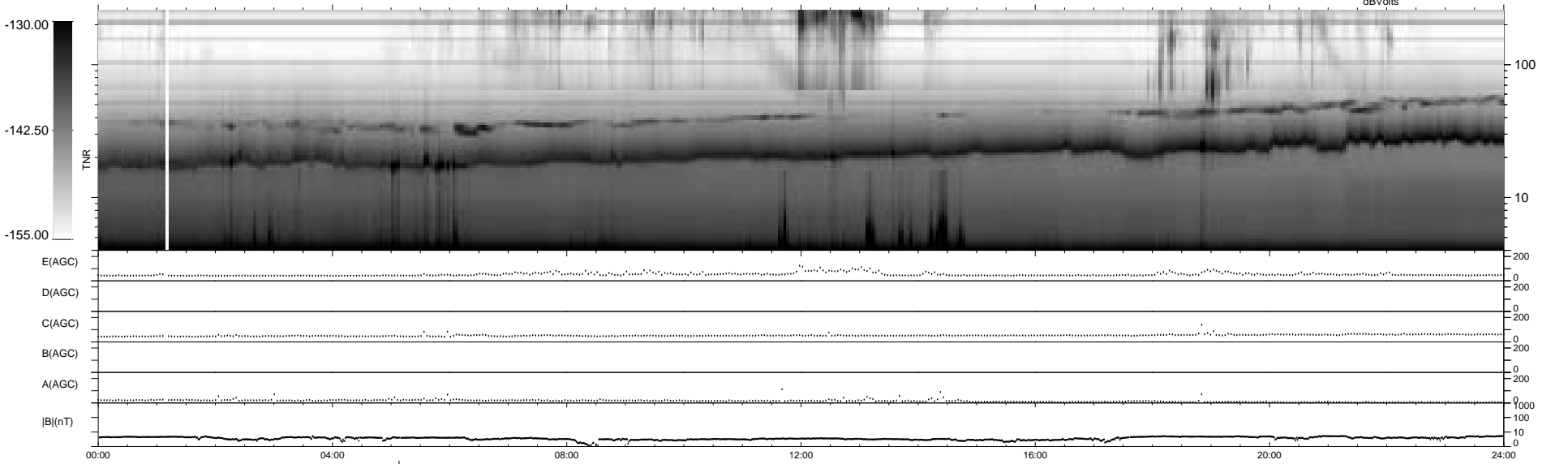
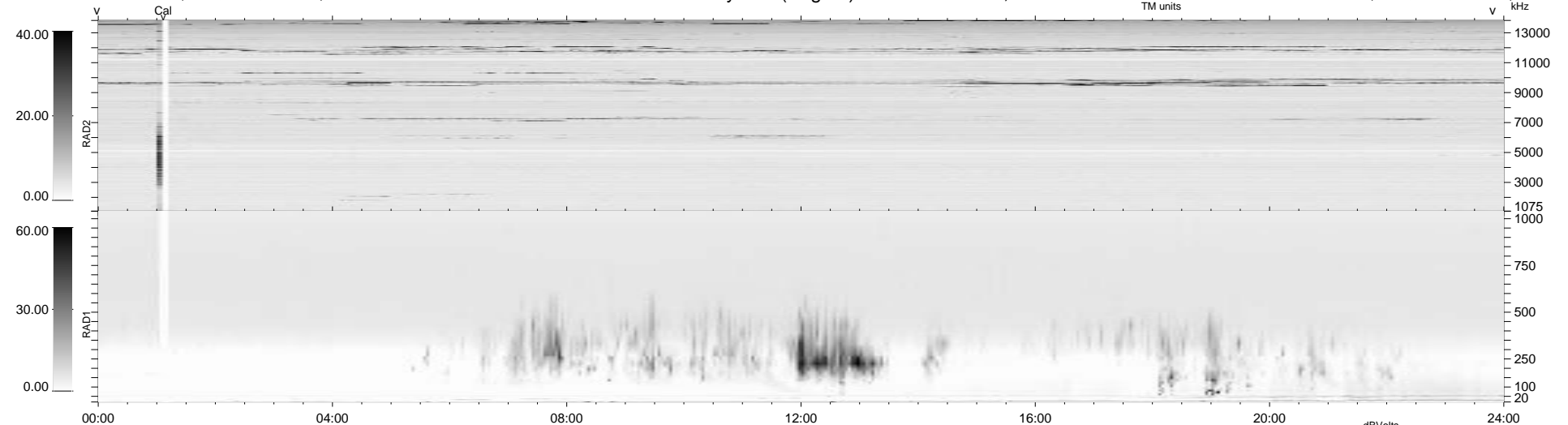
21 bad + 1857 good MF/1879MF projected (98%) - 1 missing MF
 Avg interval = 180 secs
 Re = -125.48 (114.52, -50.73, -7.61 GSE)

1.7d VMS-SunOS

LZ version = v01

WIND/WAVES Summary Plot (Page 1) for 14-JAN-1997, DOY = 14

DAILY Mon Sep 22, 2008
 Re = 130.14 (120.53, -48.33, -8.55 GSE)



```

RAD2
Antenna Ey .....
Mode LIN(1) .....
SUM/SEP SUM .....
Toggle OFF .....

RAD1
Antenna Ex .....
Mode LIS(2,3) .....
SUM/SEP SUM .....
Toggle OFF .....

TNR
Antenna ExEy .....
Mode A-32 .....
Sweep ACE .....
  
```