

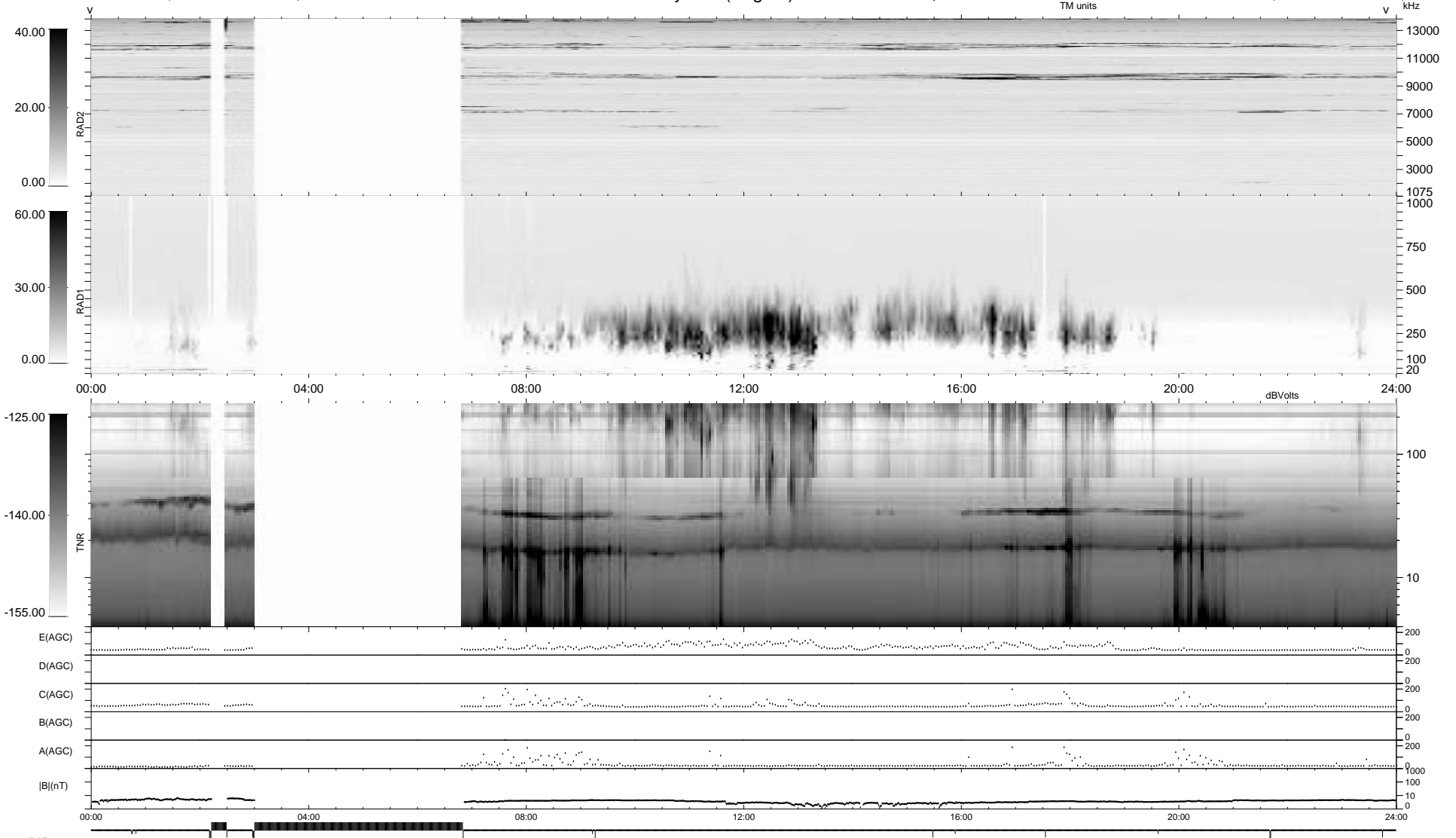
20 bad + 1536 good MF/1878MF projected (81%) - 322 missing MFs  
 Avg interval = 180 secs  
 Re = - 120.50 (107.97, -53.10, -6.62 GSE)

1.7d VMS-SunOS LZ version = v01

DAILY Mon Sep 22, 2008

Re = 125.45 (114.47, -50.74, -7.61 GSE)

### WIND/WAVES Summary Plot (Page 1) for 13-JAN-1997, DOY = 13



```

RAD2
Antenna Ey .....
Mode LIN(1) .....
SUM/SEP SUM .....
Toggle OFF .....

RAD1
Antenna Ex .....
Mode LIS(2,3) .....
SUM/SEP SUM .....
Toggle OFF .....

TNR
Antenna ExEy .....
Mode A-32 .....
Sweep ACE .....
  
```