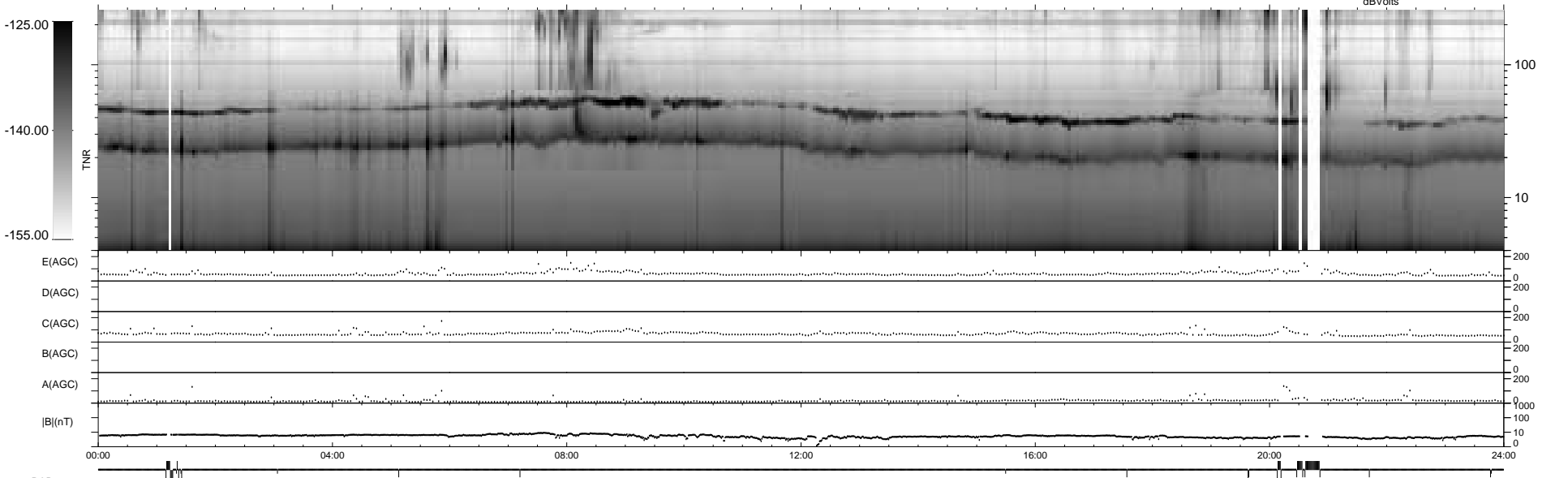
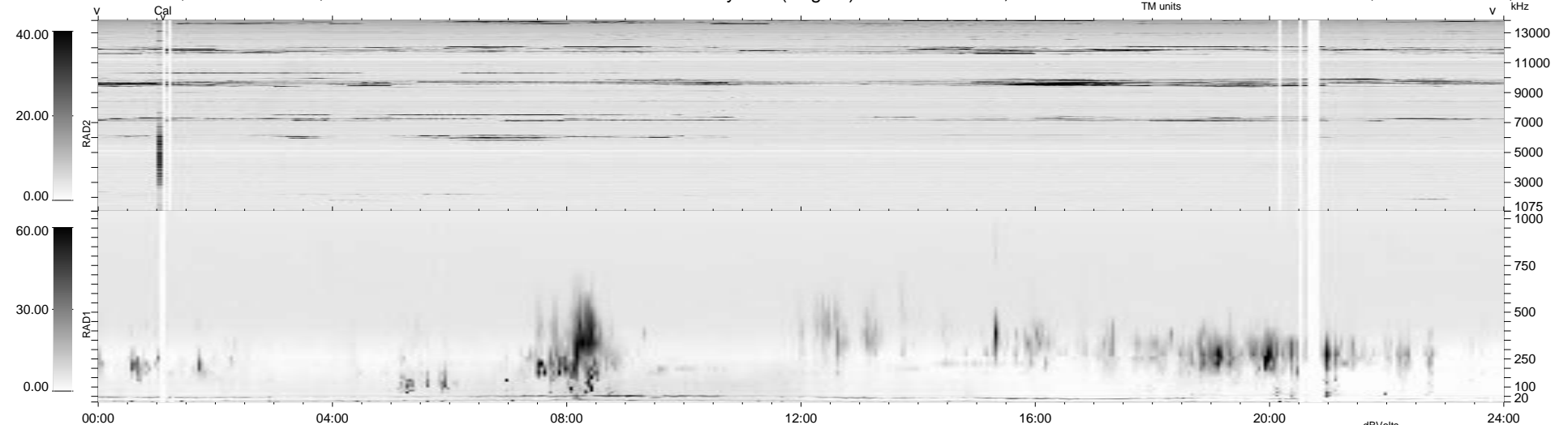


25 bad + 1817 good MF/1878MF projected (96%) - 36 missing MFs
 Avg interval = 180 secs
 Re = 115.21 (100.86, -55.39, -5.59 GSE)

1.7d VMS-SunOS LZ version = v01
 DAILY Mon Sep 22, 2008
 Re = 120.47 (107.92, -53.11, -6.62 GSE)

WIND/WAVES Summary Plot (Page 1) for 12-JAN-1997, DOY = 12



RAD2
 Antenna Ey
 Mode LIN(1)
 SUM/SEP SUM
 Toggle OFF
 RAD1
 Antenna Ex
 Mode LIS(2,3)
 SUM/SEP SUM
 Toggle OFF
 TNR
 Antenna ExEy
 Mode A-32
 Sweep ACE