

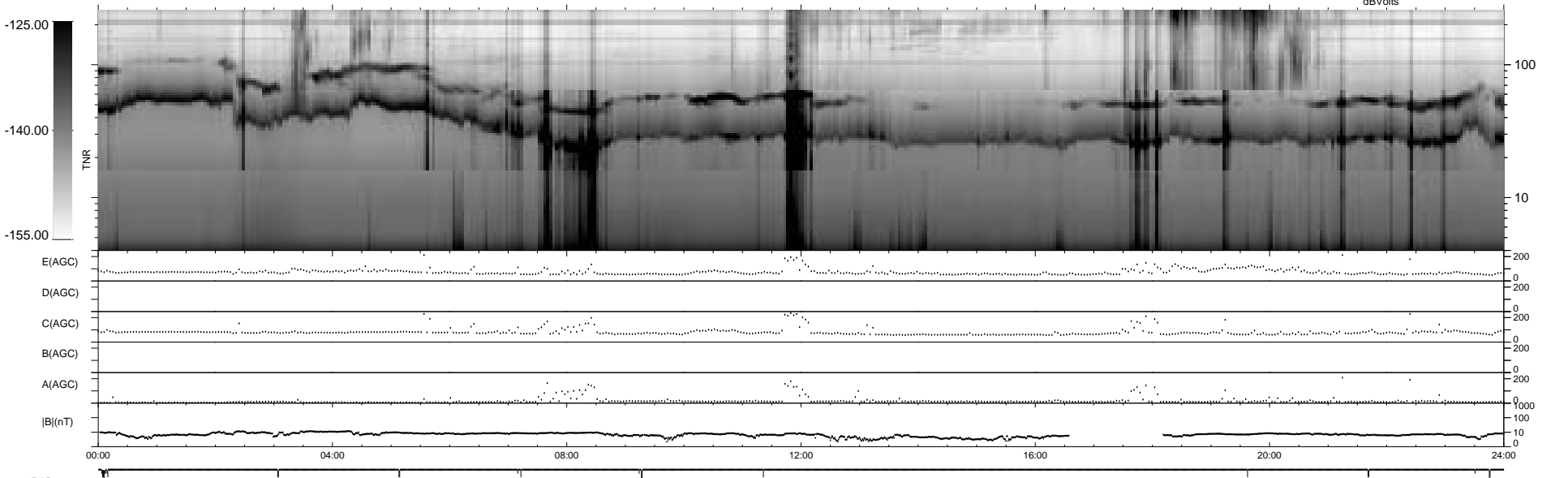
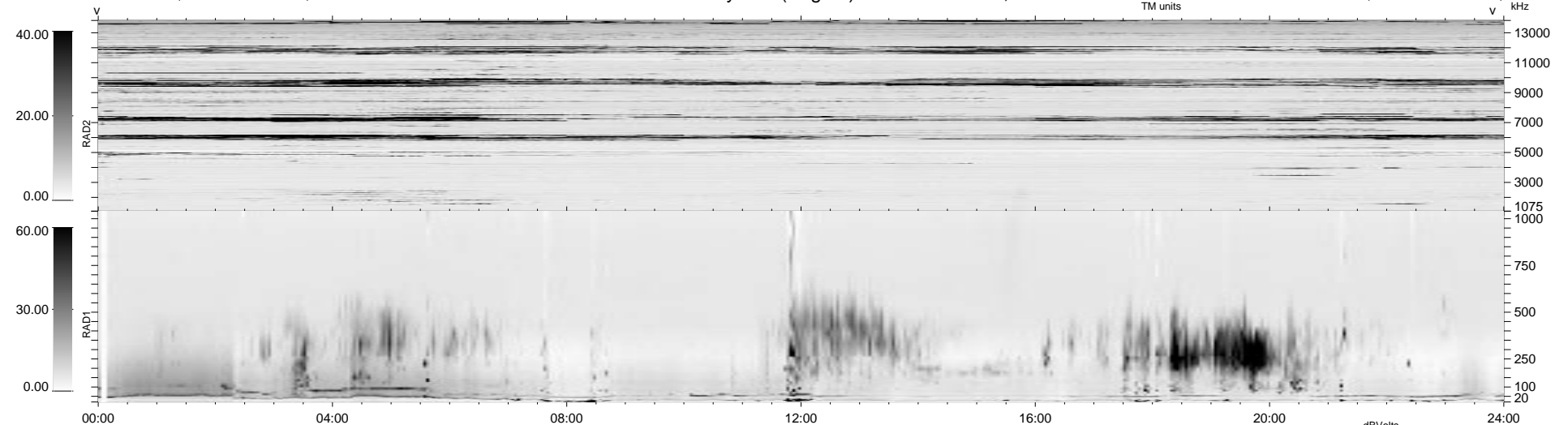
24 bad + 1854 good MF/1878MF projected (98%) - 0 missing MFs
 Avg interval = 180 secs
 Re = 83.03 (54.35, -62.77, 0.13 GSE)

1.7d VMS-SunOS LZ version = v01

DAILY Mon Sep 22, 2008

Re = 90.28 (65.34, -62.28, -1.06 GSE)

WIND/WAVES Summary Plot (Page 1) for 07-JAN-1997, DOY = 7



```

RAD2
Antenna Ey .....
Mode LIN(1) .....
SUM/SEP SUM .....
Toggle OFF .....

RAD1
Antenna Ex .....
Mode LIS(2,3) .....
SUM/SEP SUM .....
Toggle OFF .....

TNR
Antenna ExEy .....
Mode A-32 .....
Sweep ACE .....
  
```