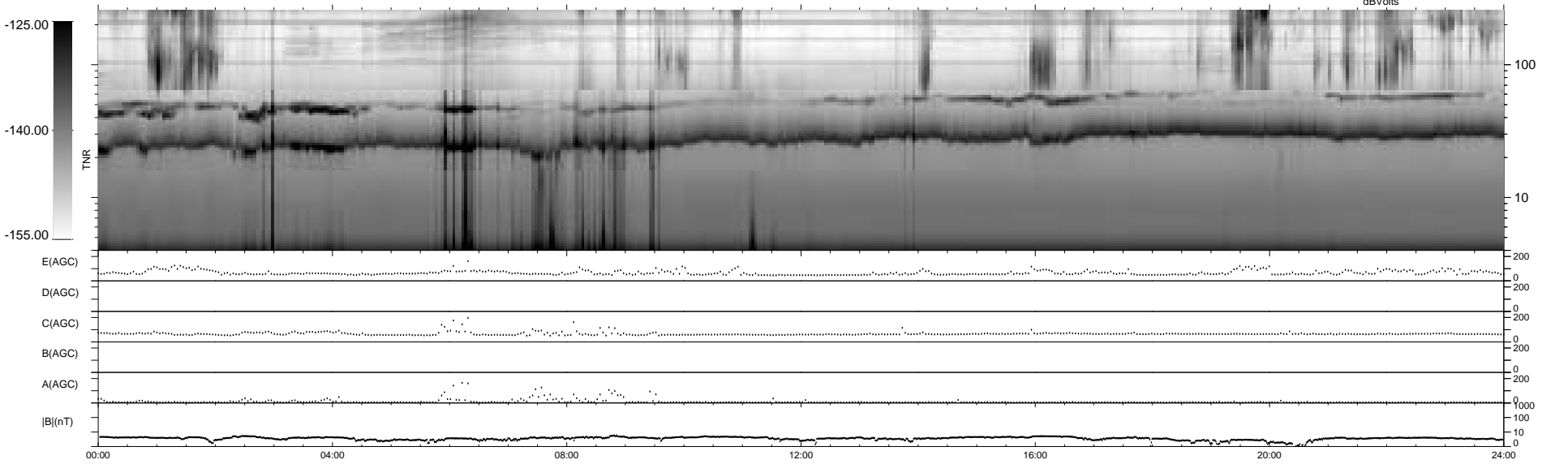
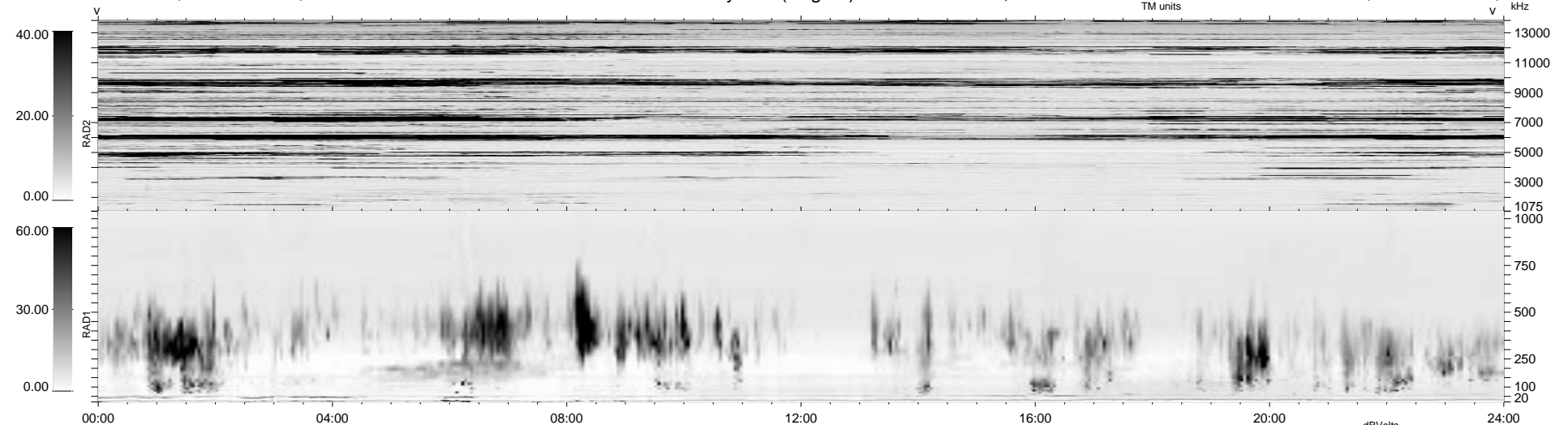


17 bad + 1861 good MF/1878MF projected (99%) - 0 missing MFs
 Avg interval = 180 secs
 Re = 47.71 (1.78, -47.46, 4.55 GSE)

1.7d VMS-SunOS LZ version = v01

WIND/WAVES Summary Plot (Page 1) for 03-JAN-1997, DOY = 3

DAILY Mon Sep 22, 2008
 Re = 57.39 (14.98, -55.28, 3.74 GSE)



RAD2
 Antenna Ey
 Mode LIN(1)
 SUM/SEP SUM
 Toggle OFF

RAD1
 Antenna Ex
 Mode LIS(2,4) LIS(2,8)
 SUM/SEP SUM
 Toggle OFF

TNR
 Antenna ExEy
 Mode A-32
 Sweep ACE