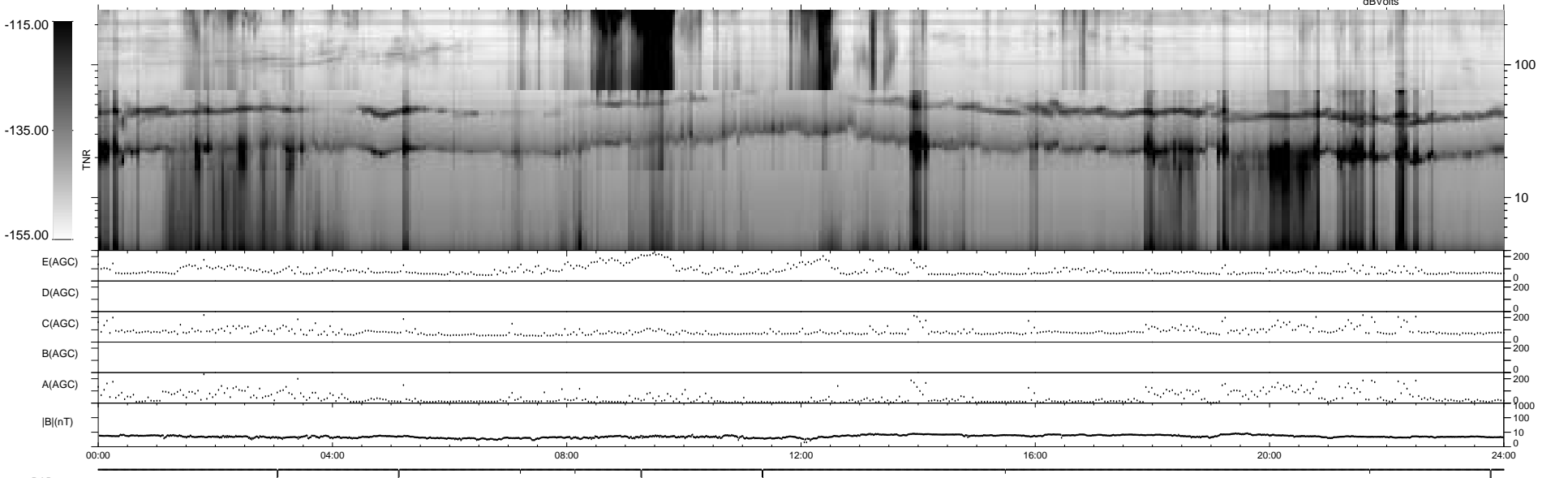
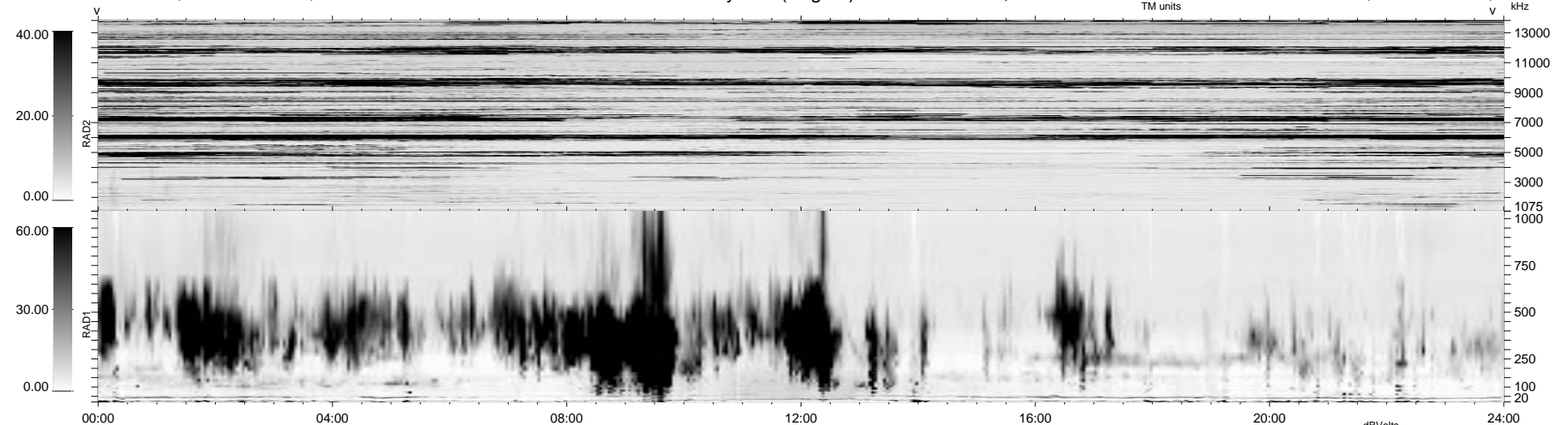


14 bad + 1865 good MF/1879MF projected (99%) - 0 missing MFs
 Avg interval = 180 secs
 Re = 37.49 (-11.46, -35.38, 4.75 GSE)

1.7d VMS-SunOS LZ version = v01
 DAILY Mon Sep 22, 2008
 Re = 47.64 (1.69, -47.40, 4.55 GSE)

WIND/WAVES Summary Plot (Page 1) for 02-JAN-1997, DOY = 2



RAD2
 Antenna Ey
 Mode LIN(1)
 SUM/SEP SEP
 Toggle OFF

RAD1
 Antenna Ex
 Mode LIS(2,4)
 SUM/SEP SUM
 Toggle OFF

TNR
 Antenna ExEy
 Mode A-32
 Sweep ACE