

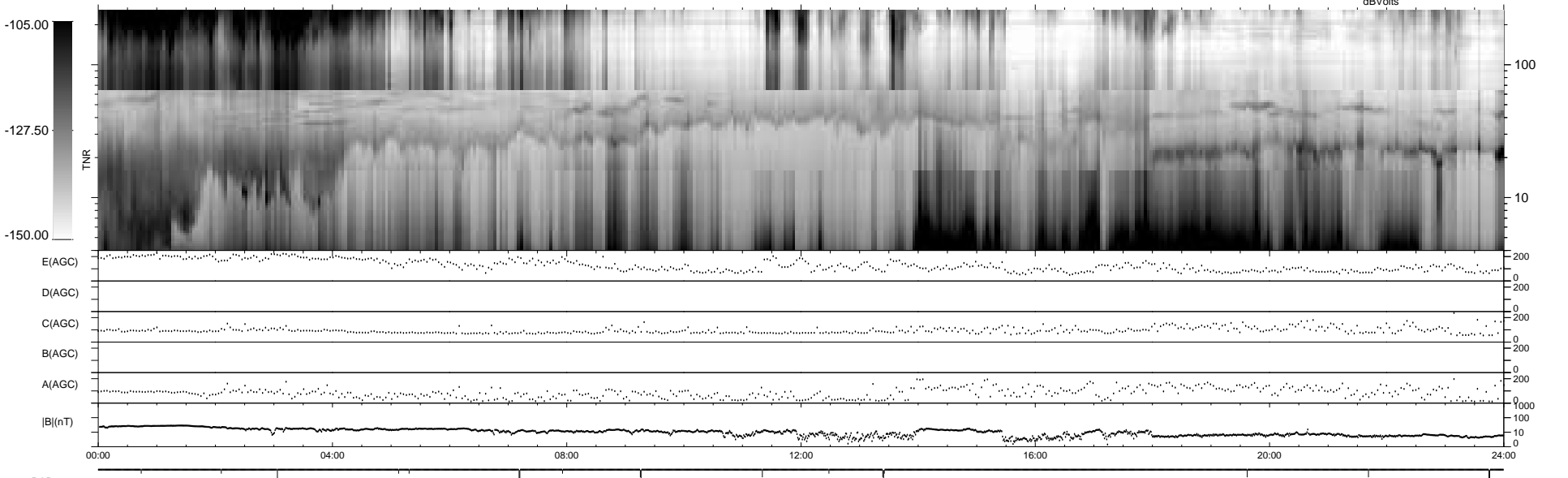
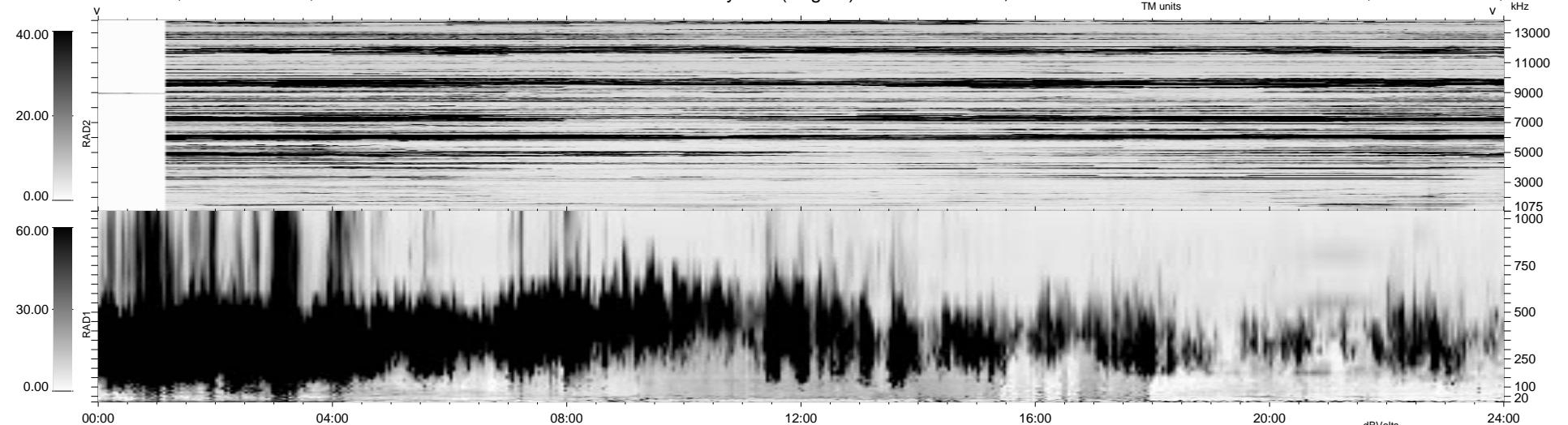
19 bad + 1859 good MF/1878MF projected (98%) - 0 missing MFs
 Avg interval = 180 secs
 Re = - 27.71 (-22.13, -16.22, 3.85 GSE)

1.7d VMS-SunOS

LZ version = v01

WIND/WAVES Summary Plot (Page 1) for 01-JAN-1997, DOY = 1

DAILY Mon Sep 22, 2008
 Re = 37.42 (-11.55, -35.27, 4.75 GSE)



```

RAD2
Antenna Ey ..... LIN(1) .....
Mode LIS(8,12) .....
SUM/SEP SEP .....
Toggle OFF .....

RAD1
Antenna Ex .....
Mode LIS(2,4) .....
SUM/SEP SUM .....
Toggle OFF .....

TNR
Antenna ExEy .....
Mode A-32 .....
Sweep ACE .....
  
```