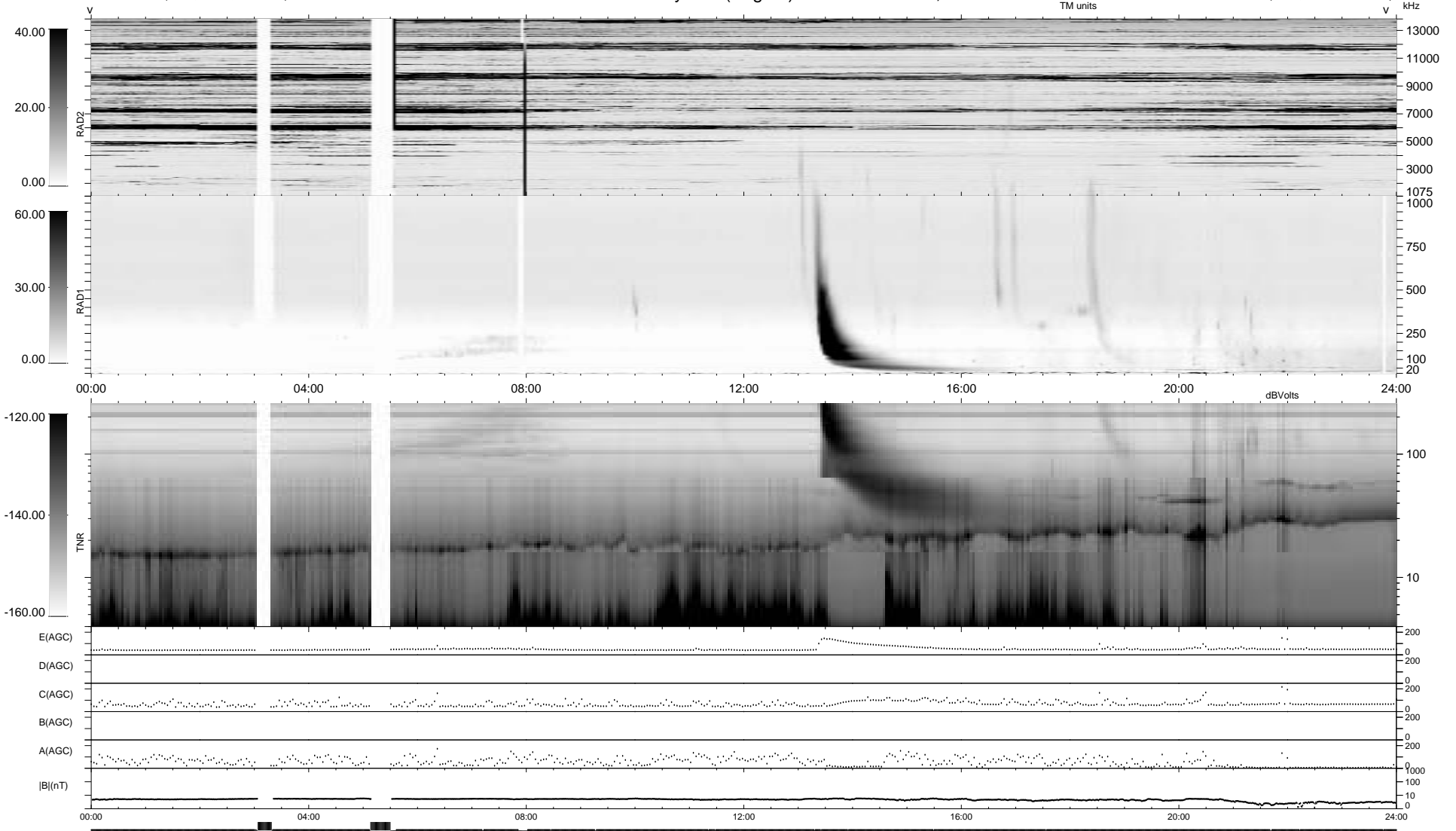


42 bad + 1788 good MF/1879MF projected (95%) - 49 missing MFs  
 Avg interval = 180 secs  
 Re = 49.79 (23.57, -43.62, 4.65 GSE)

1.7d VMS-SunOS LZ version = v01  
 DAILY Thu Sep 25, 2008  
 Re = 59.69 (35.83, -47.42, 5.48 GSE)

WIND/WAVES Summary Plot (Page 1) for 06-DEC-1996, DOY = 341



RAD2  
 Antenna Ey .....  
 Mode LIN(1) .....  
 SUM/SEP SUM .....  
 Toggle OFF .....  
 RAD1  
 Antenna Ex .....  
 Mode LIS(2/4) .....  
 SUM/SEP SUM .....  
 Toggle OFF .....  
 TNR  
 Antenna ExEy .....  
 Mode A-32 .....  
 Sweep ACE .....