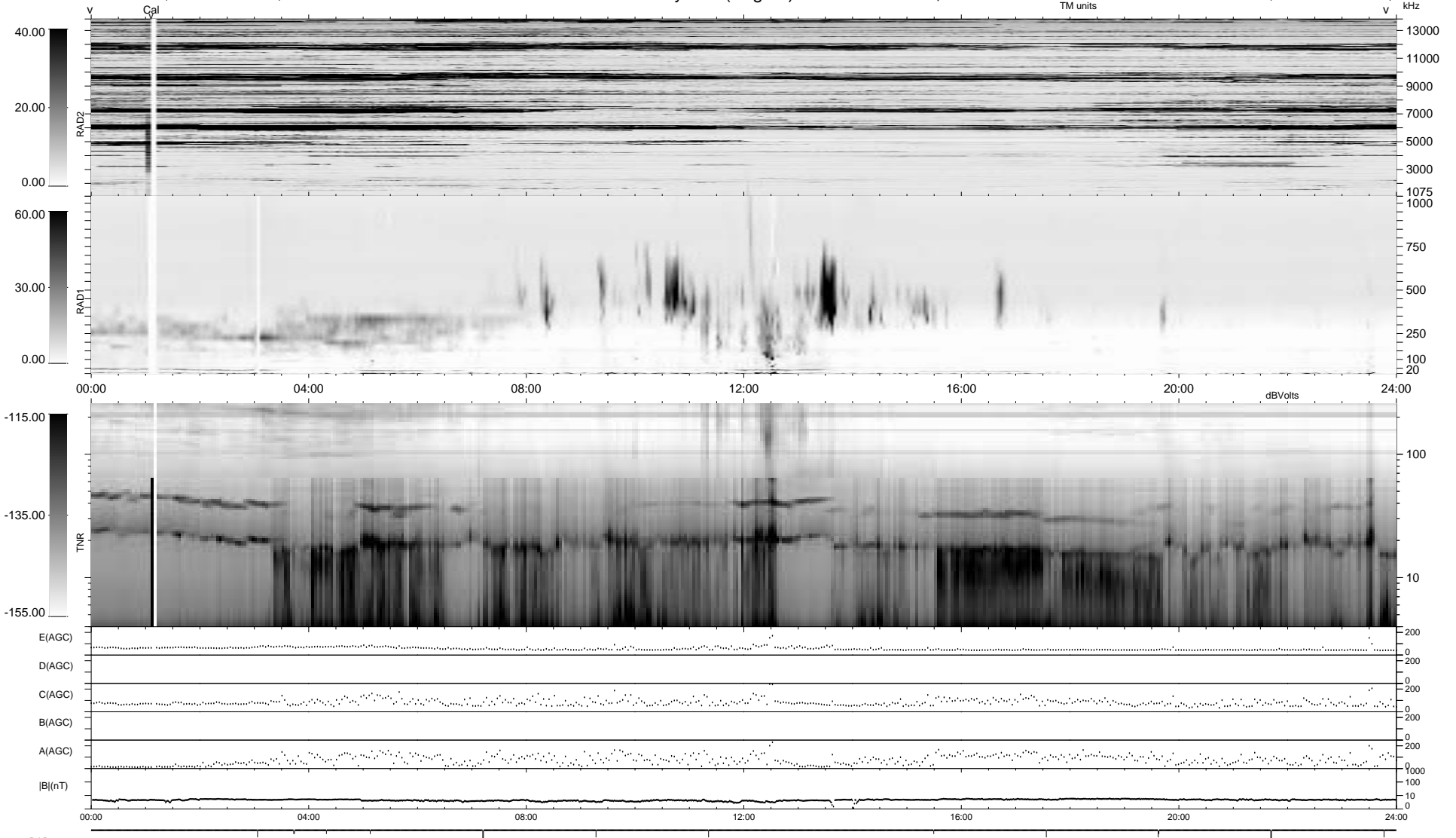


16 bad + 1862 good MF/1878MF projected (99%) - 0 missing MFs
 Avg interval = 180 secs
 Re = -37.90 (9.65, -36.53, 2.99 GSE)

1.7d VMS-SunOS LZ version = v01

WIND/WAVES Summary Plot (Page 1) for 05-DEC-1996, DOY = 340

DAILY Thu Sep 25, 2008
 Re = 49.72 (23.48, -43.58, 4.64 GSE)



RAD2
 Antenna Ey
 Mode LIN(1)
 SUM/SEP SUM
 Toggle OFF
 RAD1
 Antenna Ex
 Mode LIS(2/4)
 SUM/SEP SUM
 Toggle OFF
 TNR
 Antenna ExEy
 Mode A-32
 Sweep ACE