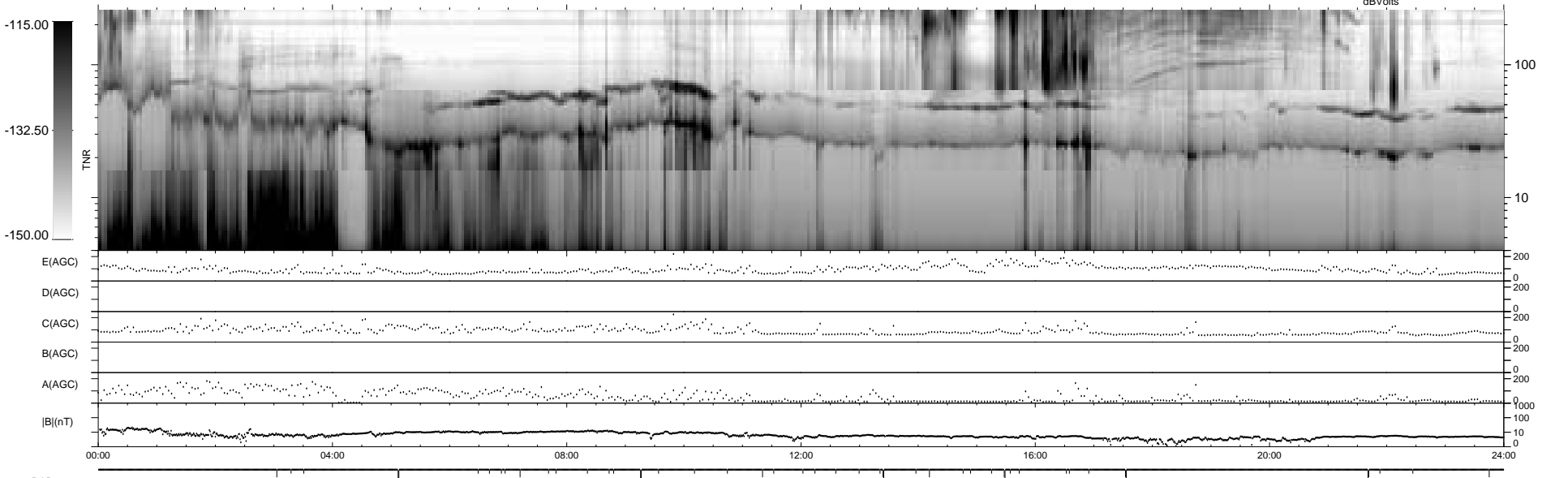
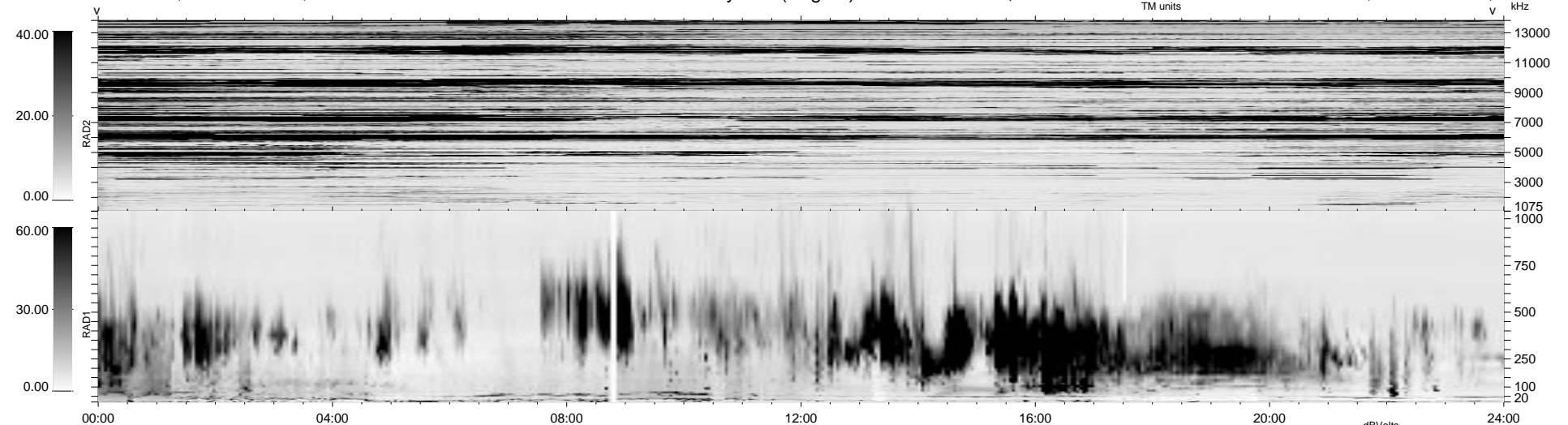


48 bad + 1830 good MF/1878MF projected (97%) - 0 missing MFs
 Avg interval = 180 secs
 Re = 22.59 (-6.12, -21.73, 0.65 GSE)

1.7d VMS-SunOS LZ version = v01

WIND/WAVES Summary Plot (Page 1) for 04-DEC-1996, DOY = 339

DAILY Thu Sep 25, 2008
 Re = 37.81 (9.55, -36.46, 2.97 GSE)



RAD2
 Antenna Ey
 Mode LIN(1)
 SUM/SEP SUM
 Toggle OFF
 RAD1
 Antenna Ex
 Mode LIS(2/4)
 SUM/SEP SUM
 Toggle OFF
 TNR
 Antenna ExEy
 Mode A-32
 Sweep ACE