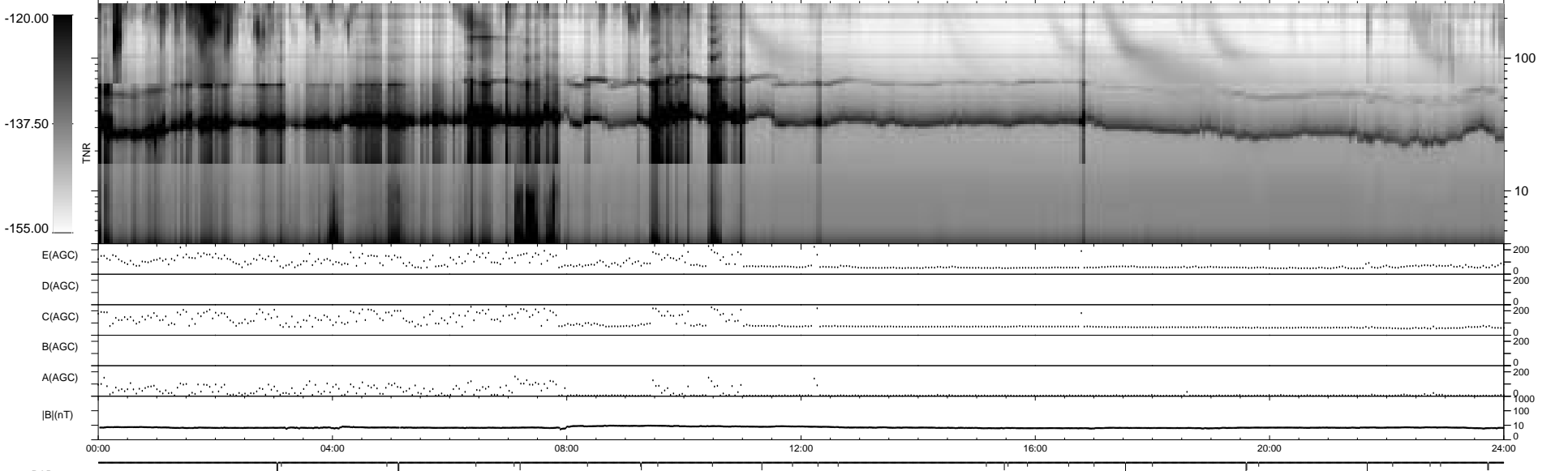
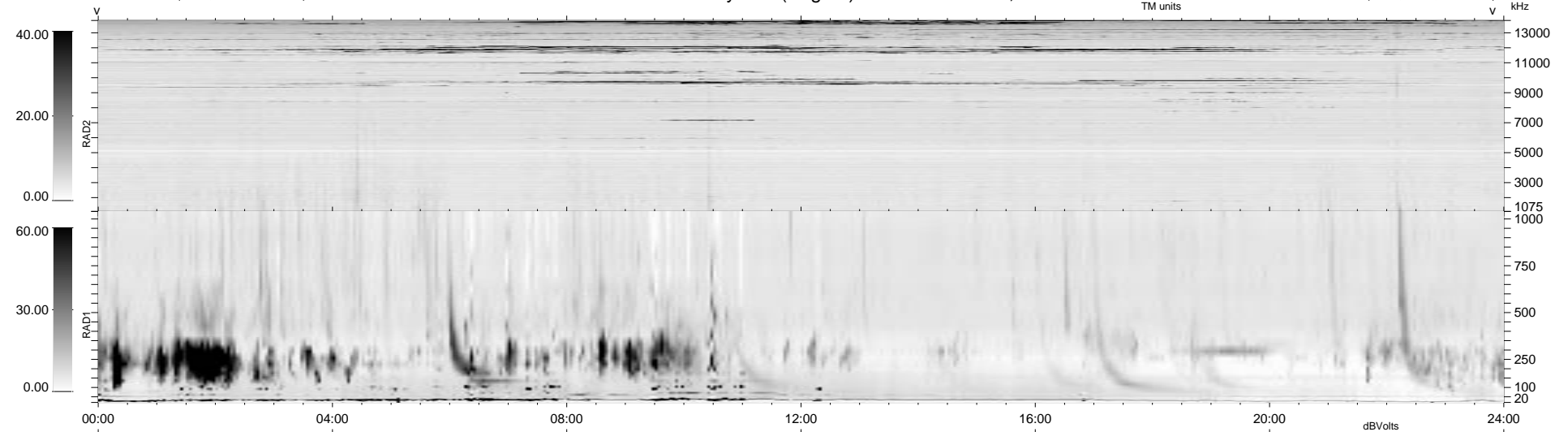


35 bad + 1843 good MF/1878MF projected (98%) - 0 missing MFs
 Avg interval = 180 secs
 Re = 53.16 (51.75, 11.33, 4.46 GSE)

1.7d VMS-SunOS LZ version = v01

WIND/WAVES Summary Plot (Page 1) for 30-NOV-1996, DOY = 335

DAILY Thu Sep 25, 2008
 Re = 42.70 (39.13, 16.86, 2.90 GSE)



RAD2
 Antenna Ey
 Mode LIN(1)
 SUM/SEP SUM
 Toggle OFF

RAD1
 Antenna Ex
 Mode LIS(2/4)
 SUM/SEP SUM
 Toggle OFF

TNR
 Antenna ExEy
 Mode A-32
 Sweep ACE