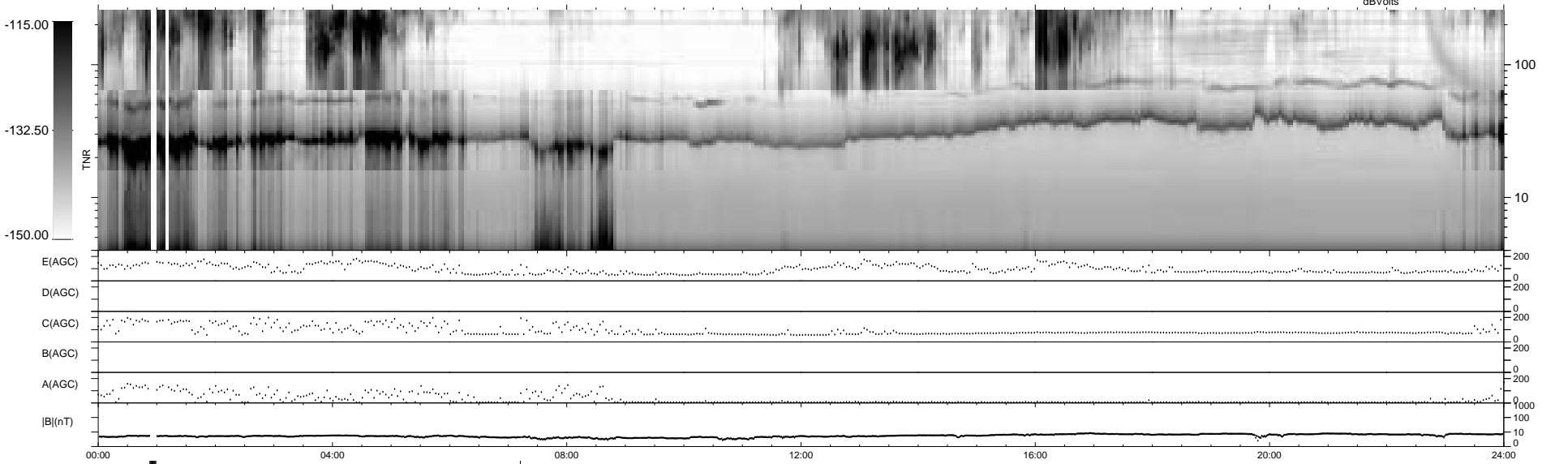
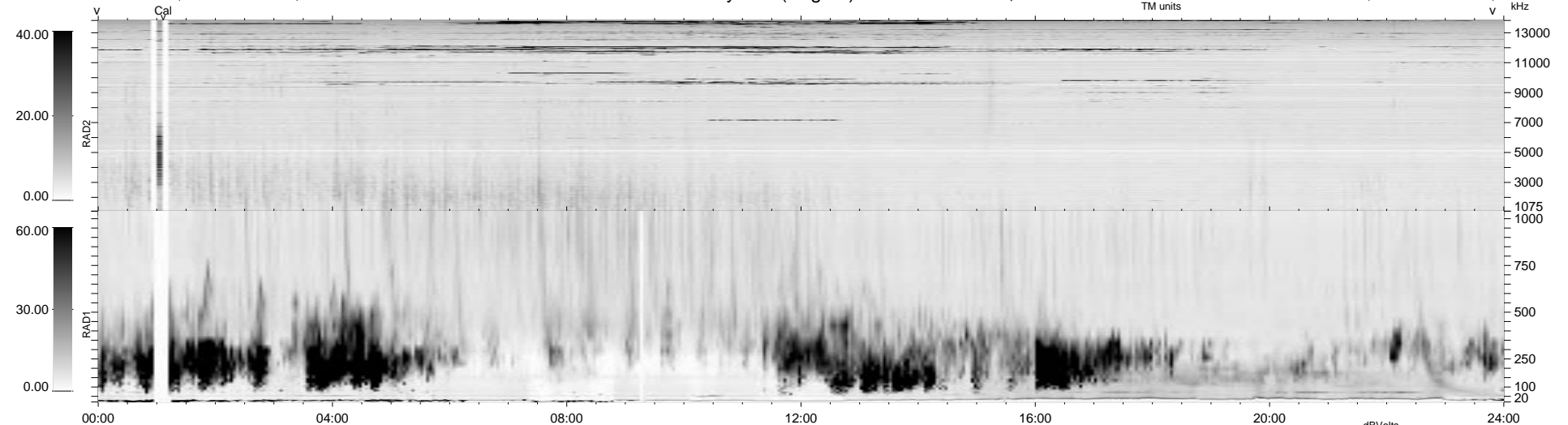


20 bad + 1849 good MF/1879MF projected (98%) - 10 missing MFs
 Avg interval = 180 secs
 Re = 61.21 (60.72, 5.23, 5.68 GSE)

1.7d VMS-SunOS LZ version = v01
 DAILY Thu Sep 25, 2008
 Re = 53.22 (51.82, 11.29, 4.46 GSE)

WIND/WAVES Summary Plot (Page 1) for 29-NOV-1996, DOY = 334



```

RAD2
Antenna Ey .....
Mode LIN(1) .....
SUM/SEP SUM .....
Toggle OFF .....

RAD1
Antenna Ex .....
Mode LIS(2,4) .....
SUM/SEP SUM .....
Toggle OFF .....

TNR
Antenna ExEy .....
Mode A-32 .....
Sweep ACE .....
  
```