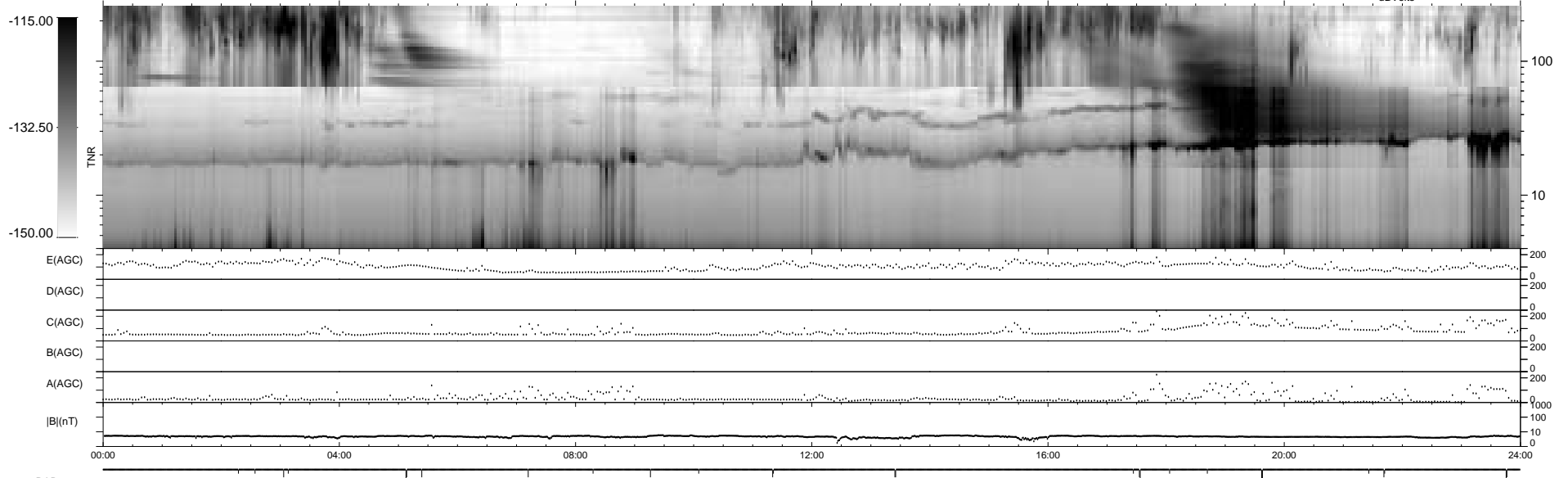
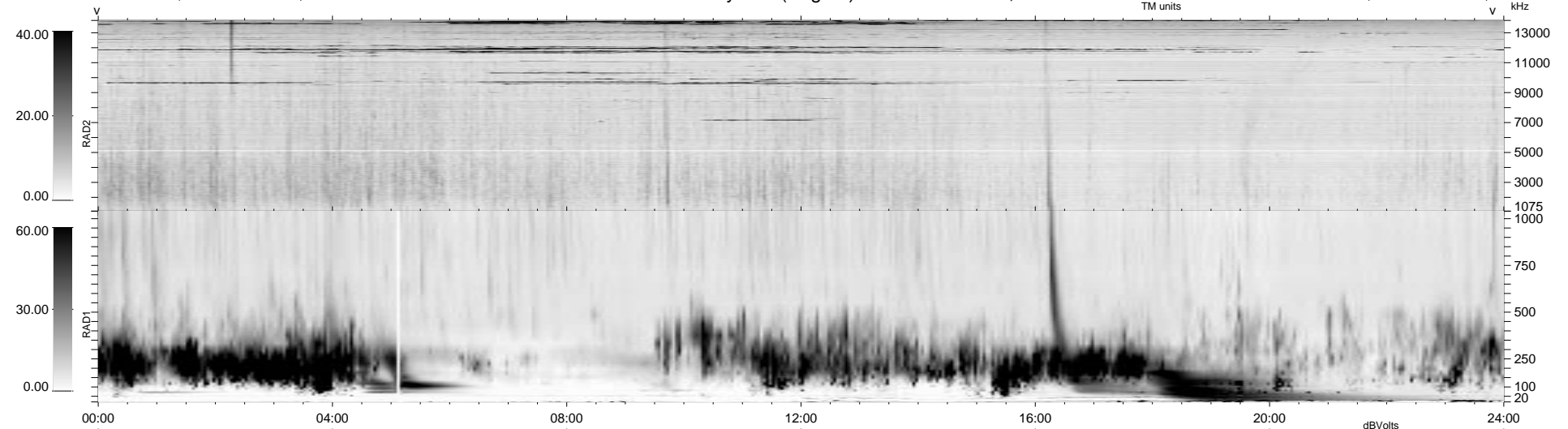


27 bad + 1851 good MF/1878MF projected (98%) - 0 missing MFs
 Avg interval = 180 secs
 Re = - 67.24 (66.91, -0.88, 6.62 GSE)

1.7d VMS-SunOS LZ version = v01

WIND/WAVES Summary Plot (Page 1) for 28-NOV-1996, DOY = 333

DAILY Thu Sep 25, 2008
 Re = 61.26 (60.77, 5.18, 5.69 GSE)



RAD2
 Antenna Ey
 Mode LIN(1)
 SUM/SEP SUM
 Toggle OFF
 RAD1
 Antenna Ex
 Mode LIS(2/4)
 SUM/SEP SUM
 Toggle OFF
 TNR
 Antenna ExEy
 Mode A-32
 Sweep ACE