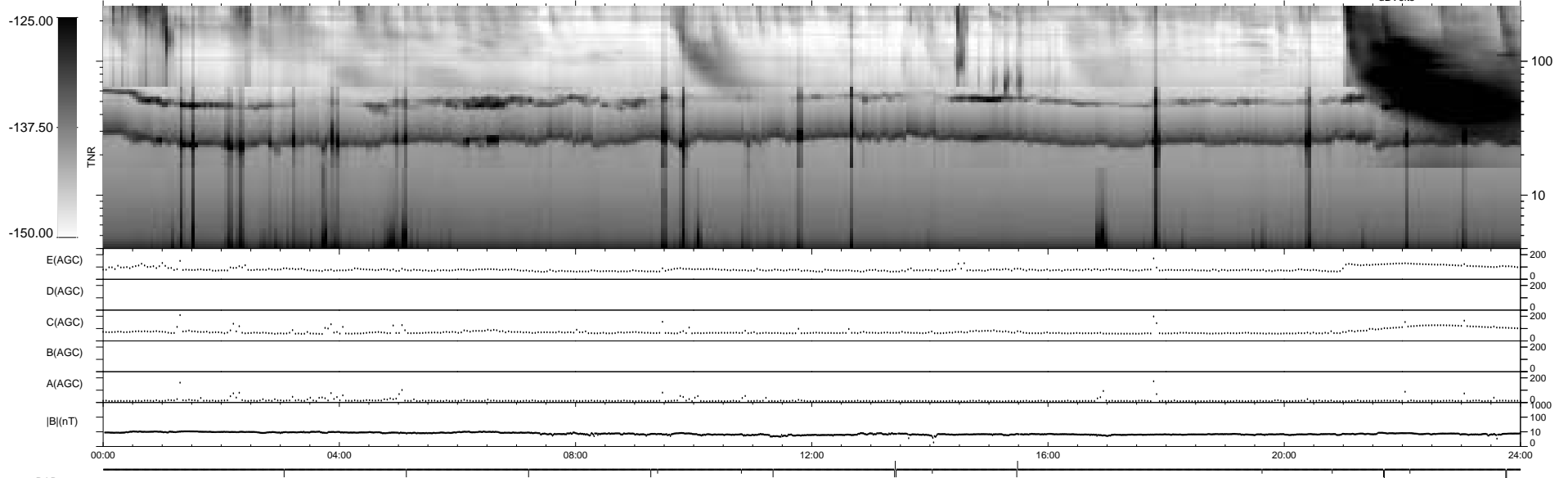
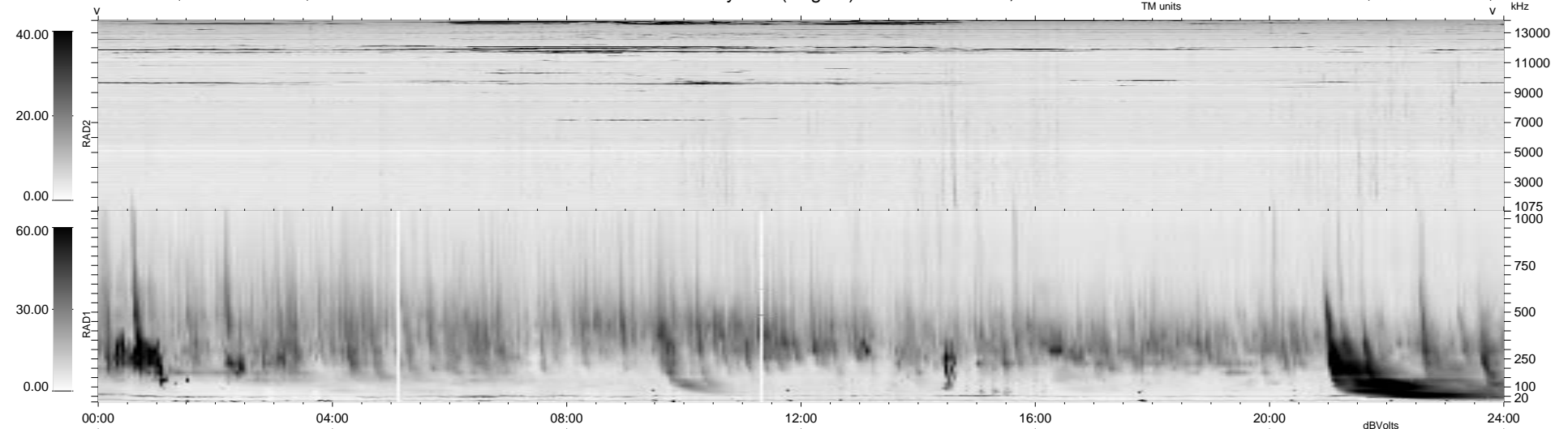


18 bad + 1858 good MF/1878MF projected (98%) - 2 missing MFs
 Avg interval = 180 secs
 Re = 74.32 (72.87, -12.33, 7.78 GSE)

1.7d VMS-SunOS LZ version = v01

WIND/WAVES Summary Plot (Page 1) for 26-NOV-1996, DOY = 331

DAILY Thu Sep 25, 2008
 Re = 71.58 (70.88, -6.81, 7.32 GSE)



RAD2
 Antenna Ey
 Mode LIN(1)
 SUM/SEP SUM
 Toggle OFF
 RAD1
 Antenna Ex
 Mode LIS(2/4)
 SUM/SEP SUM
 Toggle OFF
 TNR
 Antenna ExEy
 Mode A-32
 Sweep ACE