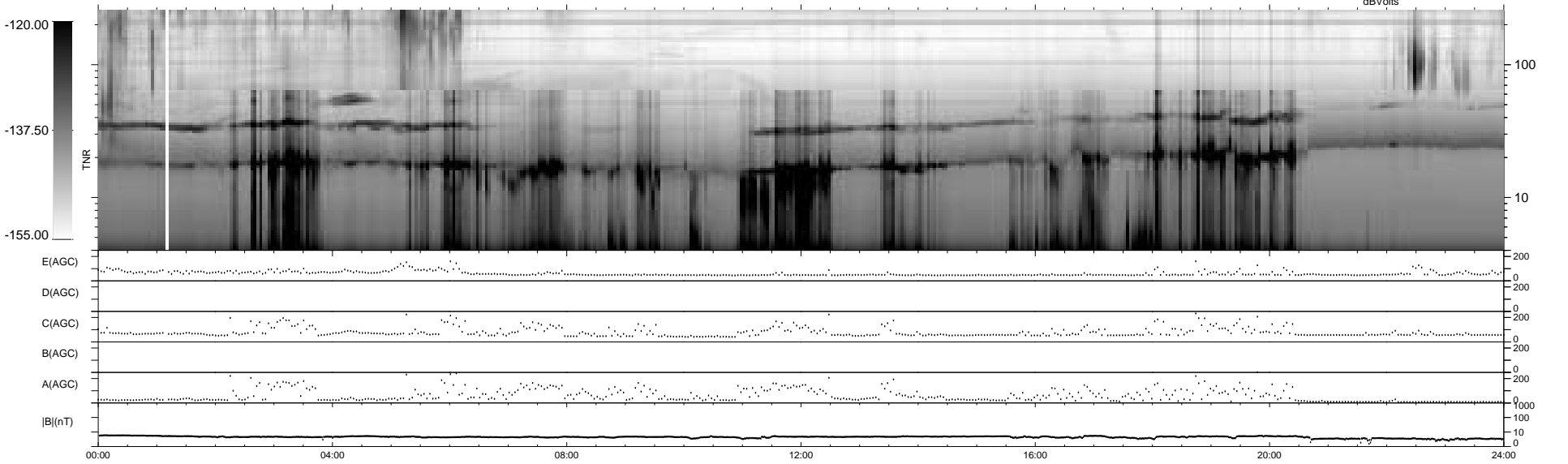
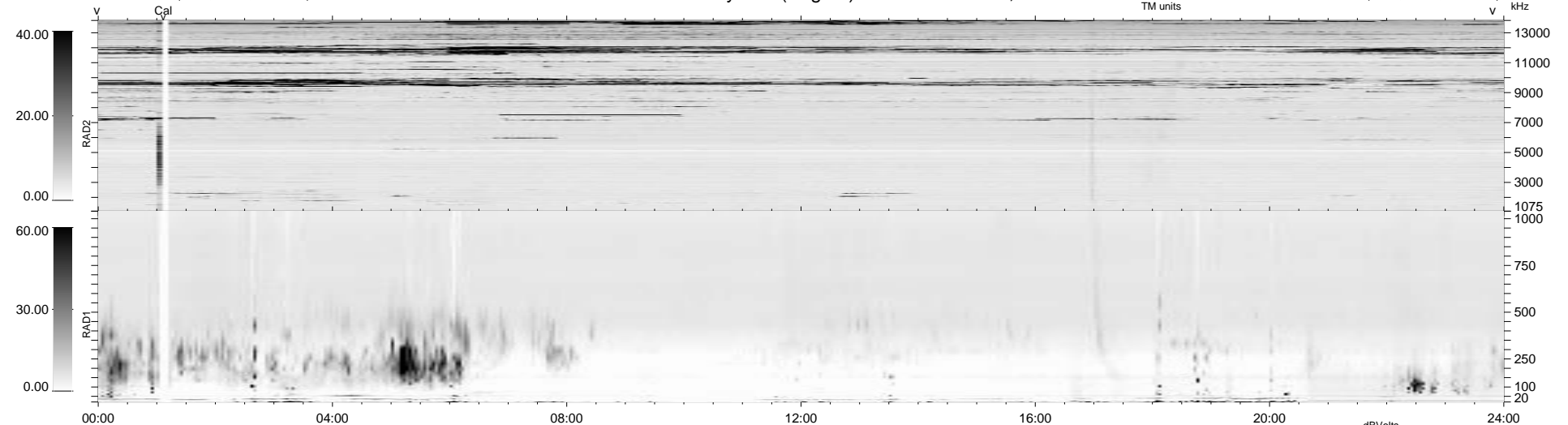


16 bad + 1863 good MF/1879MF projected (99%) - 0 missing MFs
 Avg interval = 180 secs
 Re = 66.34 (57.18, -32.94, 6.80 GSE)

1.7d VMS-SunOS LZ version = v01

WIND/WAVES Summary Plot (Page 1) for 21-NOV-1996, DOY = 326

DAILY Thu Sep 25, 2008
 Re = 70.93 (63.80, -30.10, 7.45 GSE)



```

RAD2
Antenna Ey .....
Mode LIN(1) .....
SUM/SEP SUM .....
Toggle OFF .....

RAD1
Antenna Ex .....
Mode LIS(2,4) .....
SUM/SEP SUM .....
Toggle OFF .....

TNR
Antenna ExEy .....
Mode A-32 .....
Sweep ACE .....
  
```