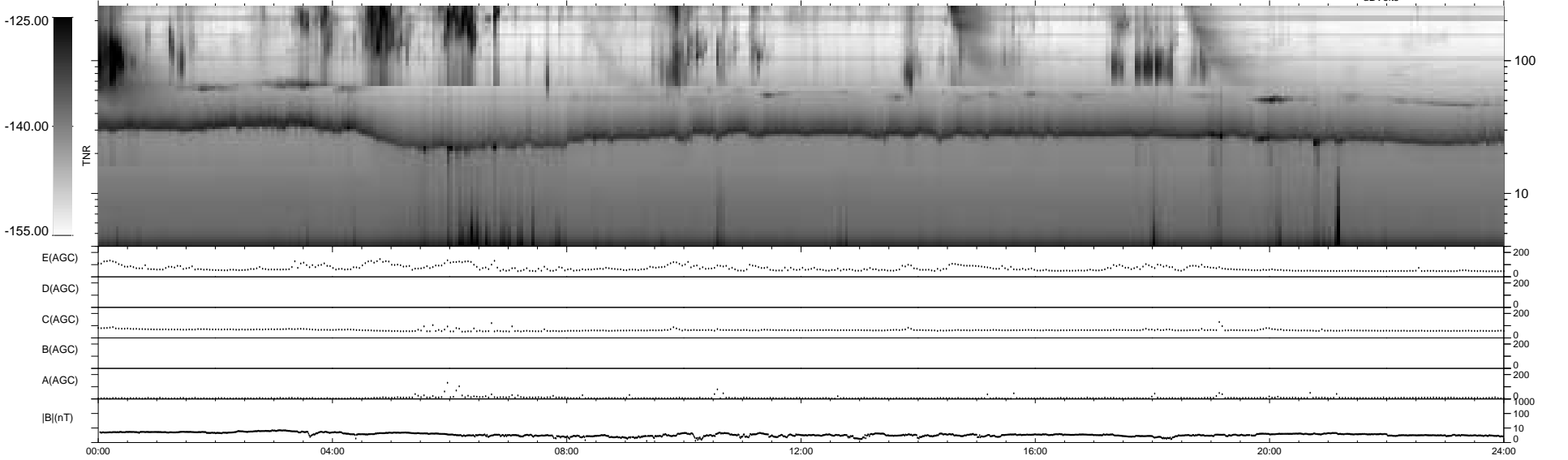
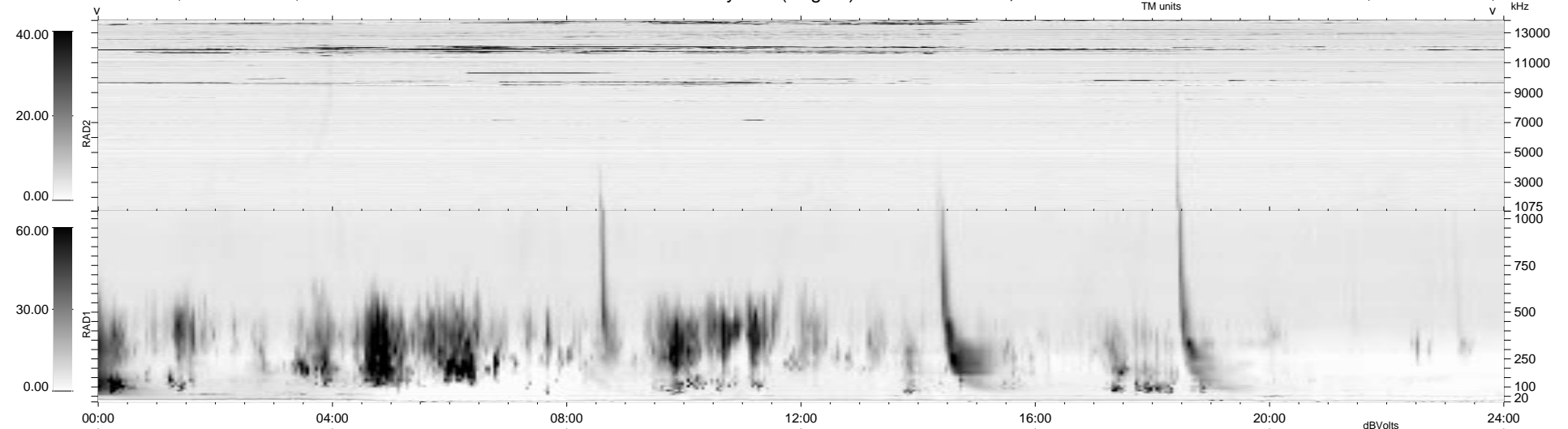


18 bad + 1860 good MF/1878MF projected (99%) - 0 missing MFs
 Avg interval = 180 secs
 Re = 81.90 (81.34, 6.84, 6.71 GSE)

1.7d VMS-SunOS LZ version = v01

WIND/WAVES Summary Plot (Page 1) for 10-NOV-1996, DOY = 315

DAILY Thu Sep 25, 2008
 Re = 73.76 (72.22, 13.51, 6.51 GSE)



```

RAD2
Antenna Ey .....
Mode LIN(1) .....
SUM/SEP SUM .....
Toggle OFF .....

RAD1
Antenna Ex .....
Mode LIS(2/4) .....
SUM/SEP SUM .....
Toggle OFF .....

TNR
Antenna ExEy .....
Mode A-32 .....
Sweep ACE .....
  
```