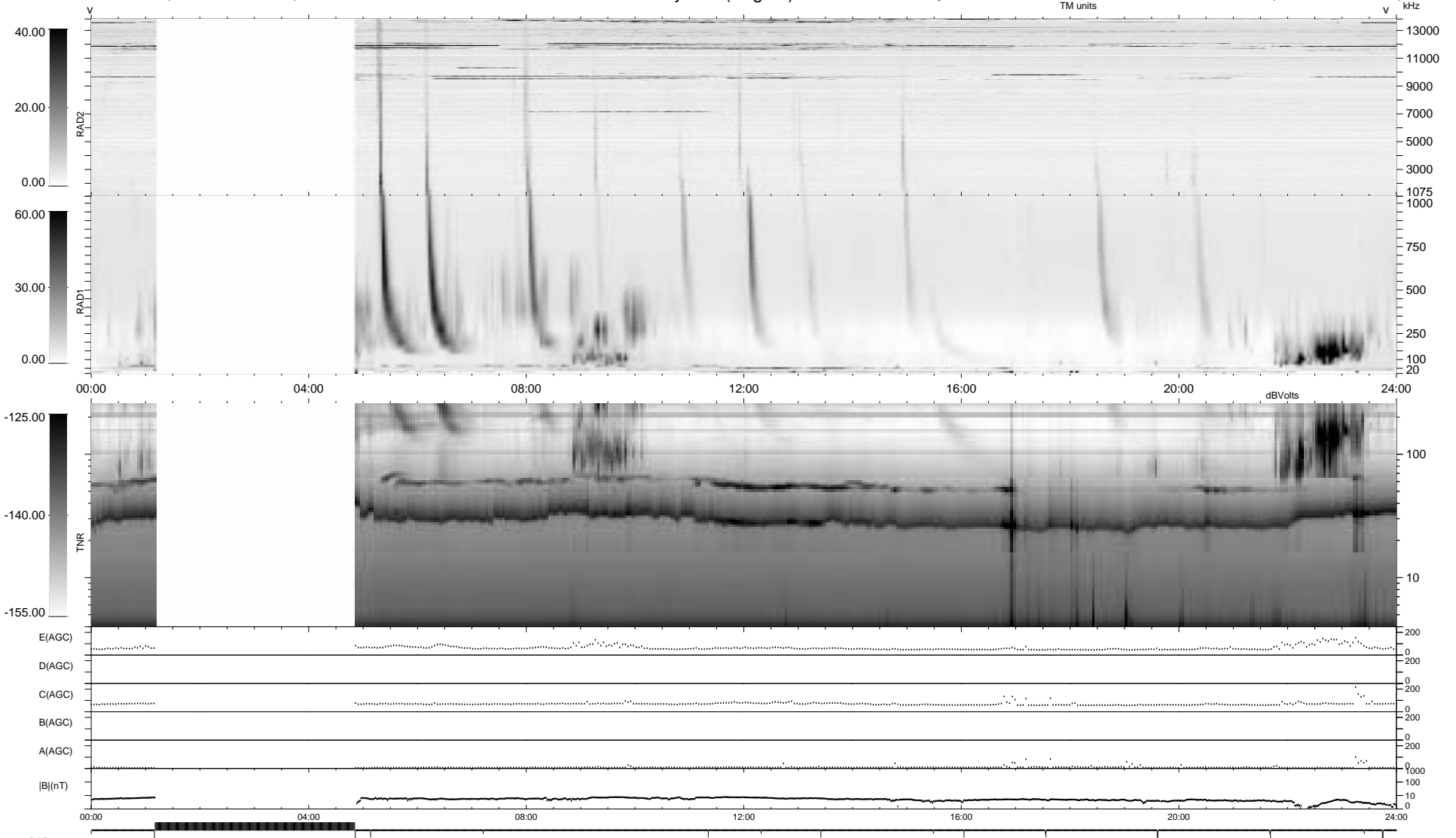


19 bad + 1572 good MF/1879MF projected (83%) - 288 missing MFs
 Avg interval = 180 secs
 Re = 107.22 (105.46, -18.31, 6.25 GSE)

1.7d VMS-SunOS LZ version = v01
 DAILY Thu Sep 25, 2008
 Re = 101.88 (100.91, -12.50, 6.50 GSE)

WIND/WAVES Summary Plot (Page 1) for 06-NOV-1996, DOY = 311



RAD2 Antenna Ey
 Mode LIN(1)
 SUM/SEP SUM
 Toggle OFF
 RAD1 Antenna Ex
 Mode LIS(0.2)
 SUM/SEP SUM
 Toggle OFF
 TNR Antenna ExEy
 Mode A-32
 Sweep ACE