

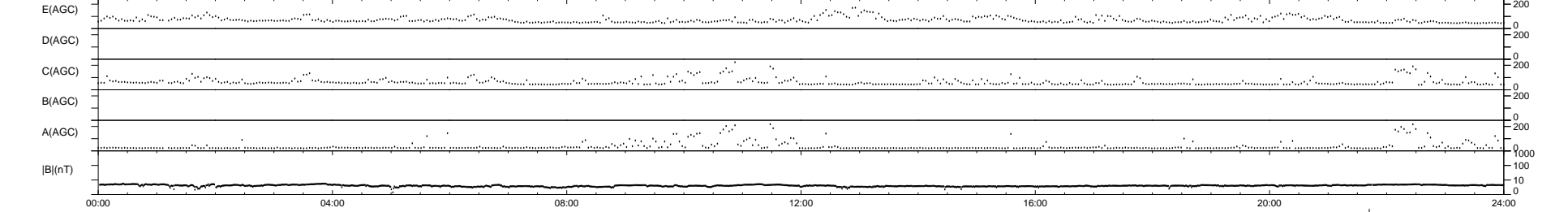
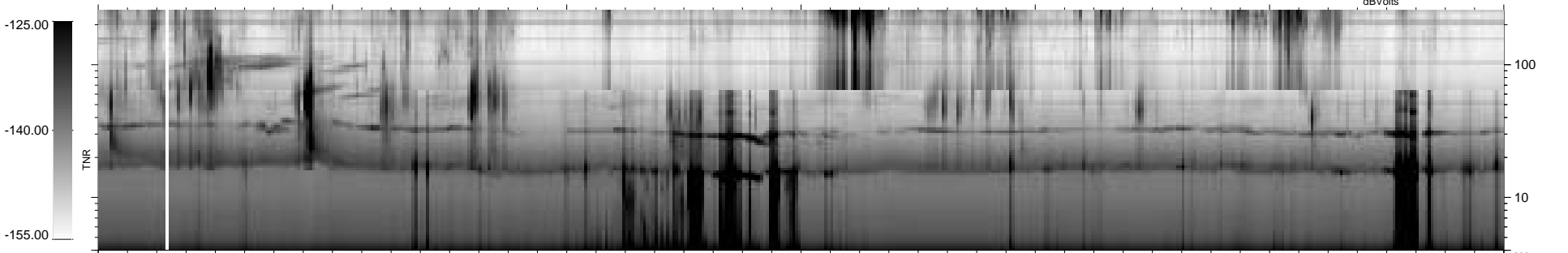
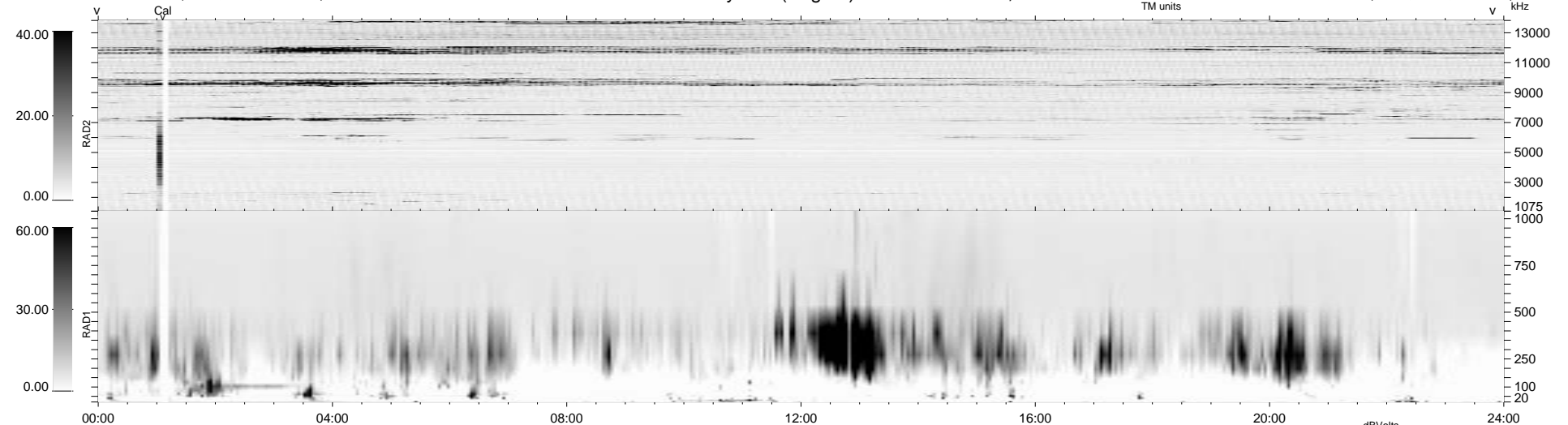
12 bad + 1865 good MF/1878MF projected (99%) - 1 missing MF
 Avg interval = 180 secs
 Re = - 131.89 (111.46, -70.48, -1.85 GSE)

1.7d VMS-SunOS

LZ version = v01

WIND/WAVES Summary Plot (Page 1) for 20-OCT-1996, DOY = 294

DAILY Thu Sep 25, 2008
 Re = 133.54 (114.06, -69.44, -1.39 GSE)



```

RAD2
Antenna Ey .....
Mode LIN(1) .....
SUM/SEP SUM .....
Toggle OFF .....

RAD1
Antenna Ex .....
Mode LIS(0.2) .....
SUM/SEP SUM .....
Toggle OFF .....

TNR
Antenna ExEy .....
Mode A-32 .....
Sweep ACE .....
  
```