

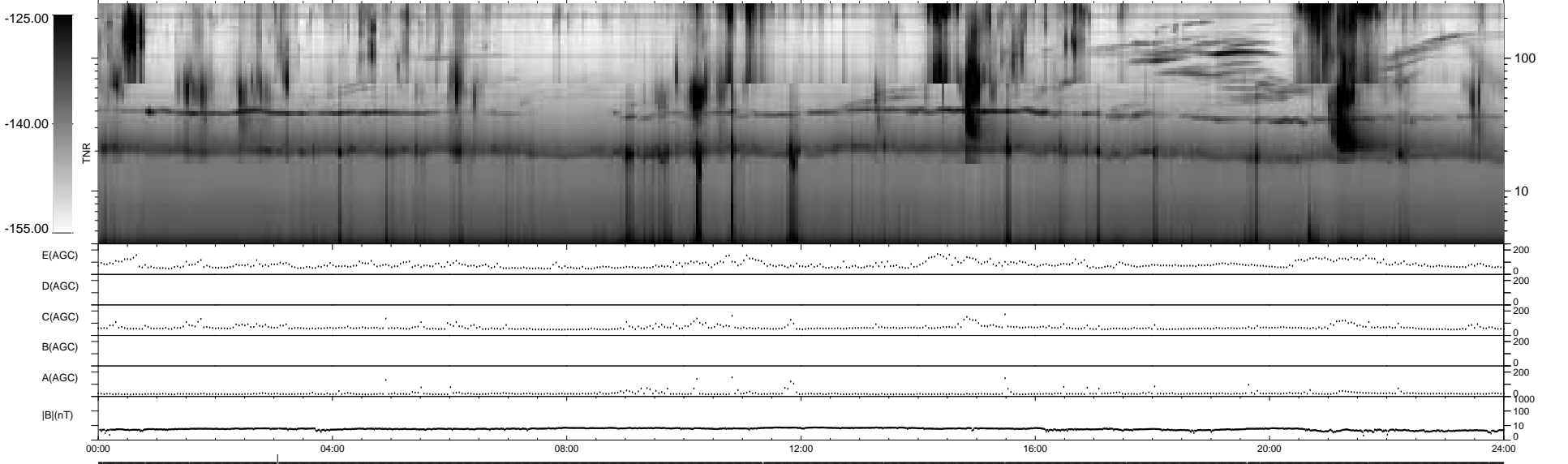
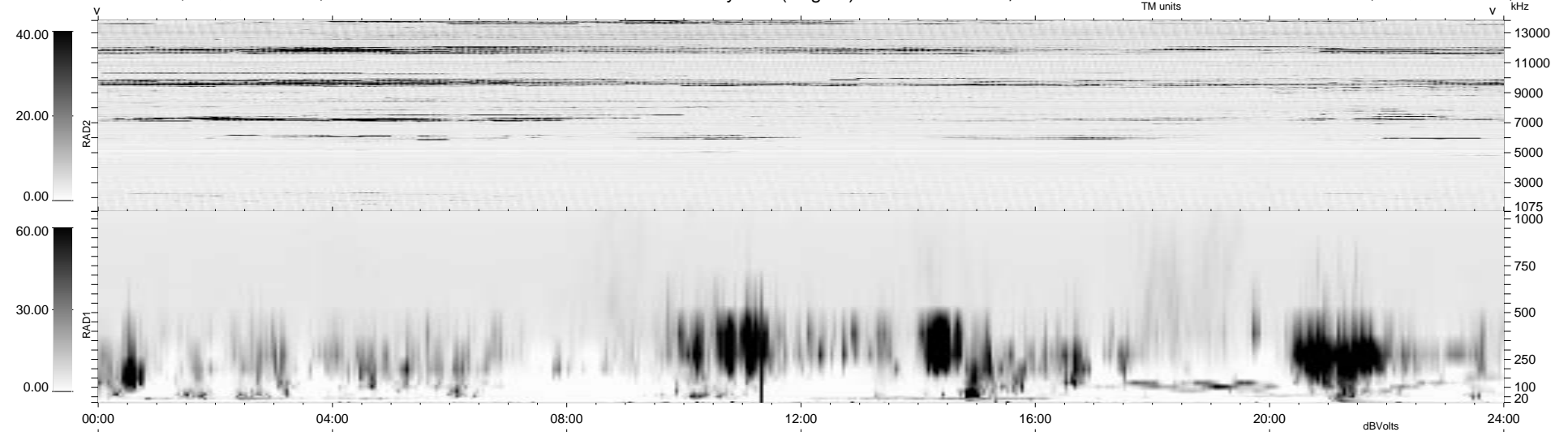
15 bad + 1862 good MF/1878MF projected (99%) - 1 missing MF
 Avg interval = 180 secs
 Re = -129.79 (108.42, -71.32, -2.31 GSE)

1.7d VMS-SunOS

LZ version = v01

WIND/WAVES Summary Plot (Page 1) for 19-OCT-1996, DOY = 293

DAILY Thu Sep 25, 2008
 Re = 131.88 (111.44, -70.49, -1.86 GSE)



RAD2
 Antenna Ey
 Mode LIN(1)
 SUM/SEP SUM
 Toggle OFF

RAD1
 Antenna Ex
 Mode LIS(0.2)
 SUM/SEP SUM
 Toggle OFF

TNR
 Antenna ExEy
 Mode A-32
 Sweep ACE