

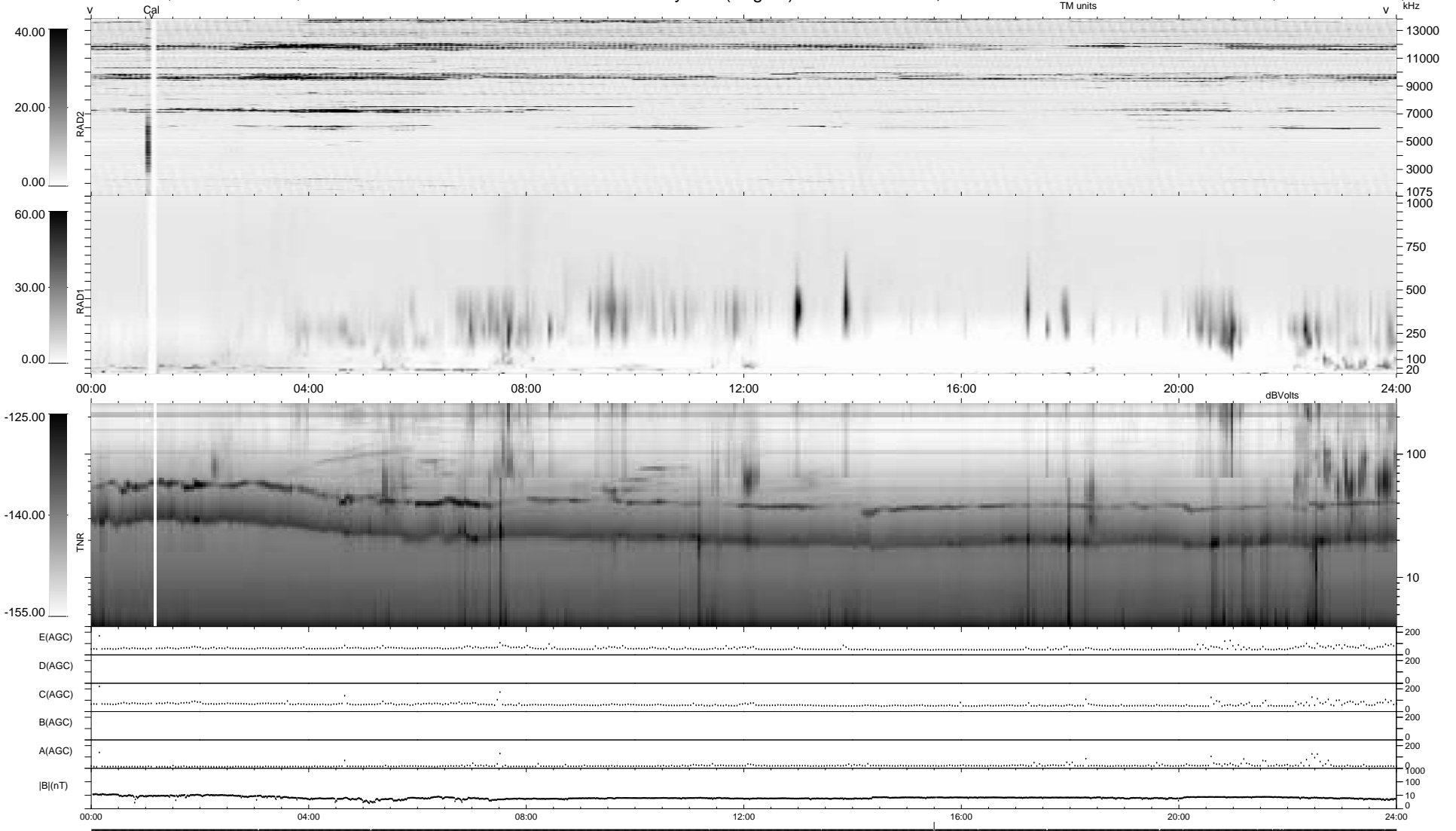
19 bad + 1858 good MF/1878MF projected (98%) - 1 missing MF
 Avg interval = 180 secs
 Re = - 127.24 (104.91, -71.93, -2.77 GSE)

1.7d VMS-SunOS

LZ version = v01

WIND/WAVES Summary Plot (Page 1) for 18-OCT-1996, DOY = 292

DAILY Thu Sep 25, 2008
 Re = 129.78 (108.39, -71.33, -2.32 GSE)



RAD2
 Antenna Ey
 Mode LIN(1)
 SUM/SEP SUM
 Toggle OFF

RAD1
 Antenna Ex
 Mode LIS(0.2)
 SUM/SEP SUM
 Toggle OFF

TNR
 Antenna ExEy
 Mode A-32
 Sweep ACE