

32 bad + 1845 good MF/1878MF projected (98%) - 1 missing MF  
 Avg interval = 180 secs  
 Re = 100.15 (71.92, -69.51, -5.02 GSE)

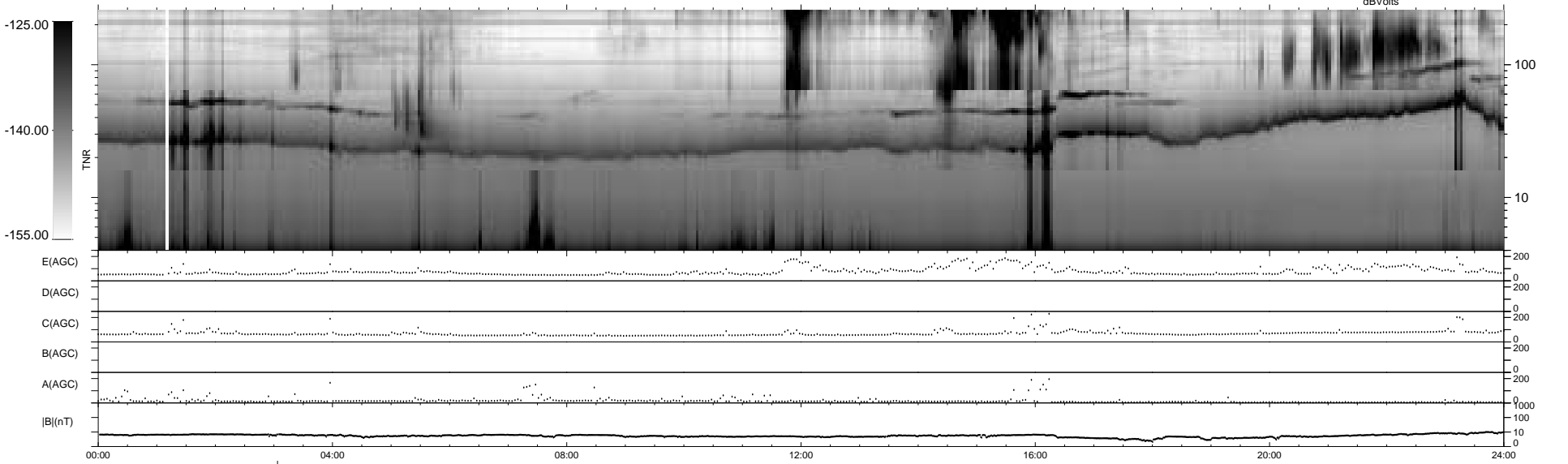
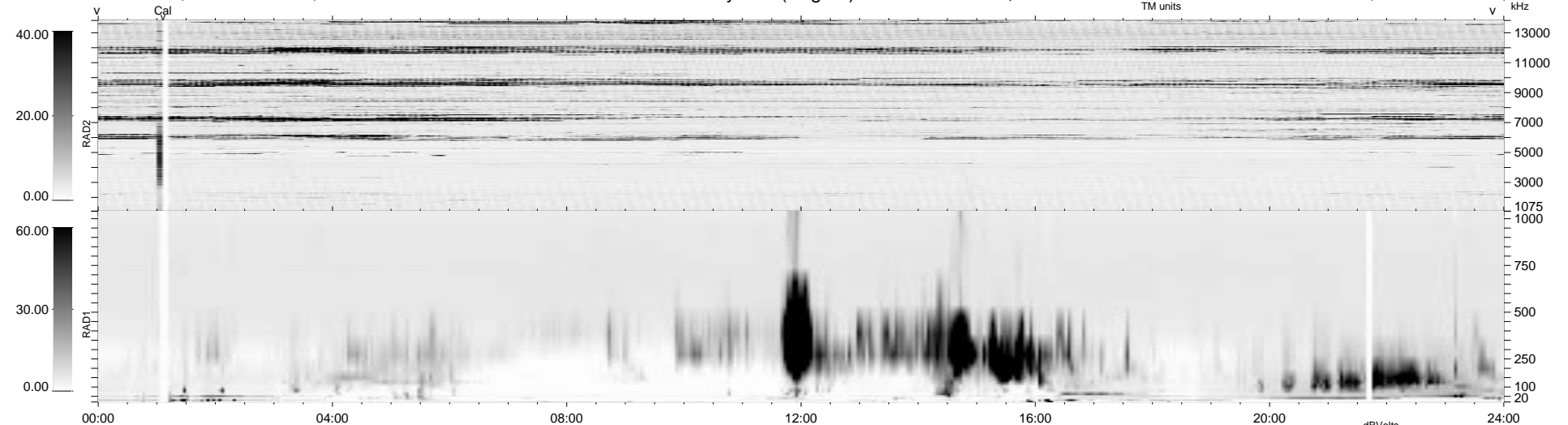
1.7d VMS-SunOS

LZ version = v01

WIND/WAVES Summary Plot (Page 1) for 12-OCT-1996, DOY = 286

DAILY Thu Sep 25, 2008

Re = 106.28 (79.07, -70.85, -4.73 GSE)



RAD2  
 Antenna Ey  
 Mode LIN(1)  
 SUM/SEP SUM  
 Toggle OFF

RAD1  
 Antenna Ex  
 Mode LIS(0.2)  
 SUM/SEP SUM  
 Toggle OFF

TNR  
 Antenna ExEy  
 Mode A-32  
 Sweep ACE