

23 bad + 1854 good MF/1878MF projected (98%) - 1 missing MF
 Avg interval = 180 secs
 Re = 65.23 (33.35, -55.82, -5.23 GSE)

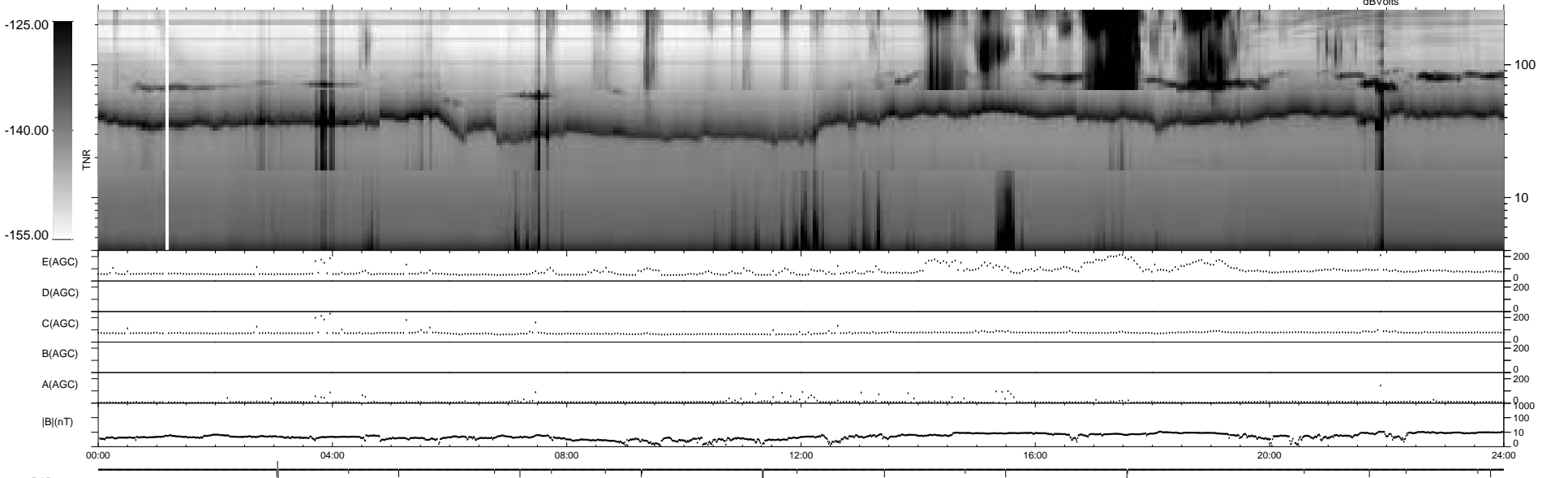
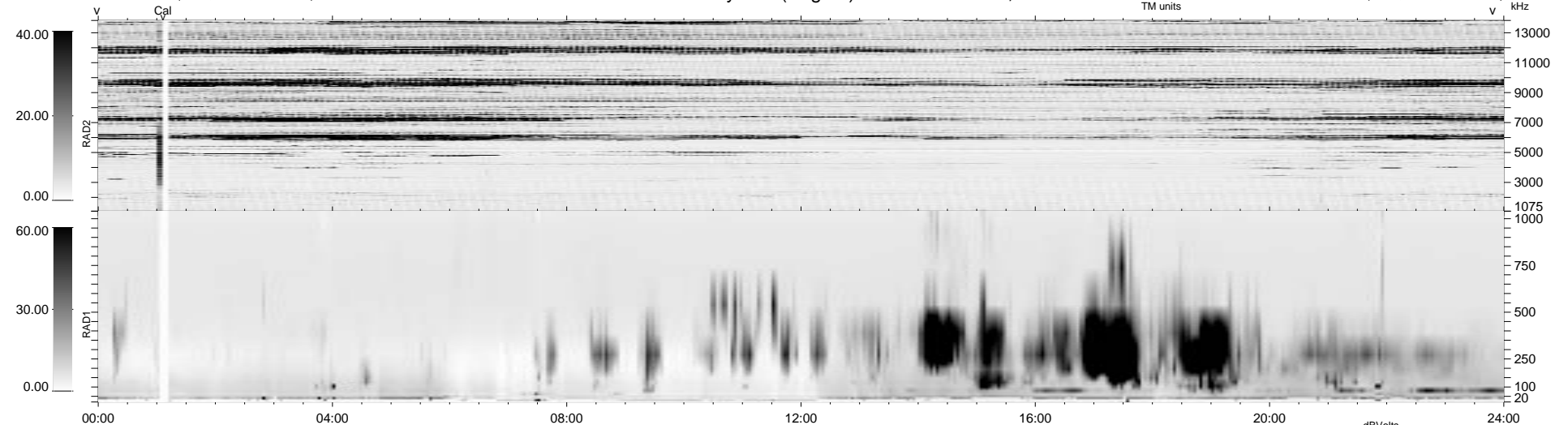
1.7d VMS-SunOS

LZ version = v01

WIND/WAVES Summary Plot (Page 1) for 08-OCT-1996, DOY = 282

DAILY Thu Sep 25, 2008

Re = 75.91 (44.62, -61.18, -5.41 GSE)



RAD2
 Antenna Ey
 Mode LIN(1)
 SUM/SEP SUM
 Toggle OFF
 RAD1
 Antenna Ex
 Mode LIS(0.2)
 SUM/SEP SUM
 Toggle OFF
 TNR
 Antenna ExEy
 Mode A-32
 Sweep ACE