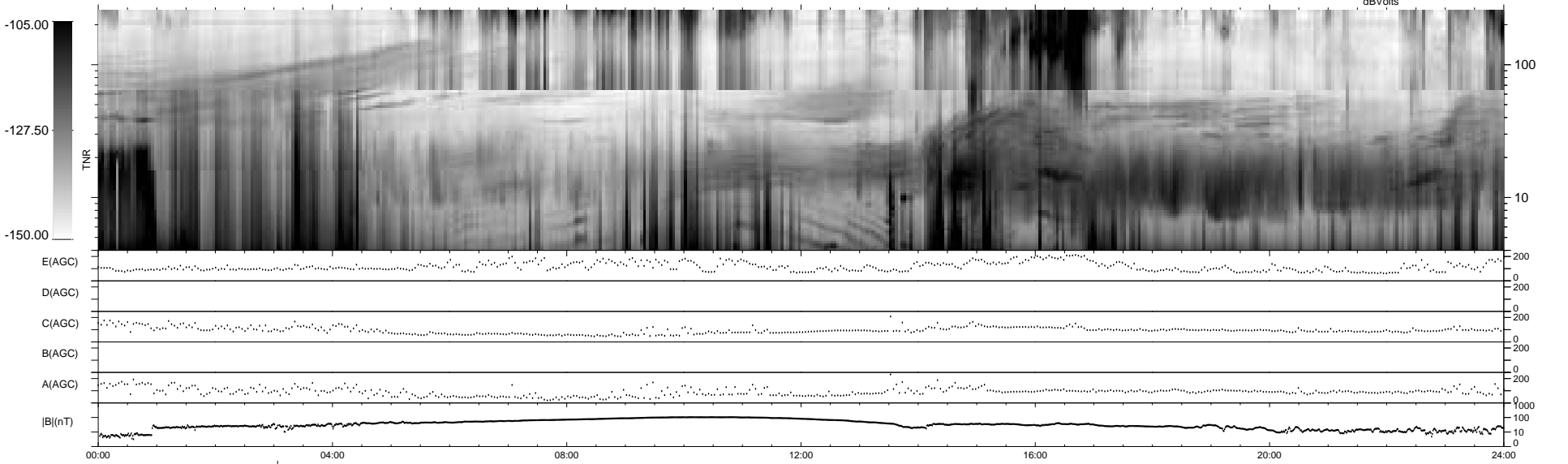
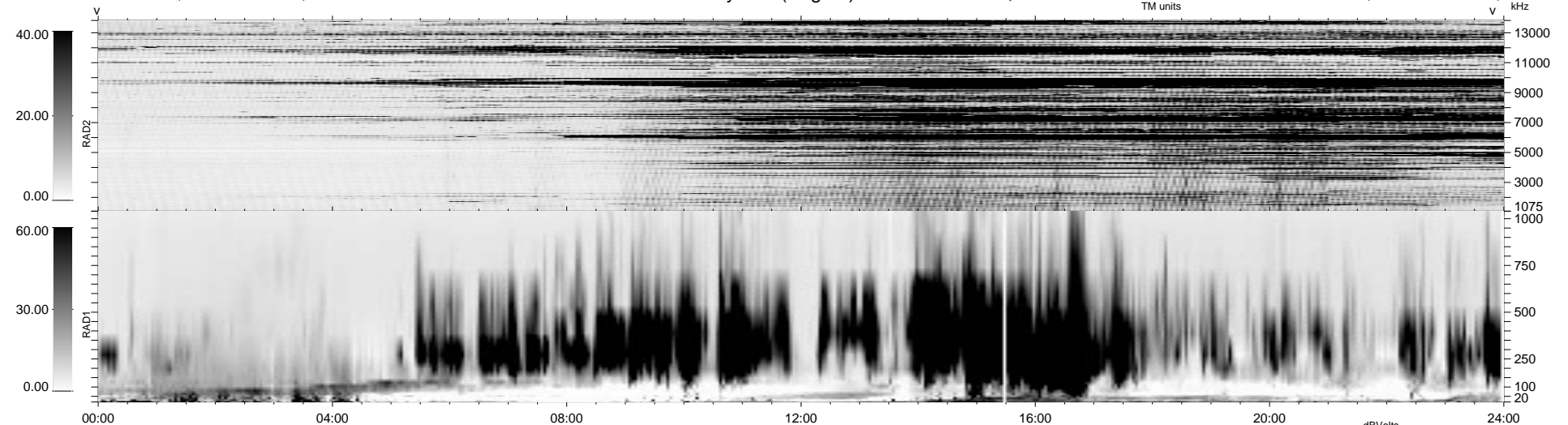


16 bad + 1861 good MF/1878MF projected (99%) - 1 missing MF  
 Avg interval = 180 secs  
 Re = 16.96 (12.44, 11.48, 1.13 GSE)

1.7d VMS-SunOS LZ version = v01

WIND/WAVES Summary Plot (Page 1) for 04-OCT-1996, DOY = 278

DAILY Thu Sep 25, 2008  
 Re = 17.95 (-5.00, -17.15, -1.71 GSE)



```

RAD2
Antenna Ey .....
Mode LIN(1) .....
SUM/SEP SUM .....
Toggle OFF .....

RAD1
Antenna Ex .....
Mode LIS(0.2) .....
SUM/SEP SUM .....
Toggle OFF .....

TNR
Antenna ExEy .....
Mode A-32 .....
Sweep ACE .....
  
```