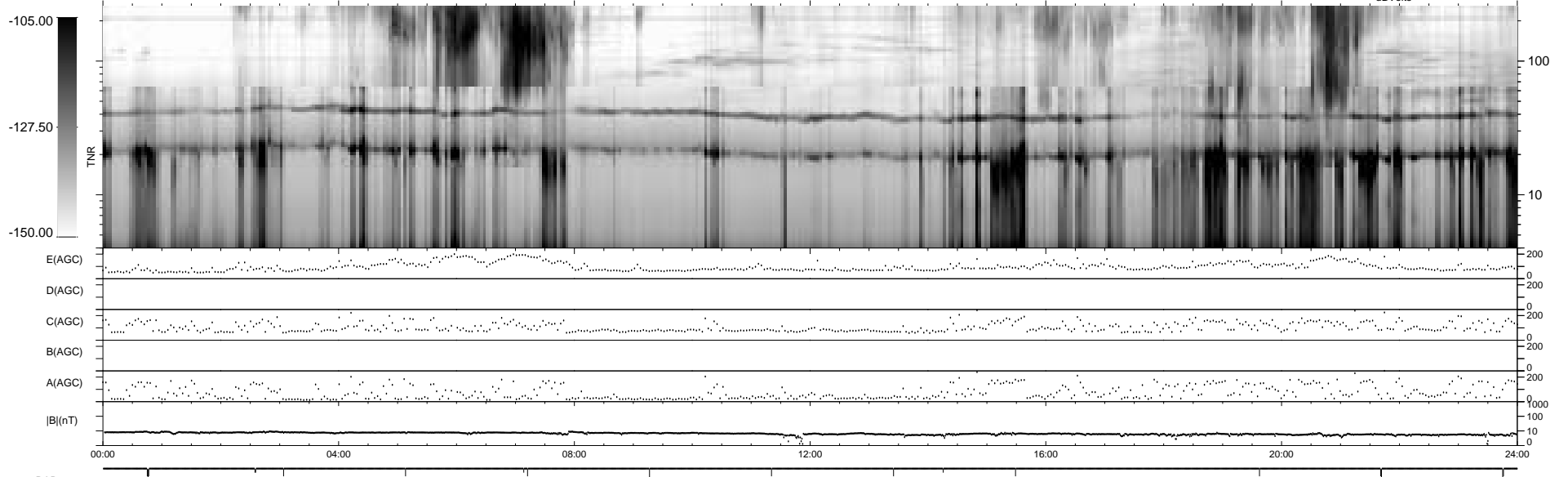
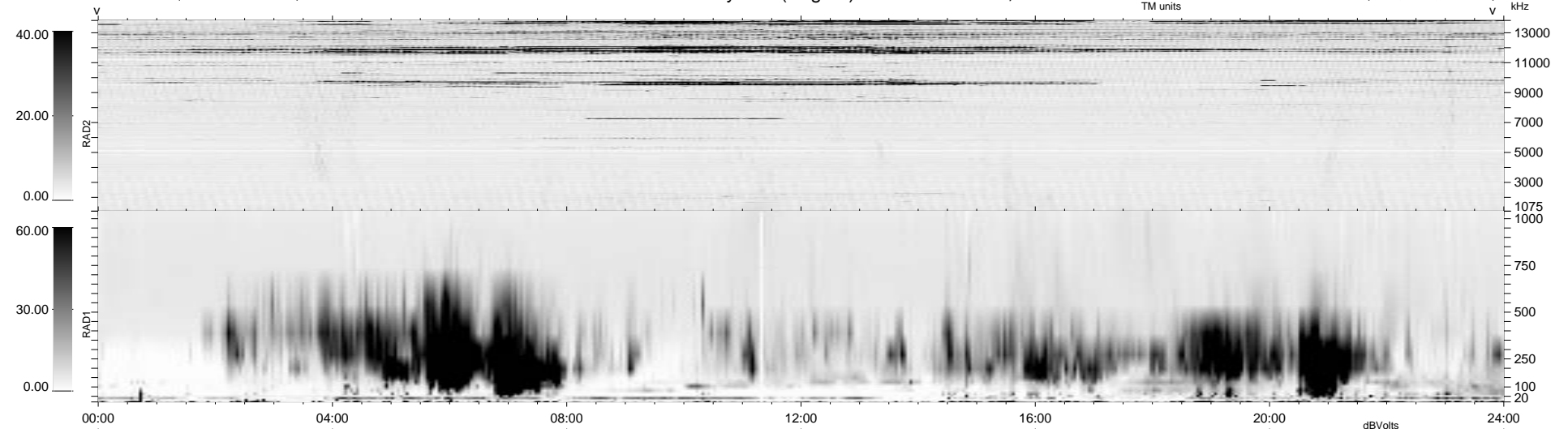


19 bad + 1859 good MF/1878MF projected (98%) - 0 missing MFs
 Avg interval = 180 secs
 Re = 37.19 (36.62, 6.45, 0.54 GSE)

1.7d VMS-SunOS LZ version = v01

WIND/WAVES Summary Plot (Page 1) for 03-OCT-1996, DOY = 277

DAILY Thu Sep 25, 2008
 Re = 17.13 (12.67, 11.47, 1.13 GSE)



RAD2
 Antenna Ey
 Mode LIN(1)
 SUM/SEP SUM
 Toggle OFF

RAD1
 Antenna Ex
 Mode LIS(0.2)
 SUM/SEP SUM
 Toggle OFF

TNR
 Antenna ExEy
 Mode A-32
 Sweep ACE