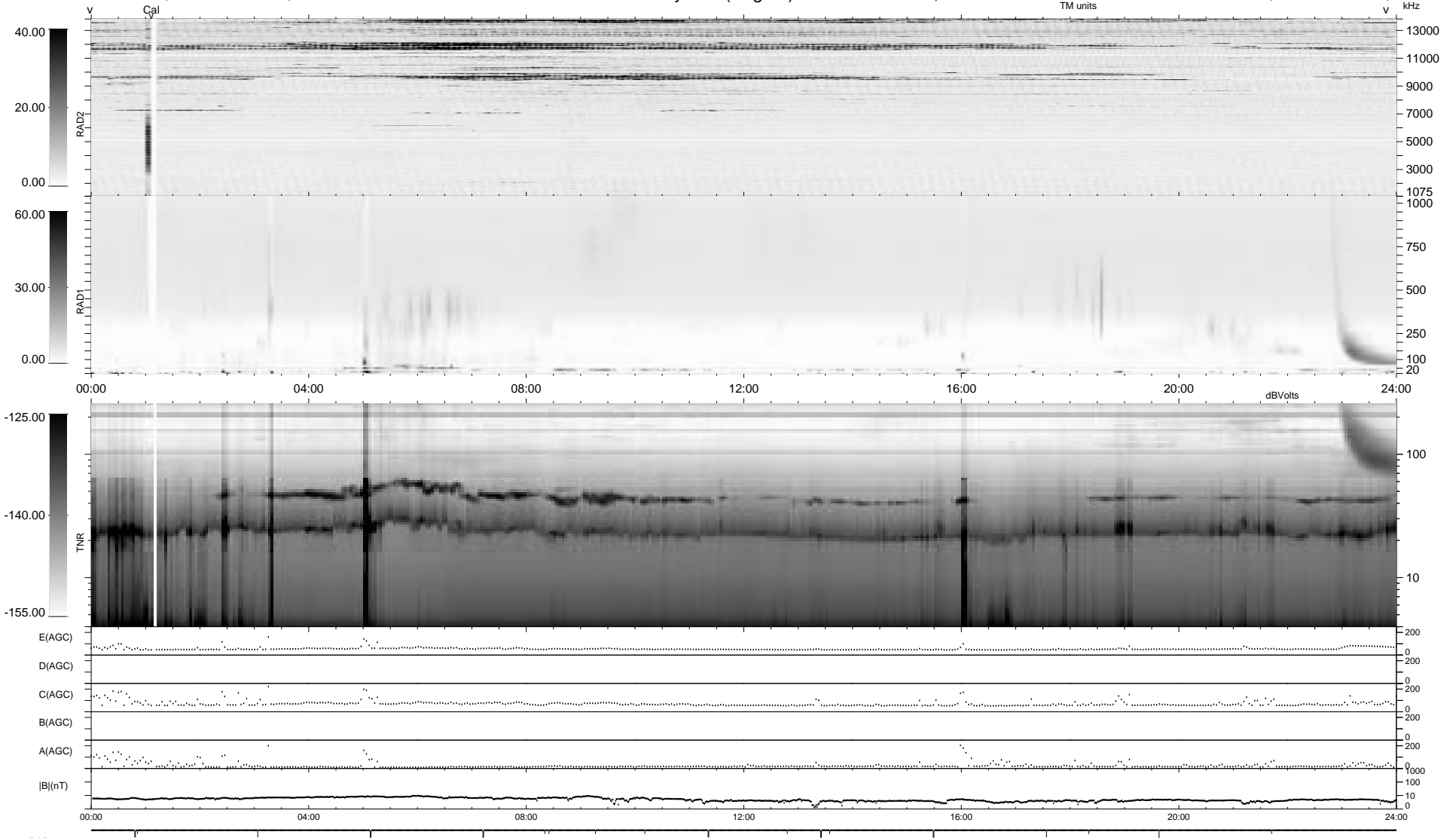


24 bad + 1854 good MF/1878MF projected (98%) - 0 missing MFs
 Avg interval = 180 secs
 Re = - 72.29 (71.18, -12.49, -1.79 GSE)

1.7d VMS-SunOS LZ version = v01

WIND/WAVES Summary Plot (Page 1) for 30-SEP-1996, DOY = 274

DAILY Thu Sep 25, 2008
 Re = 63.25 (62.87, -6.79, -1.06 GSE)



```

RAD2
Antenna Ey
Mode LIN(1)
SUM/SEP SUM
Toggle OFF

RAD1
Antenna Ex
Mode LIS(0.2)
SUM/SEP SUM
Toggle OFF

TNR
Antenna ExEy
Mode A-32
Sweep ACE
  
```