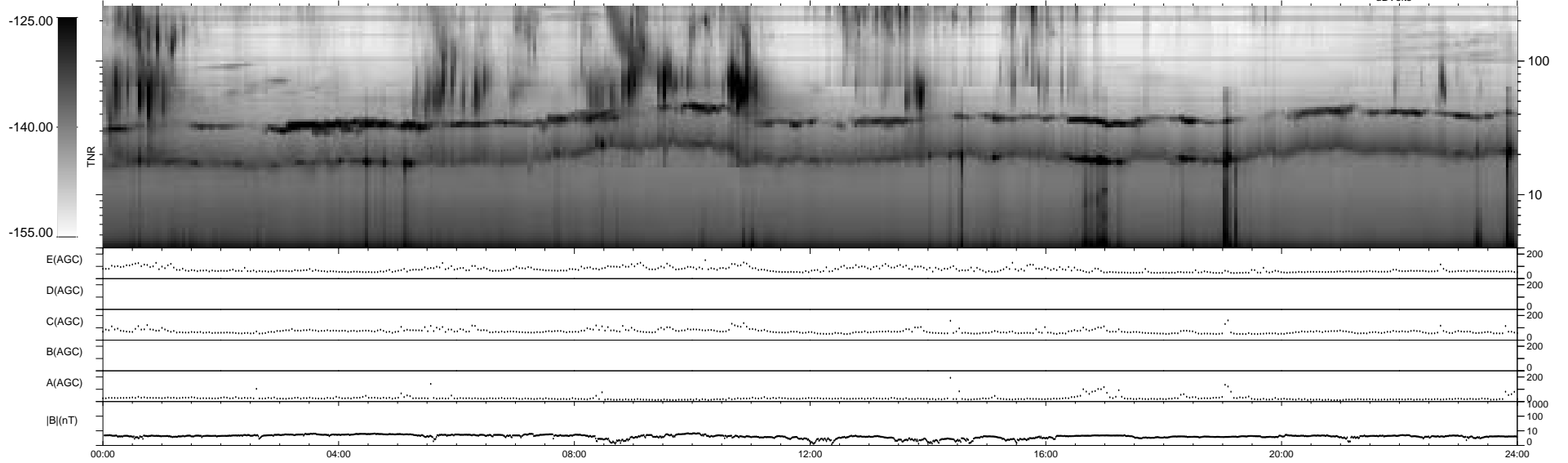
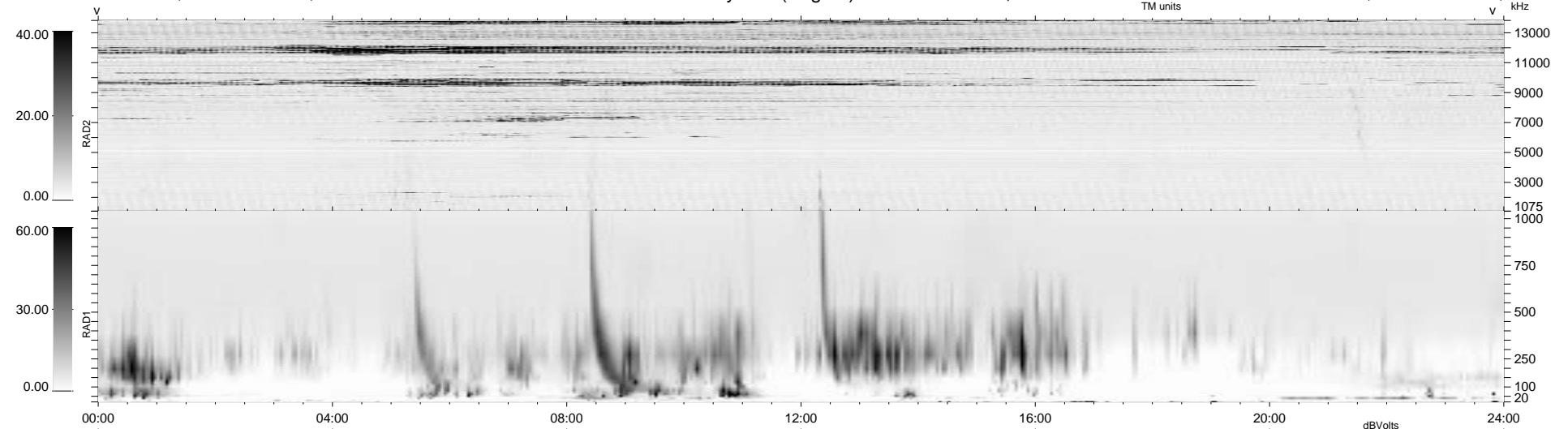


18 bad + 1860 good MF/1878MF projected (99%) - 0 missing MFs
 Avg interval = 180 secs
 Re = - 90.16 (86.24, -26.01, -3.66 GSE)

1.7d VMS-SunOS LZ version = v01
 DAILY Thu Sep 25, 2008
 Re = 85.57 (82.60, -22.11, -3.10 GSE)

WIND/WAVES Summary Plot (Page 1) for 27-SEP-1996, DOY = 271



```

RAD2
Antenna Ey .....
Mode LIN(1) .....
SUM/SEP SUM .....
Toggle OFF .....

RAD1
Antenna Ex .....
Mode LIS(0.2) .....
SUM/SEP SUM .....
Toggle OFF .....

TNR
Antenna ExEy .....
Mode A-32 .....
Sweep ACE .....
  
```