

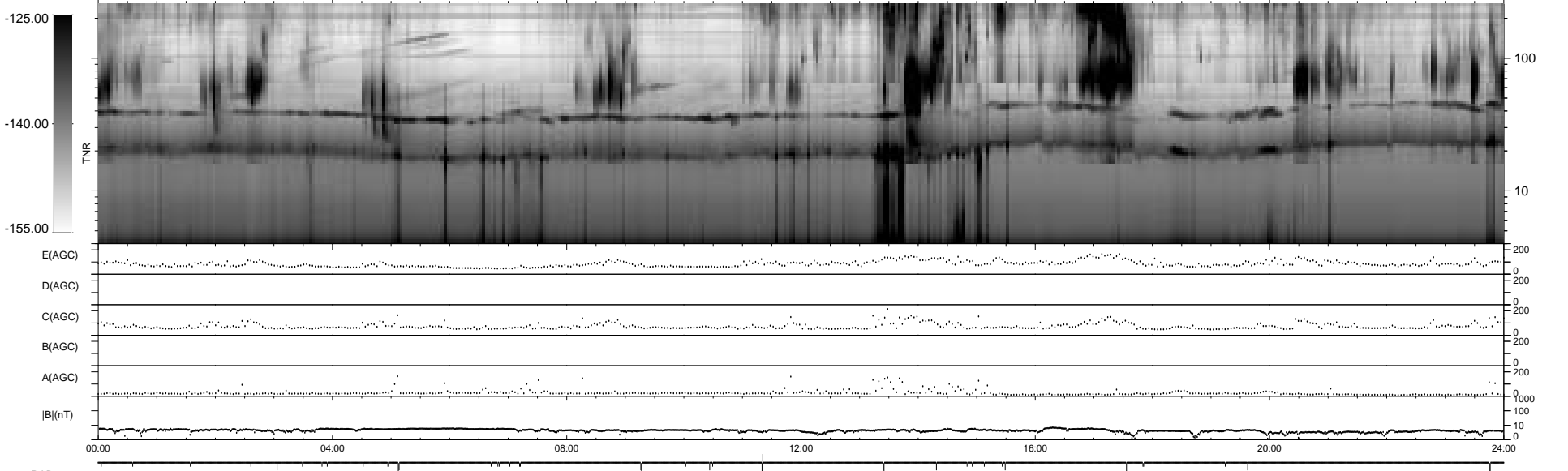
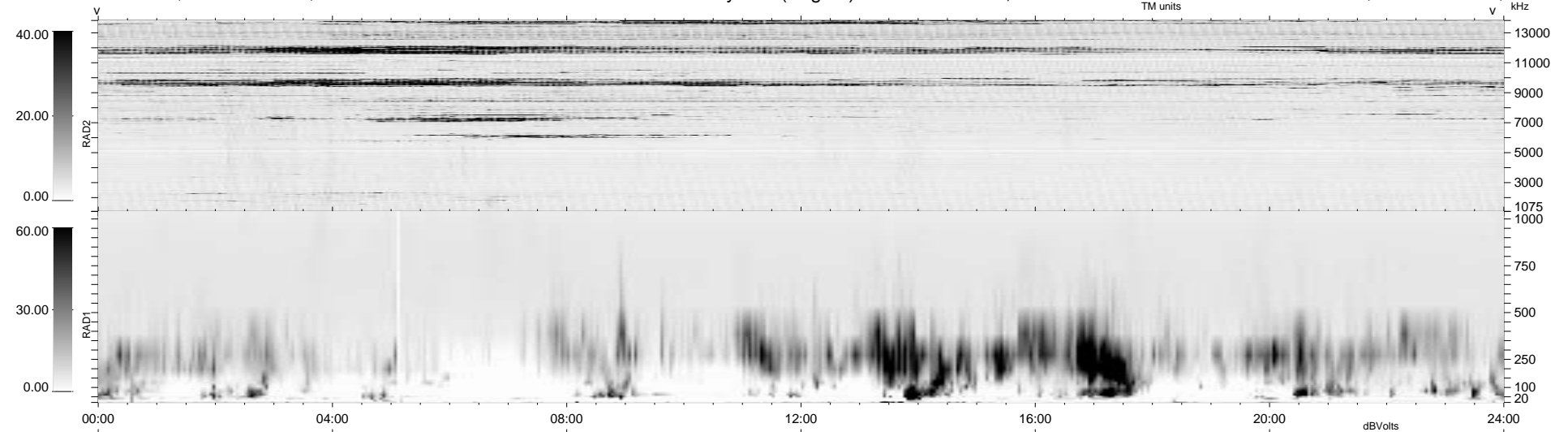
39 bad + 1839 good MF/1879MF projected (97%) - 1 missing MF  
 Avg interval = 180 secs  
 Re = 95.87 (86.92, -40.02, -5.80 GSE)

1.7d VMS-SunOS

LZ version = v01

### WIND/WAVES Summary Plot (Page 1) for 21-SEP-1996, DOY = 265

DAILY Thu Sep 25, 2008  
 Re = 97.39 (89.20, -38.70, -5.61 GSE)



```

RAD2
Antenna Ey .....
Mode LIN(1) .....
SUM/SEP SUM .....
Toggle OFF .....

RAD1
Antenna Ex .....
Mode LIS(0.2) .....
SUM/SEP SUM .....
Toggle OFF .....

TNR
Antenna ExEy .....
Mode A-32 .....
Sweep ACE .....
  
```