

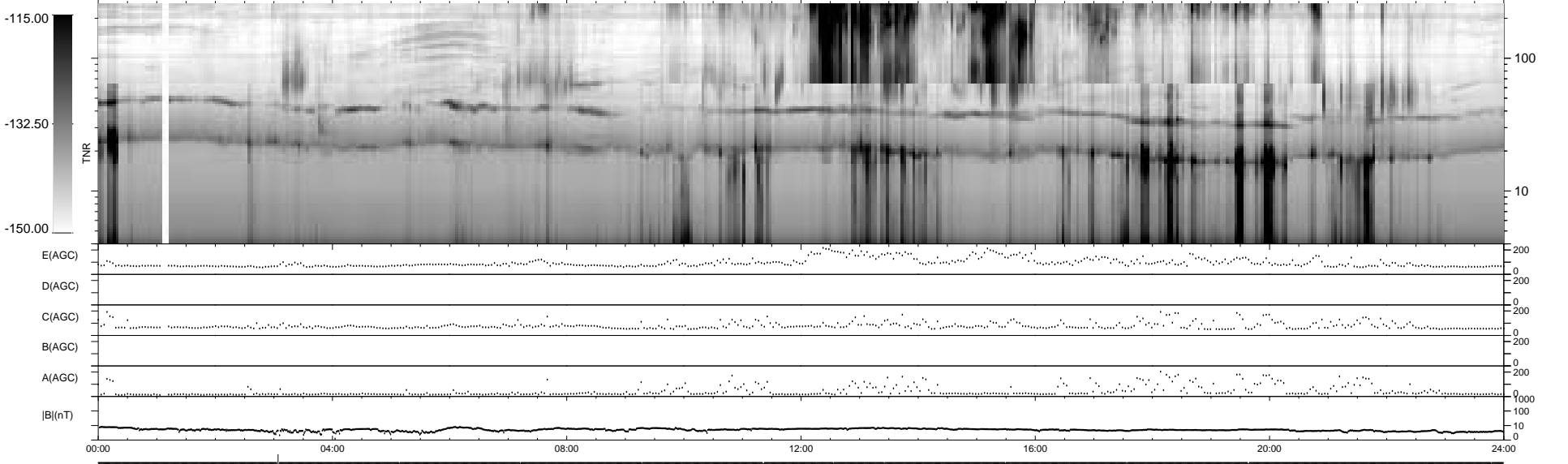
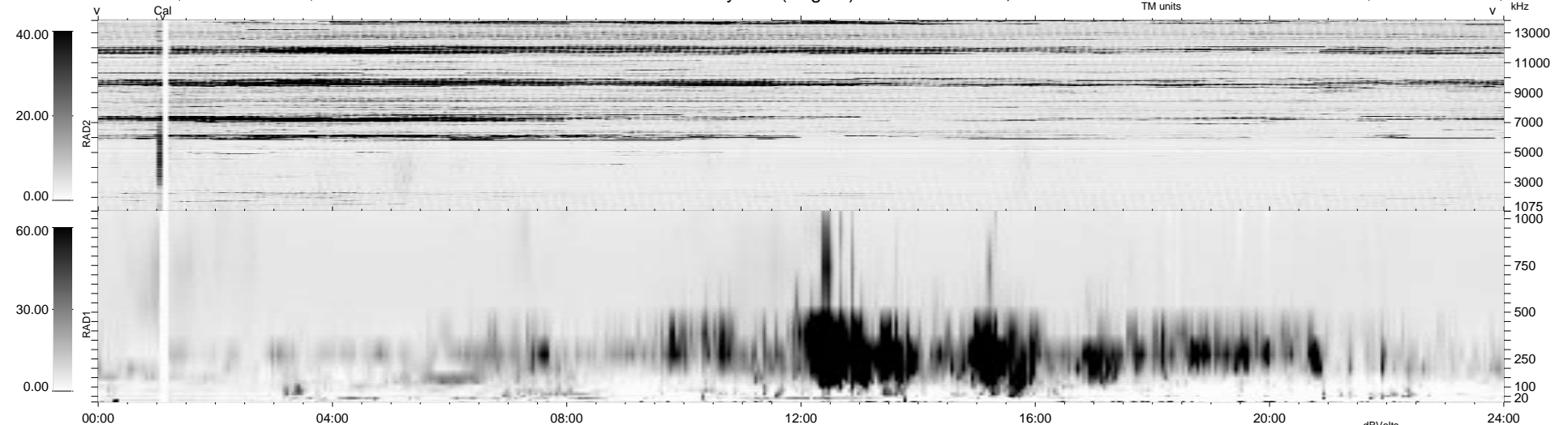
14 bad + 1863 good MF/1878MF projected (99%) - 1 missing MF  
 Avg interval = 180 secs  
 Re = 70.61 (58.06, -39.82, -5.44 GSE)

1.7d VMS-SunOS

LZ version = v01

WIND/WAVES Summary Plot (Page 1) for 16-SEP-1996, DOY = 260

DAILY Wed Sep 24, 2008  
 Re = 78.41 (66.57, -41.03, -5.74 GSE)



RAD2  
 Antenna Ey .....  
 Mode LIN(1) .....  
 SUM/SEP SUM .....  
 Toggle OFF .....  
 RAD1  
 Antenna Ex .....  
 Mode LIS(0.2) .....  
 SUM/SEP SUM .....  
 Toggle OFF .....  
 TNR  
 Antenna ExEy .....  
 Mode A-32 .....  
 Sweep ACE .....