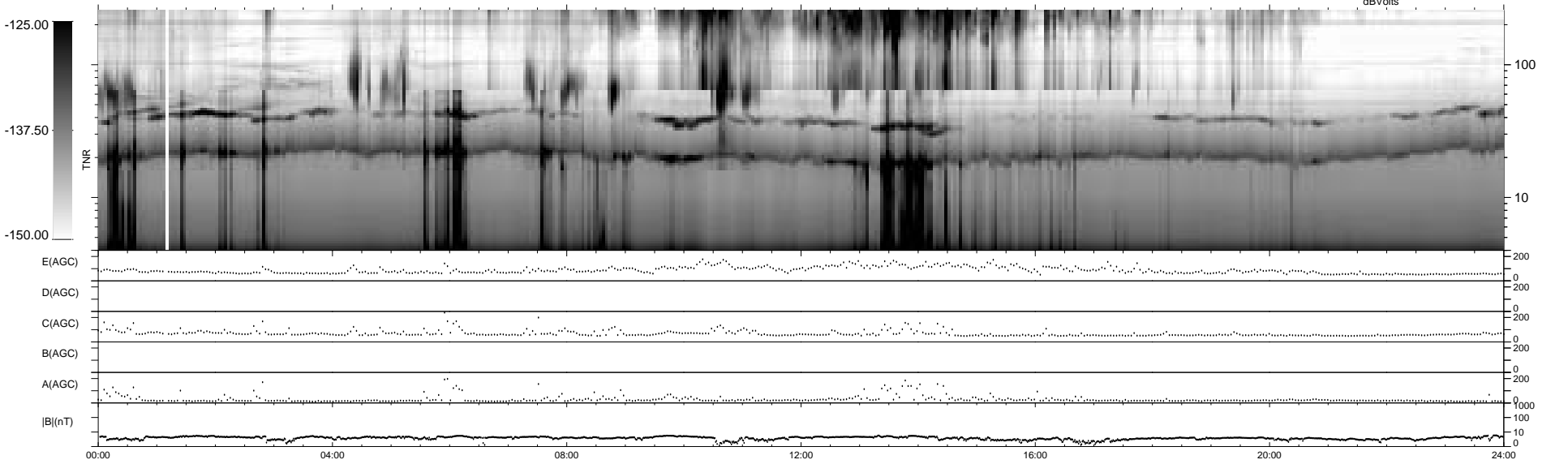
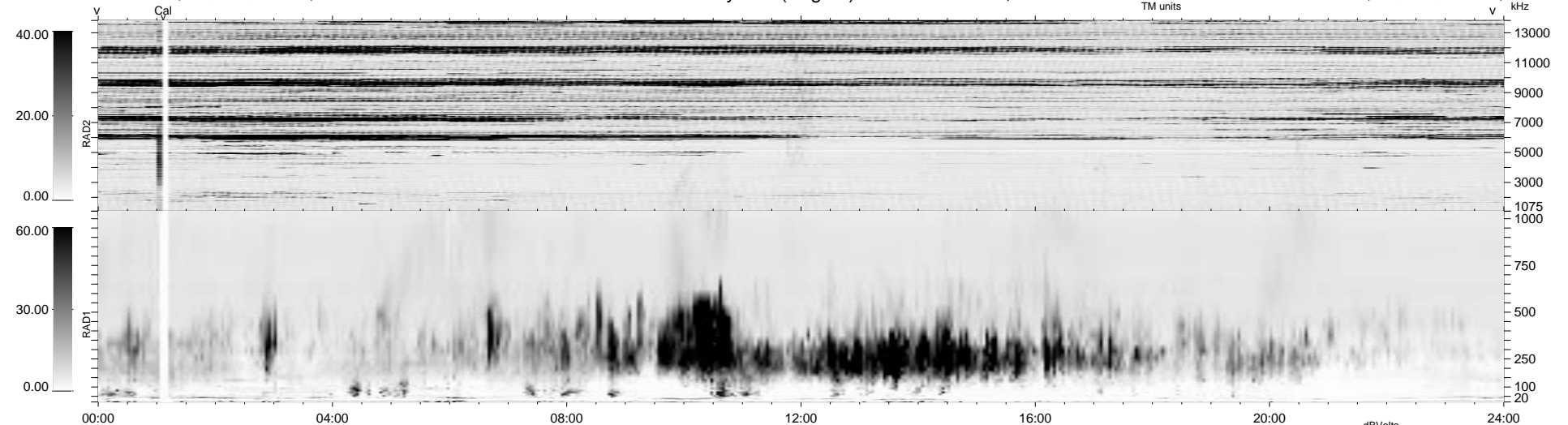


20 bad + 1858 good MF/1878MF projected (98%) - 0 missing MFs
 Avg interval = 180 secs
 Re = - 48.46 (34.47, -33.80, -4.19 GSE)

1.7d VMS-SunOS LZ version = v01
 DAILY Wed Sep 24, 2008
 Re = 60.75 (47.46, -37.59, -4.94 GSE)

WIND/WAVES Summary Plot (Page 1) for 14-SEP-1996, DOY = 258



```

RAD2
Antenna Ey .....
Mode LIN(1) .....
SUM/SEP SUM .....
Toggle OFF .....

RAD1
Antenna Ex .....
Mode LIS(2,4) .....
SUM/SEP SUM .....
Toggle OFF .....

TNR
Antenna ExEy .....
Mode A-32 .....
Sweep ACE .....
  
```