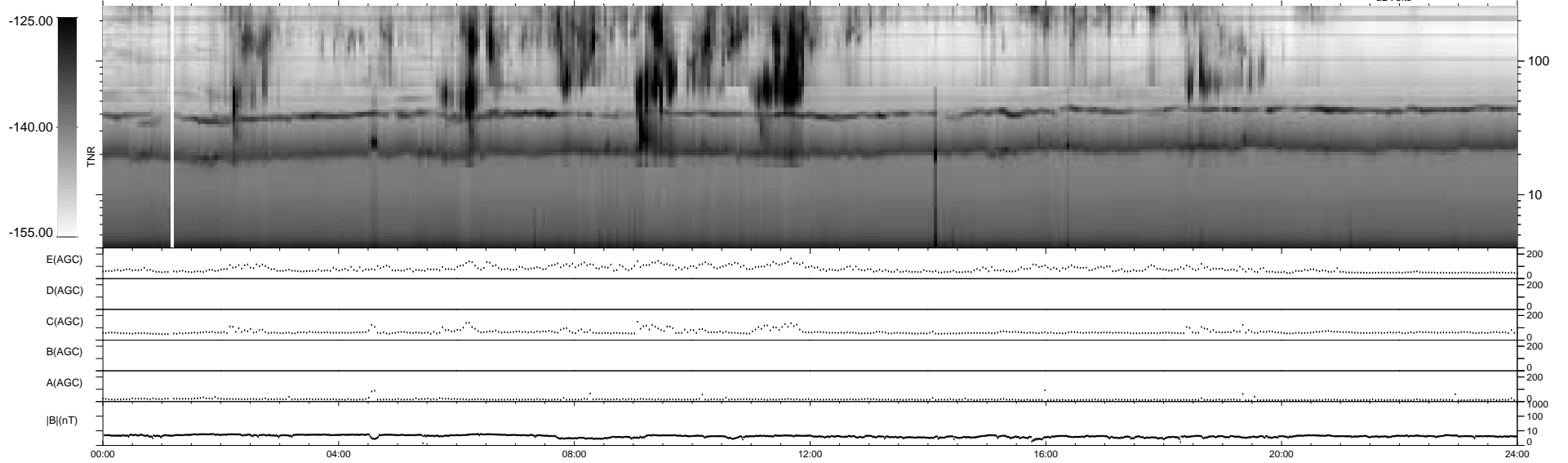
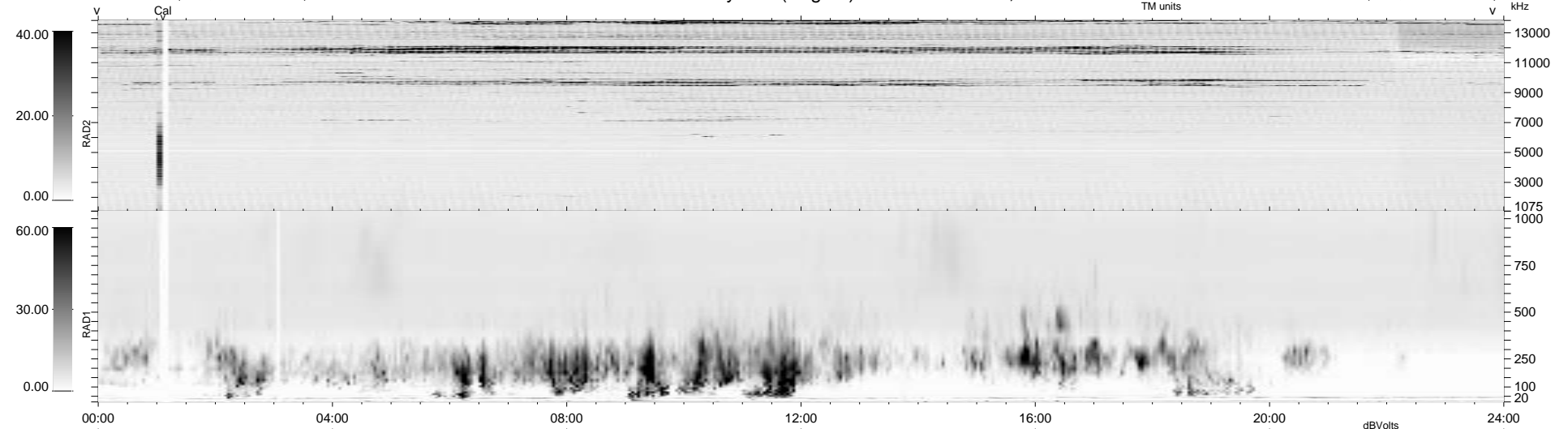


26 bad + 1852 good MF/1878MF projected (98%) - 0 missing MFs
 Avg interval = 180 secs
 Re = 98.92 (98.67, -4.16, -5.64 GSE)

1.7d VMS-SunOS LZ version = v01

WIND/WAVES Summary Plot (Page 1) for 31-AUG-1996, DOY = 244

DAILY Wed Sep 24, 2008
 Re = 98.88 (98.70, -2.31, -5.41 GSE)



```

RAD2
Antenna Ey .....
Mode LIN(1) .....
SUM/SEP SUM .....
Toggle OFF .....

RAD1
Antenna Ex .....
Mode LIS(2/4) .....
SUM/SEP SUM .....
Toggle OFF .....

TNR
Antenna ExEy .....
Mode A-32 .....
Sweep ACE .....
  
```